

FOR LEASE

Meridian Ave S & 39th Ave S
Puyallup, WA 98373



SOUTH HILL PLAZA

First Western Properties—Tacoma Inc. | 253.472.0404
6402 Tacoma Mall Blvd, Tacoma, WA 98409 | fwp-inc.com

SOUTH HILL PLAZA is located just off of Highway 512 in Puyallup, WA. The property is situated on the busy corner of Meridian & 112th Street at the south end of the South Hill Mall. Puyallup is home of the Washington State Fair grounds (moments away) and boasts a large population density which makes South Hill Plaza a great site for any Tenant, large or small.

3860 S MERIDIAN:

4,096 SF	\$22.00 PSF	PLUS NNN
2,006 SF	\$38.00 PSF	PLUS NNN
4,080 SF	\$38.00 PSF	PLUS NNN
6,086 SF	\$38.00 PSF	PLUS NNN

- Pylon Signage Available
- Pad space can be combined



NEARBY TENANTS



SITE PLAN



SF	Tenant
Leased	Baskin Robbins
Leased	Jenny Craig
Leased	US Healthworks
Leased	Sapporo
Leased	Dental

SF	Tenant
4,096	AVAILABLE
Leased	Laundromat
Leased	US Healthworks
2,006	AVAILABLE
4,080	AVAILABLE

LOCATION AERIAL

SOUTH HILL MALL



OLD NAVY



TARGET



in the box



JCPenney

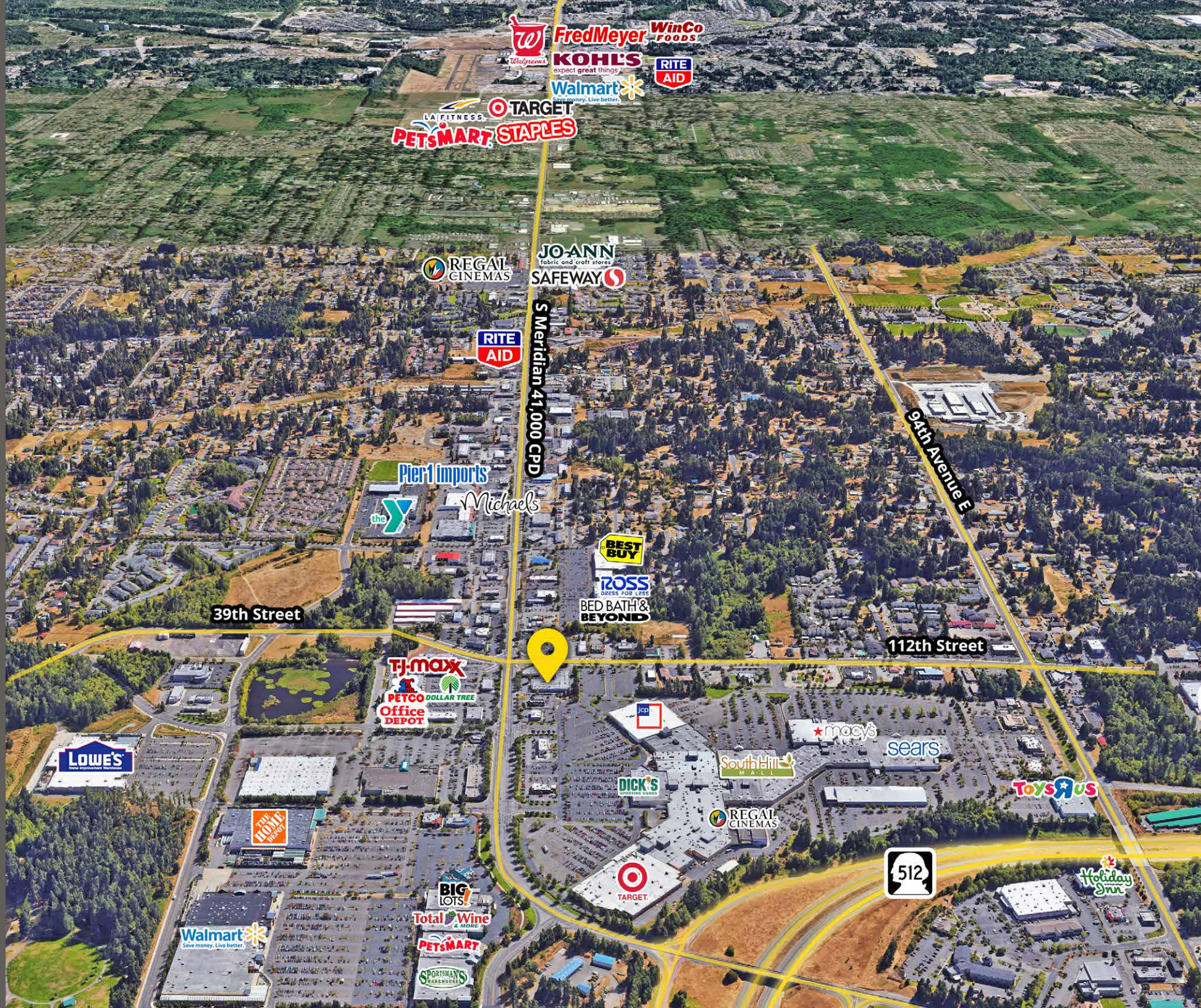


MERIDIAN AVENUE

LOCATION AERIAL



LOCATION AERIAL



Fred Meyer WinCo FOODS
KOHLS expect great things
Walmart community. Live better.
RITE AID

LA FITNESS
TARGET
PETS MART STAPLES

REGAL CINEMAS
JO-ANN fabric and craft stores
SAFeway

RITE AID

Pier 1 imports
the Y
Michaels

S Meridian 41,000 CPD

BEST BUY
ROSS DRESS FOR LESS
BED BATH & BEYOND

39th Street

112th Street

94th Avenue E

TJ-maxx
PETCO
DOLLAR TREE
Office DEPOT

LOWE'S

THE HOME DEPOT

JCPenney

macy's

sears

South Hill MALL

Toys R US

DICK'S SPORTING GOODS

REGAL CINEMAS

TARGET

512

Holiday Inn

BIG LOTS!

Total Wine & MORE

PETS MART

SPORTSMAN'S BARBERSHOP

Walmart Save money. Live better.

DEMOGRAPHICS

POPULATION

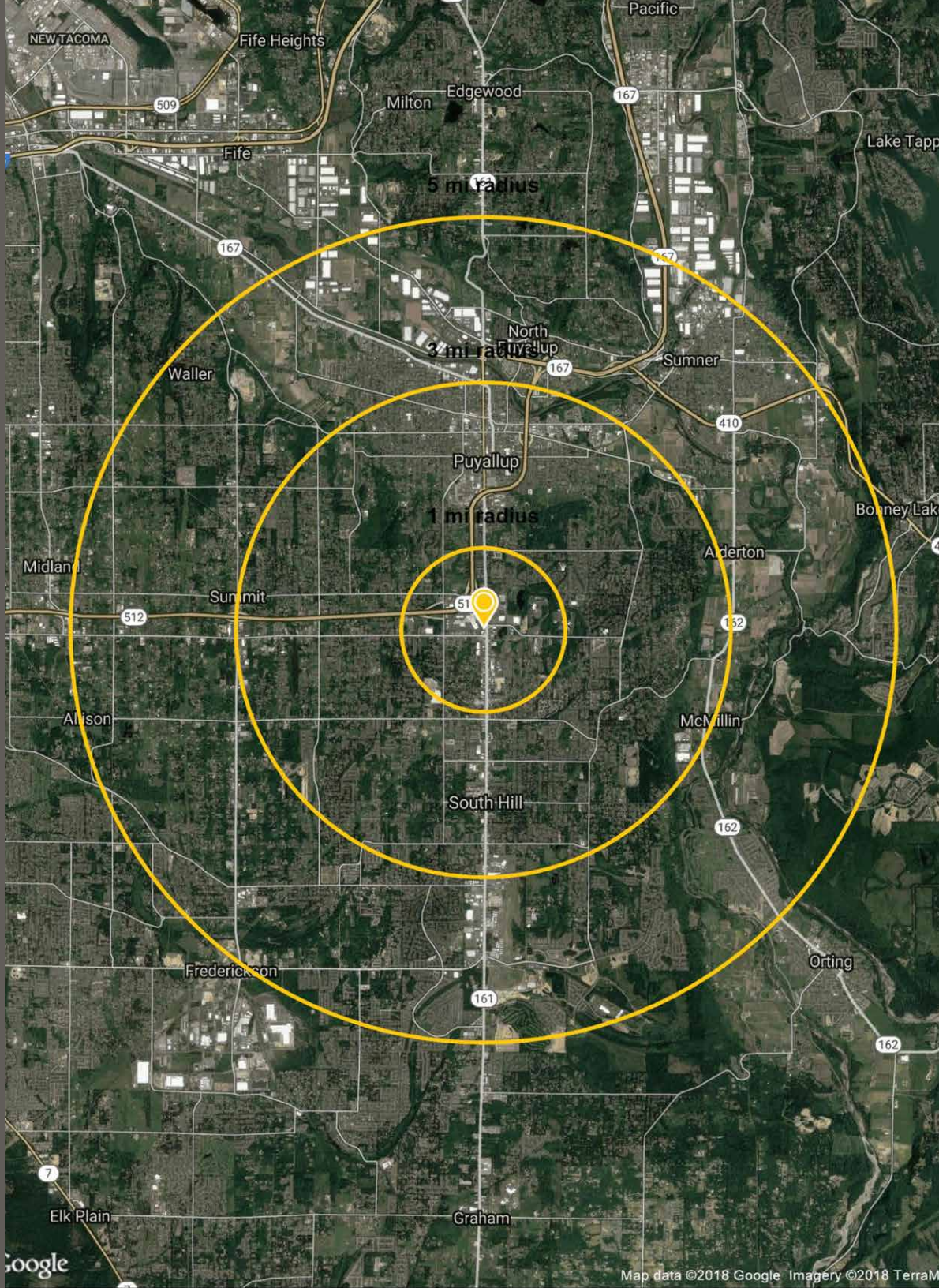
Mile 1	Mile 2	Mile 3
9,309	84,908	169,713

AVERAGE HH INCOME

Mile 1	Mile 2	Mile 3
\$83,008	\$95,093	\$95,072

DAYTIME POPULATION

Mile 1	Mile 2	Mile 3
12,963	57,704	104,343



SUMMARY



TACOMA | KIRKLAND | PORTLAND



RETAIL FOCUSED. RESULTS DRIVEN.

TIM WEBER

253.471.5502
tweber@firstwesternproperties.com

BLAKE WEBER

253.284.3646
bweber@firstwesternproperties.com

JEREMIAH DURR

253.471.5506
jdurr@firstwesternproperties.com

DON WHITTLES

253.471.5509
dwhittles@firstwesternproperties.com



First Western Properties—Tacoma Inc. | 253.472.0404
6402 Tacoma Mall Blvd, Tacoma, WA 98409 | fwp-inc.com

© First Western Properties, Inc. DISCLAIMER: The above information has been secured from sources believed to be reliable, however, no representations are made to its accuracy. Prospective tenants or buyers should consult their professional advisors and conduct their own independent investigation. Properties are subject to change in price and/or availability without notice.