

Tukwila Commerce Park

12622B Interurban Ave S
Building B
Seattle, WA

6,270 SF total

2,490 SF office

12' clear height

2 drive-in doors

Available November 1, 2011

Excellent access to I-5
and SR-599

Lease rate:
\$5,316 per month, NNN

\$0.55 shell

\$0.75 office add-on



Location



Contact

Matt Wood, SIOR

206.248.7306

mwood@kiddermathews.com

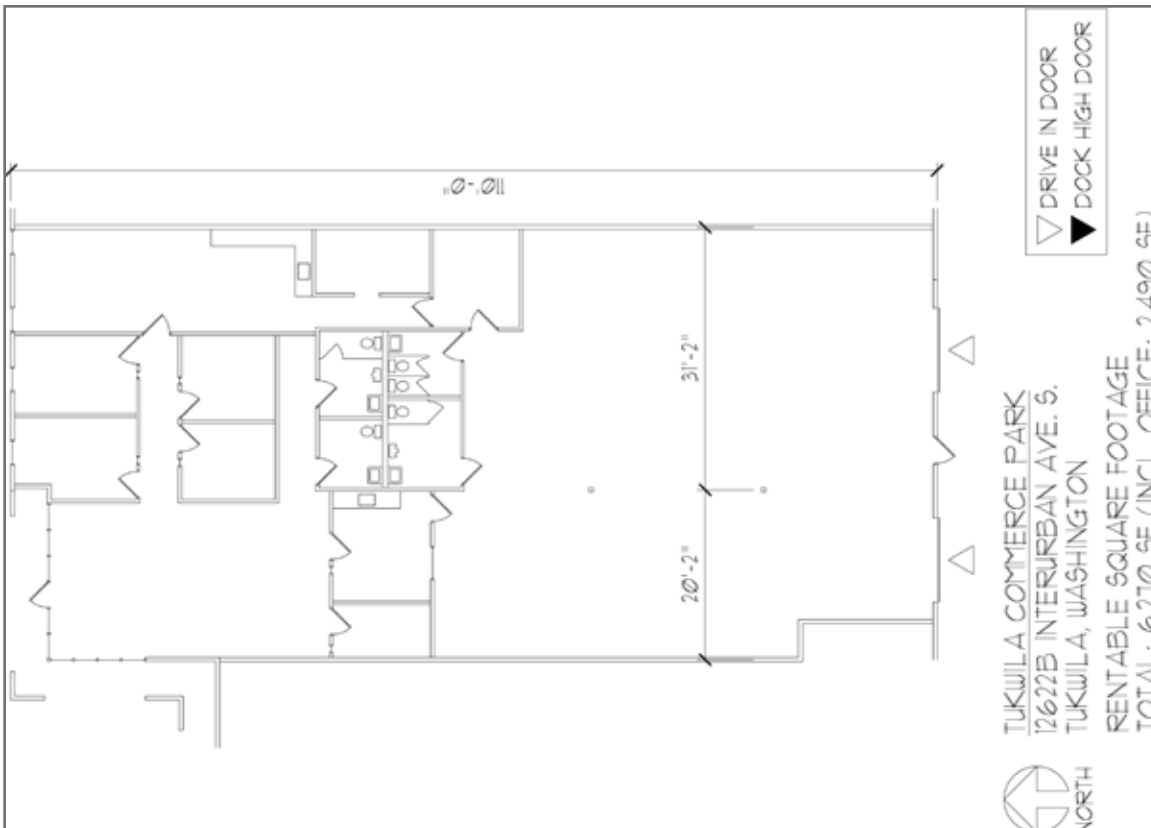
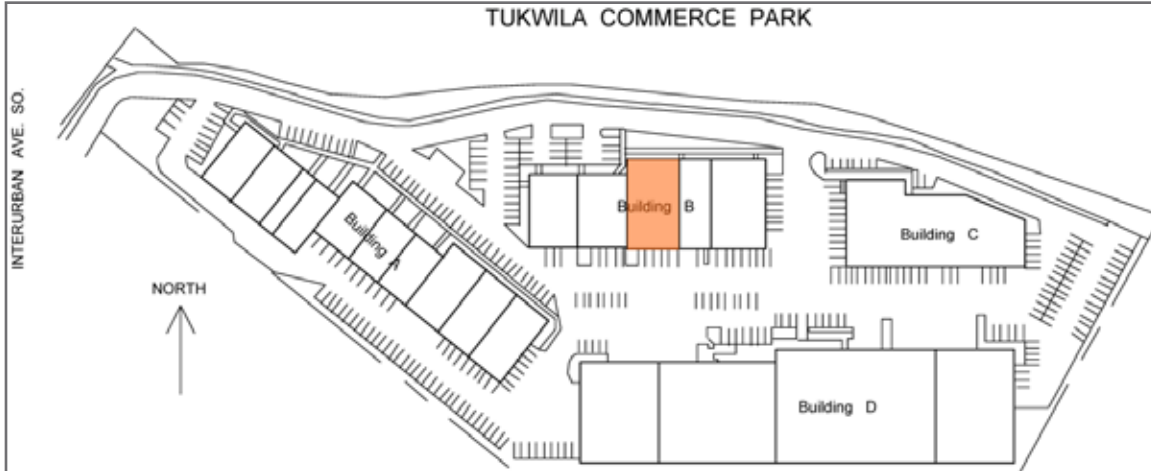
Jim Kidder, SIOR

206.248.7328

jkidder@kiddermathews.com



Tukwila Commerce Park, Building B



Contact

Matt Wood
206.248.7306
mwood@kiddermathews.com

Jim Kidder, SIOR
206.248.7328
jkidder@kiddermathews.com

