

RENAISSANCE TOWNE CENTER OFFICE

1509 – 1560 South Renaissance Towne Drive, Bountiful, Utah 84010



RENAISSANCE PLACE
UNDER CONSTRUCTION – Q2 2020 DELIVERY



BUILDING 1560



BUILDING 1512

FOR LEASE

PROPERTY FEATURES

- 1,496 – 4,687 SF available
- Modern finishes
- Office or medical design
- Improvements and allowances available
- Building signage available
- Ample parking including covered garage
- Prime hard-corner suite available
- Professional co-tenancy
- Excellent surrounding amenities

FOR MORE
INFORMATION
CONTACT

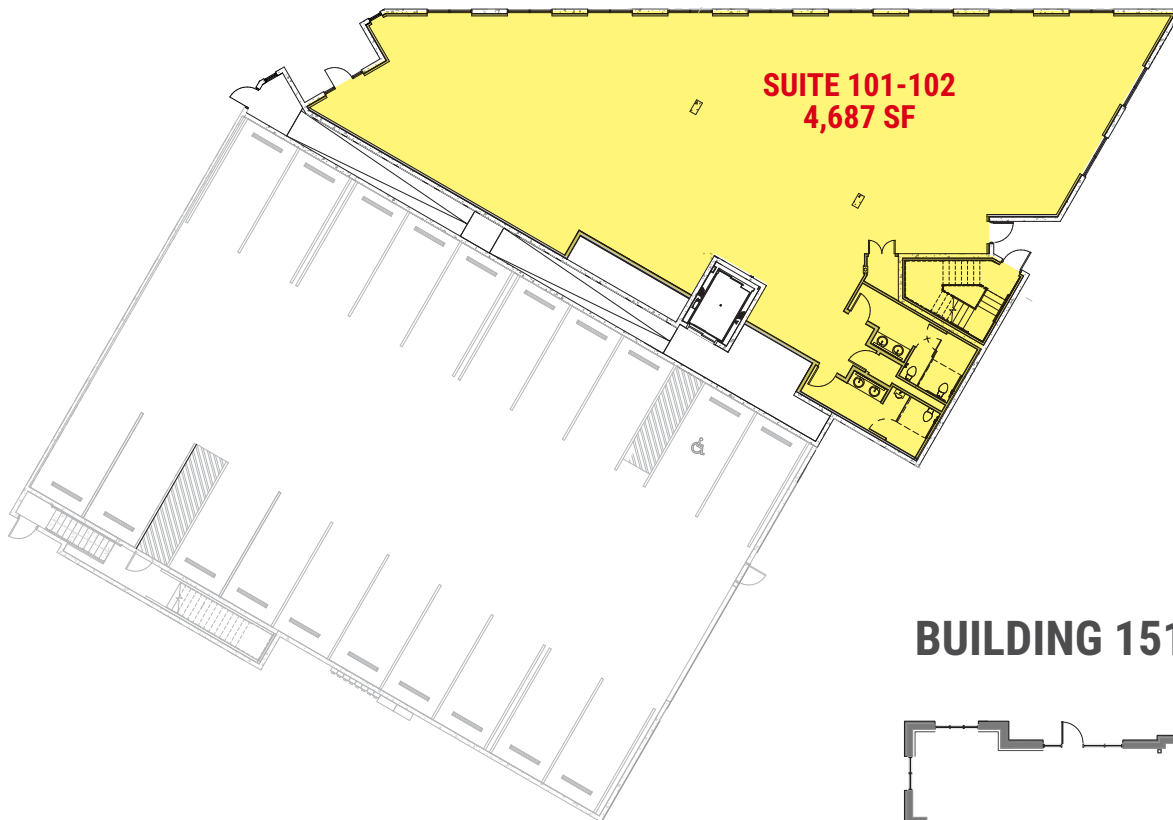
CHRIS FALK, CCIM, SIOR
801.416.1024
cfalk@ngacres.com

BRAXTON WILLIE, CCIM
801.416.1050
bwillie@ngacres.com

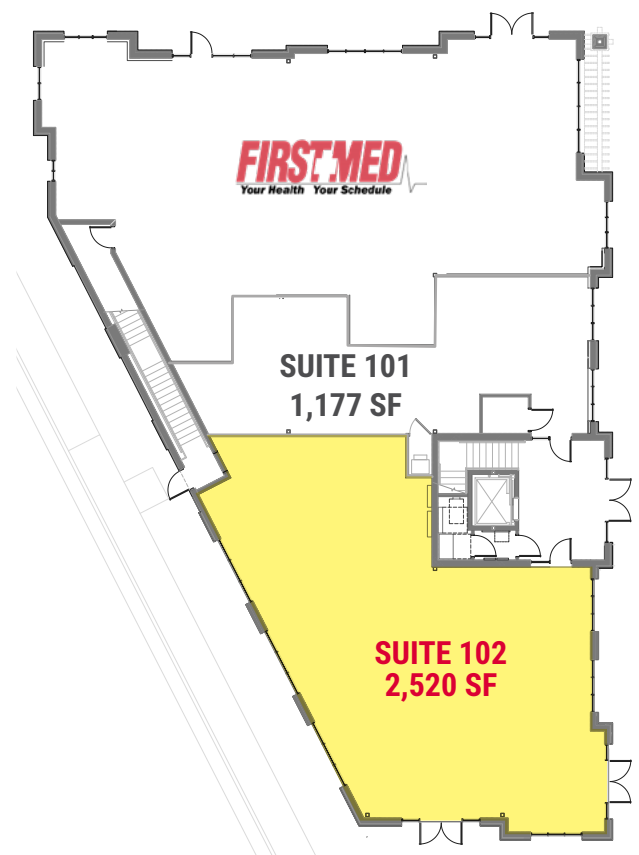
RENAISSANCE TOWNE CENTER OFFICE

1509 – 1560 South Renaissance Towne Drive, Bountiful, Utah 84010

RENAISSANCE PLACE UNDER CONSTRUCTION – Q2 2020 DELIVERY



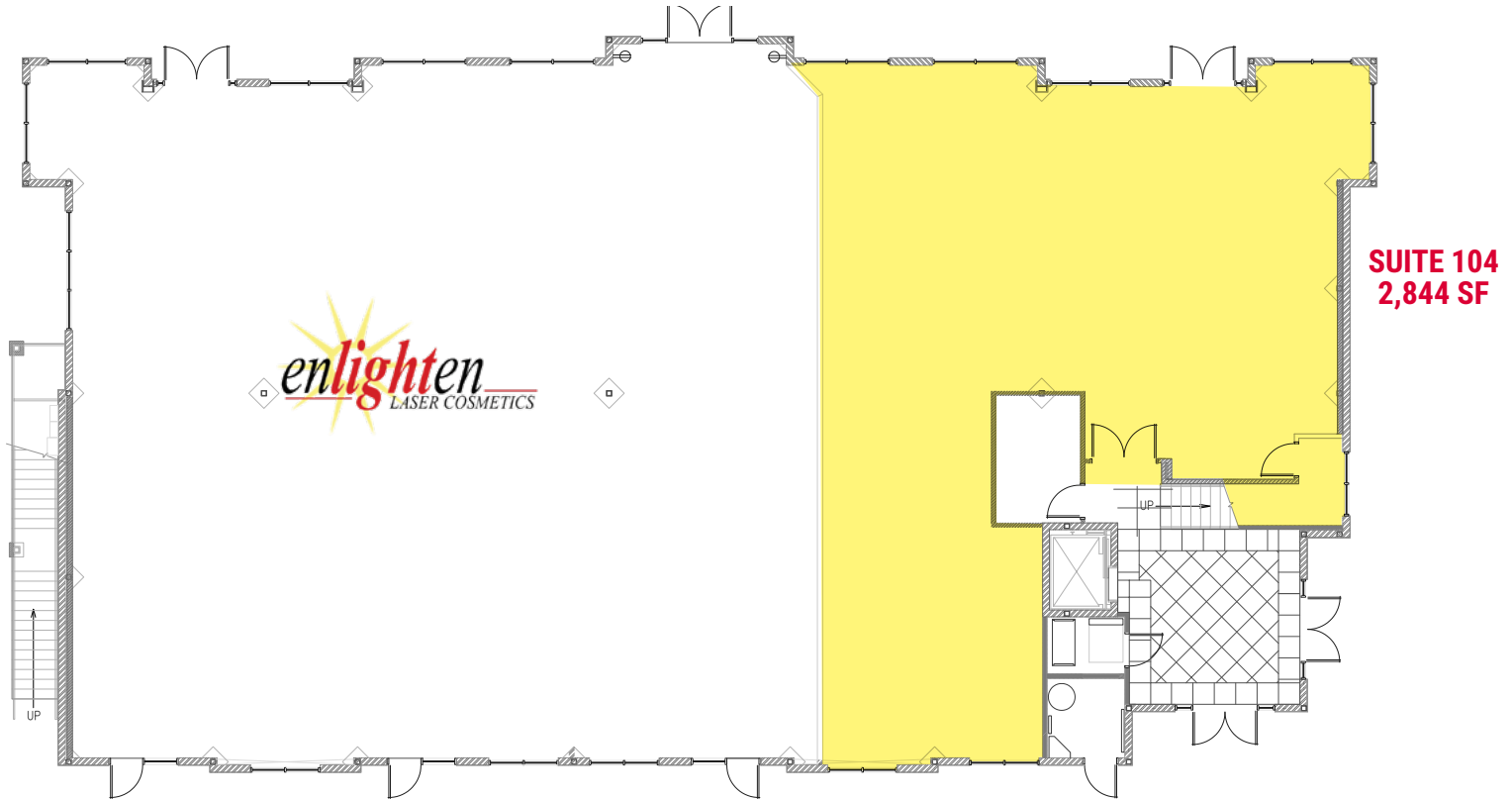
BUILDING 1512 MAIN LEVEL



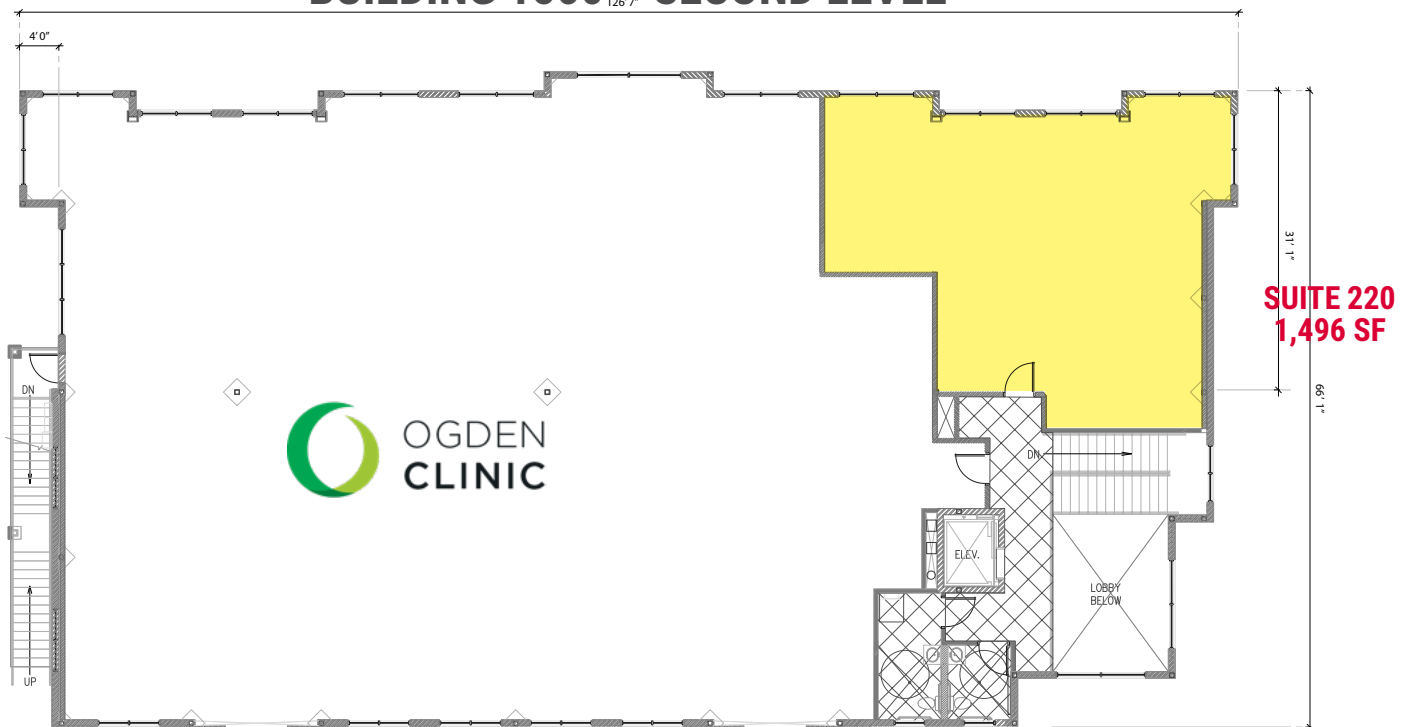
RENAISSANCE TOWNE CENTER OFFICE

1509 – 1560 South Renaissance Towne Drive, Bountiful, Utah 84010

BUILDING 1560 – MAIN LEVEL



BUILDING 1560 – SECOND LEVEL



RENAISSANCE TOWNE CENTER OFFICE

1509 – 1560 South Renaissance Towne Drive, Bountiful, Utah 84010



RENAISSANCE TOWNE CENTER OFFICE

1509 - 1560 South Renaissance Towne Drive, Bountiful, Utah 84010

