

Residential Development Land –15 Acres Plus 11 Developed Lots

Willow Lake Development – Single Family Homes

Huron Township, Ohio 44839 (Erie County)



Property Features:

- Bayfield Drive and Lake Breeze Drive
- Eleven (11) Developed Lots Available
- Past and Present Sales Range From \$29,900.00 to \$39,530.00 Per Lot
- Lots Range From .34± Acre to .43± Acre
- Phase II an Additional 15± Acre Parcel
- Site is Situated Off Perkins Avenue
- Easy Access to SR 2 and US 250
- Minutes From Osborn Park, Plum Brook Country Club
- Located Across From New Angel's Path Premier Residential Community
- Perkins Township School District

- Natural Gas At The Entrance on Perkins Ave
- Electric, Water, Sewer and Cable Improvements In Development and Stubbed For Phase II Development
- Land is Cleared and Being Farmed Until Phase II
- Entire Development For Sale - 15± Acres and Eleven (11) Individual Lots
- Eleven (11) Developed Lots @ \$20,000.00 a Lot (WHILE THEY LAST)
- 15± Acres at \$9,000.00 an Acre

Sale Priced at \$355,000.00



GLOBAL

www.GlobalCommercialRE.com

8585 East Ave., Mentor, Ohio 44060

Real Estate Advisors Inc.
BROKER

**Global Real Estate
Advisors, Inc.**

Neil Sawicki, SIOR, Broker

440-255-5552 x 221

440-339-8585 Cell

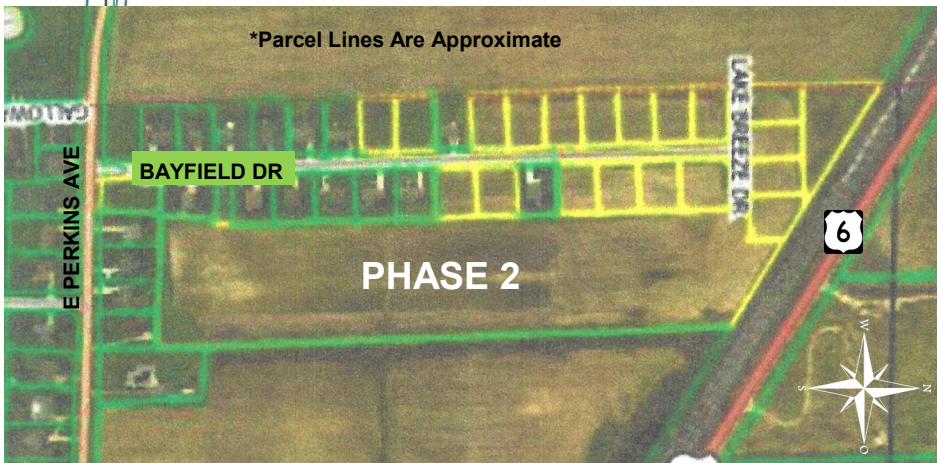
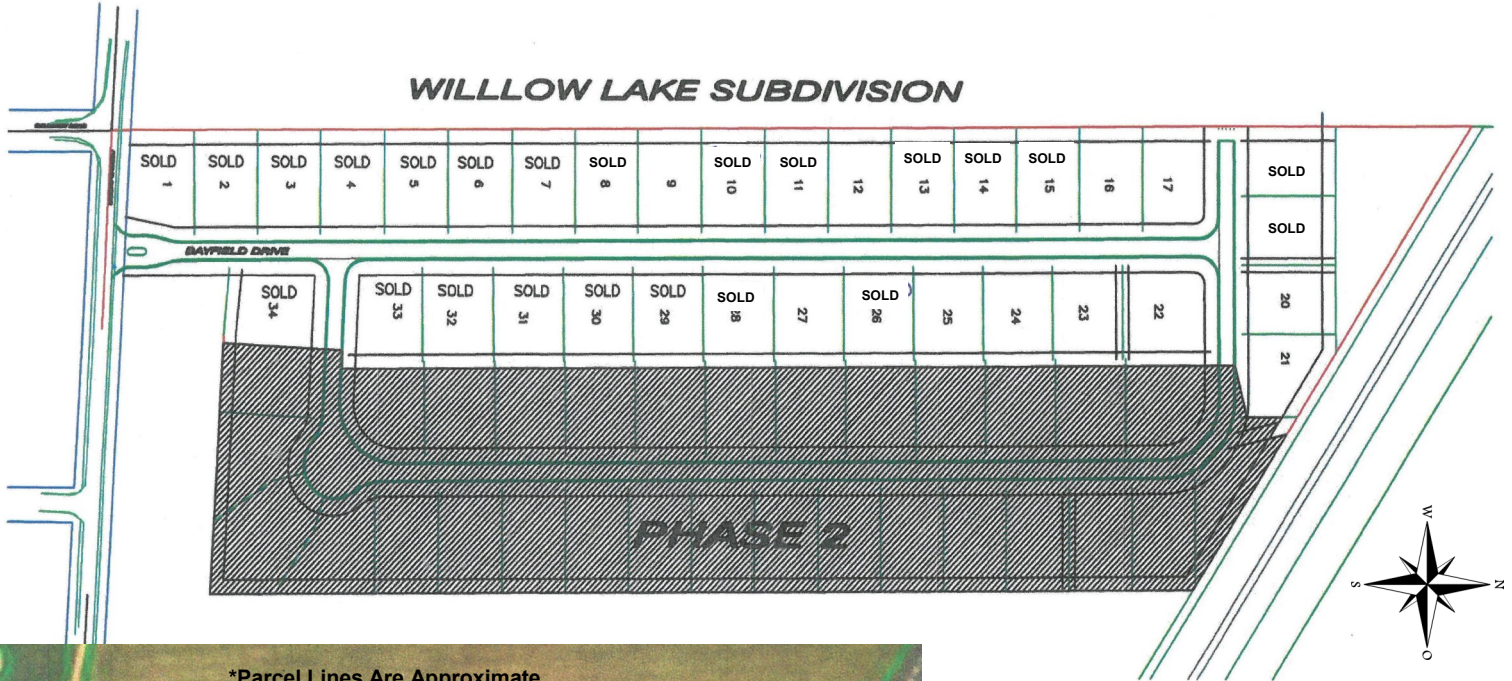
Neil@GlobalCommercialRE.com

This information has been secured from sources we believe are reliable, but we make no representations or warranties, expressed or implied, as to the accuracy of the information. References to condition, square footage or age are approximate. Buyer or Tenant acknowledges that they are relying on their own investigations and are not relying on Broker provided information. Procuring broker shall only be entitled to a commission, calculated in accordance with the rates approved by our principal only if such procuring broker executes a brokerage agreement acceptable to us and our principal and the conditions as set forth in the brokerage agreement are fully and unconditionally satisfied. Although all information furnished regarding property for sale, rental, or financing is from sources deemed reliable, such information has not been verified and no express representation is made nor is any to be implied as to the accuracy thereof and it is submitted subject to errors, omissions, change of price, rental or other conditions, prior sale, lease or financing, or withdrawal without notice and to any special conditions imposed by our principal.

Residential Development Land –15 Acres Plus 11 Developed Lots

Willow Lake Development – Single Family Homes

Huron Township, Ohio 44839 (Erie County)



2017 Demographics <small>Courtesy of STDB</small>			
	1 Mile	3 Miles	5 Miles
Population	2,355	19,075	41,054
Total Households	1,012	8,018	17,233
Total Household Units	1,067	9,187	20,426
Average Household Income	\$76,215	\$73,925	\$63,198



www.GlobalCommercialRE.com
 8585 East Ave., Mentor, Ohio 44060

Real Estate Advisors Inc.
 BROKER

Global Real Estate Advisors, Inc.

Neil Sawicki, SIOR, Broker

440-255-5552 x 221
 440-339-8585 Cell

Neil@GlobalCommercialRE.com

This information has been secured from sources we believe are reliable, but we make no representations or warranties, expressed or implied, as to the accuracy of the information. References to condition, square footage or age are approximate. Buyer or Tenant acknowledges that they are relying on their own investigations and are not relying on Broker provided information. Procuring broker shall only be entitled to a commission, calculated in accordance with the rates approved by our principal only if such procuring broker executes a brokerage agreement acceptable to us and our principal and the conditions as set forth in the brokerage agreement are fully and unconditionally satisfied. Although all information furnished regarding property for sale, rental, or financing is from sources deemed reliable, such information has not been verified and no express representation is made nor is any to be implied as to the accuracy thereof and it is submitted subject to errors, omissions, change of price, rental or other conditions, prior sale, lease or financing, or withdrawal without notice and to any special conditions imposed by our principal.