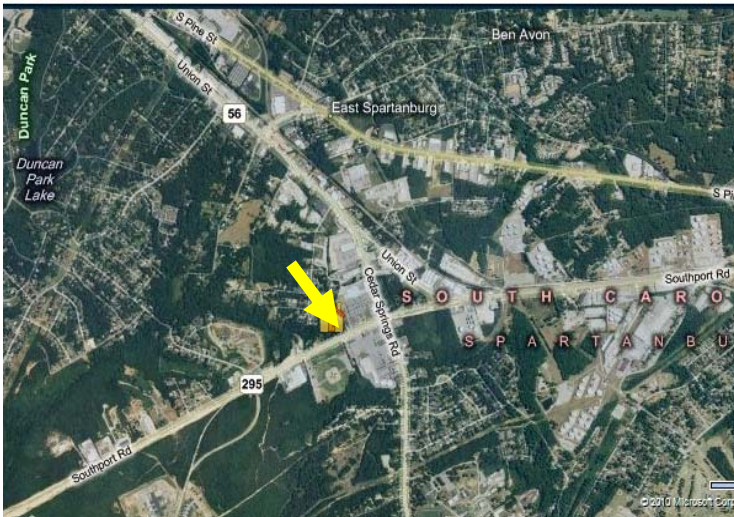


AVAILABLE

2129 Southport Road
Spartanburg, SC

Site Analysis
Commercial Sales
Development

**BANK OWNED
MAKE
AN OFFER!!**



- Retail strip center located on Southport Rd close to the intersection of Union St (Hwy. 56) and Southport Rd.
- Newly constructed 12,100+/- sq. ft. center divided into 1500+/- sq. ft. units
- 82 parks
- Approximately 12,600 CPD
- Demographics available upon request

LEASE RATE: \$10 sq.ft., Net, Net, Net
SALE PRICE: \$1,850,000



No warranty or representation, expressed or implied, is made to the accuracy of the information contained herein, and the same is submitted subject to errors, omissions, change of price, rental or other conditions, imposed by the principles.



Contact information

Andy Hayes/Ben Hines, CFP, CCIM
380 S. Pine Street
Spartanburg, SC 29601
Tel 864.583.1001 C – 864-706-0189
Fax 864.585.6188
ahayes@spencerhines.com
benhines@spencerhines.com
www.spencerhines.com