

**65 DIVISIBLE ACRES AVAILABLE IN GREENE COUNTY**

**Property Features**

- Division possibilities
- Local and State incentives to decrease development costs
- 35 Minutes from downtown Charlottesville, 2 hours from Washington D.C.
- Four-lane highway access
- Close proximity to National Ground Intelligence Center with 2000+ employees
- Nationally ranked quality of life with outdoor activities, vineyards, breweries, historic sites, shopping, education and medical facilities

**Site Features**

Acres Available	65.17
Timing	Immediate availability, divisions possible
Access	Four-lane highway access to Route 29

**Greene County**

“Greene County is a community that provides a high quality of life for residents of all ages that can only be found in the natural beauty of Central Virginia. The area provides a highly educated workforce and excellent public and private school systems. Greene County’s government agencies have been recognized as very business friendly. The locality is willing to offer aggressive incentives to prospective developers, and the Planning and Zoning Office is known in the region for their quick and easy zoning and permitting processes.”

- *Greene County Economic Development Office*

For more information, contact:

**JOHN PRITZLAFF**

Senior Vice President

434 234 8416

[john.pritzlaff@thalhimer.com](mailto:john.pritzlaff@thalhimer.com)

**JENNY STONER**

Associate

434 234 8417

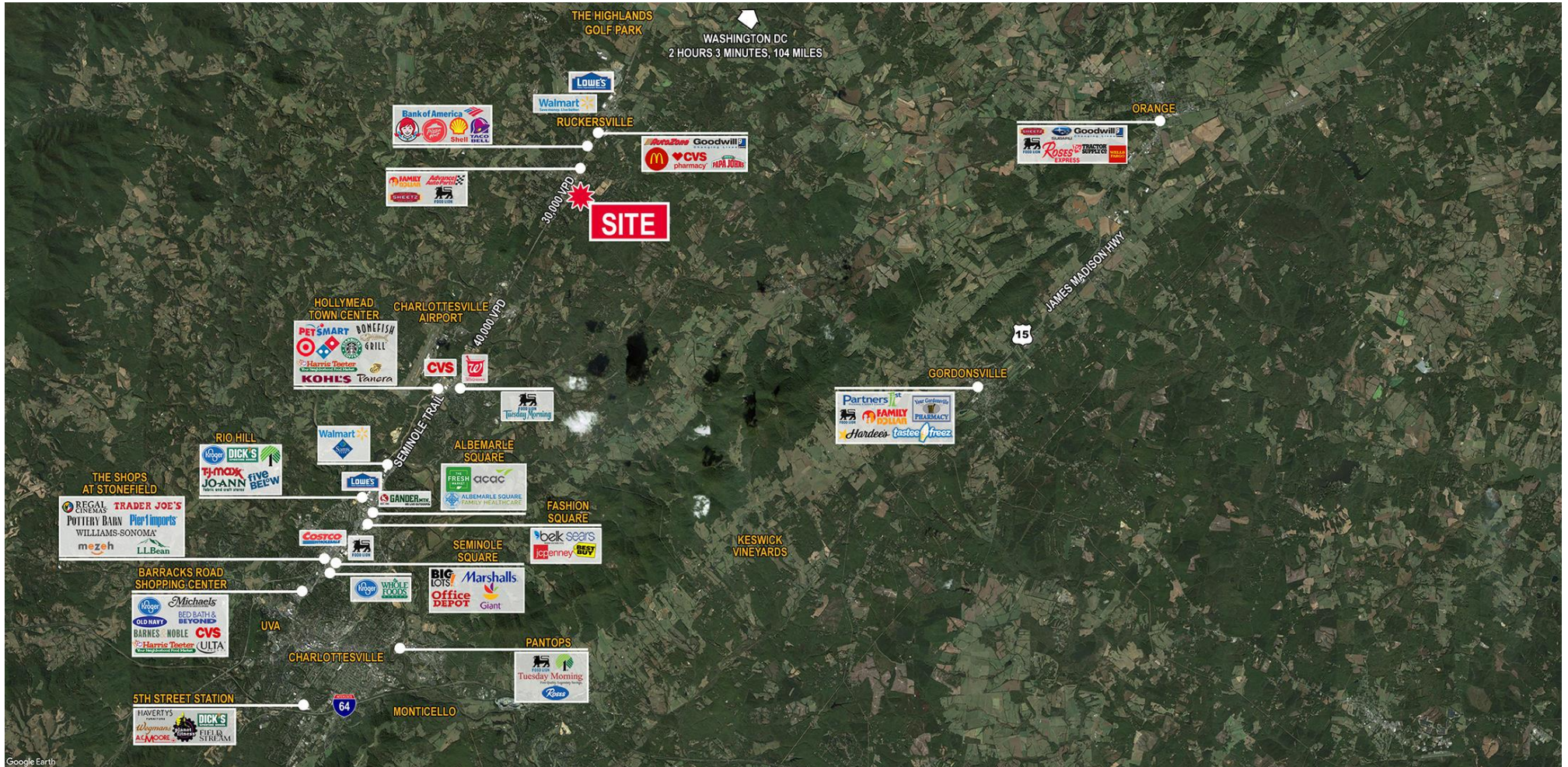
[jenny.stoner@thalhimer.com](mailto:jenny.stoner@thalhimer.com)

600 E. Water Street, Suite G

Charlottesville, VA 22902

[www.thalhimer.com](http://www.thalhimer.com)

LAND FOR SALE  
7070 Seminole Trail  
Route 29 | Ruckersville, Virginia



For more information, contact:

**JOHN PRITZLAFF**

Senior Vice President

434 234 8416

[john.pritzlaff@thalhimer.com](mailto:john.pritzlaff@thalhimer.com)

**JENNY STONER**

Associate

434 234 8417

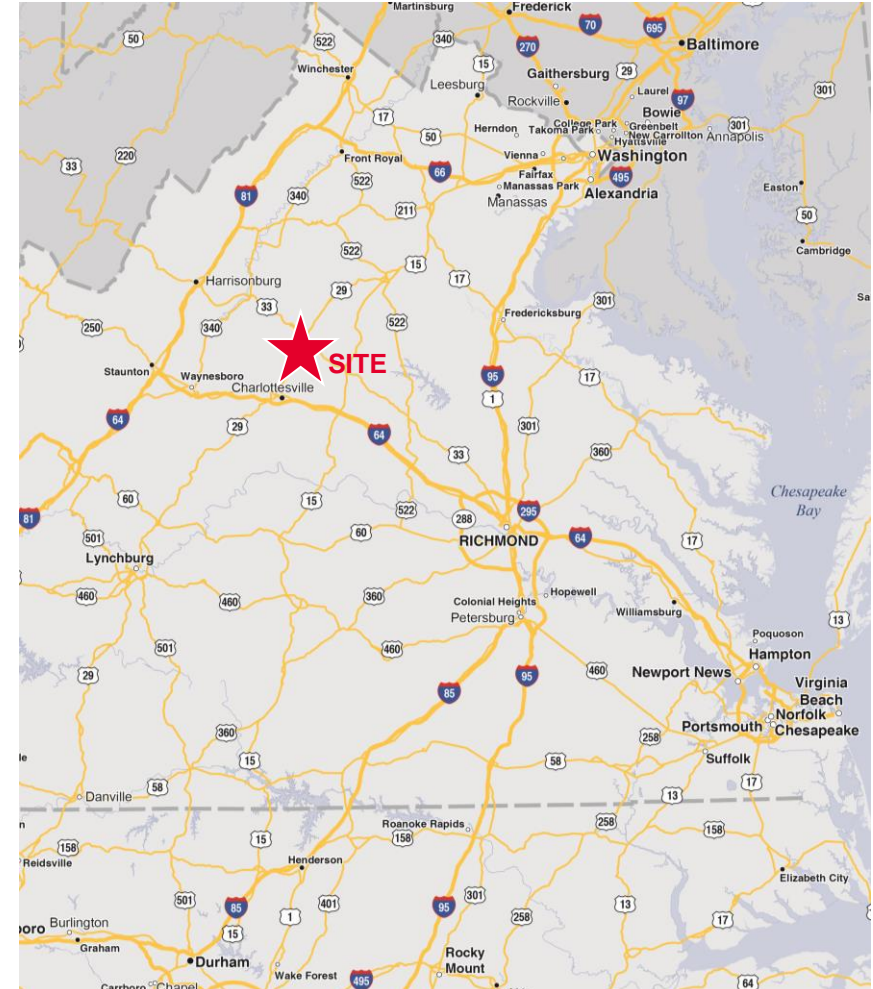
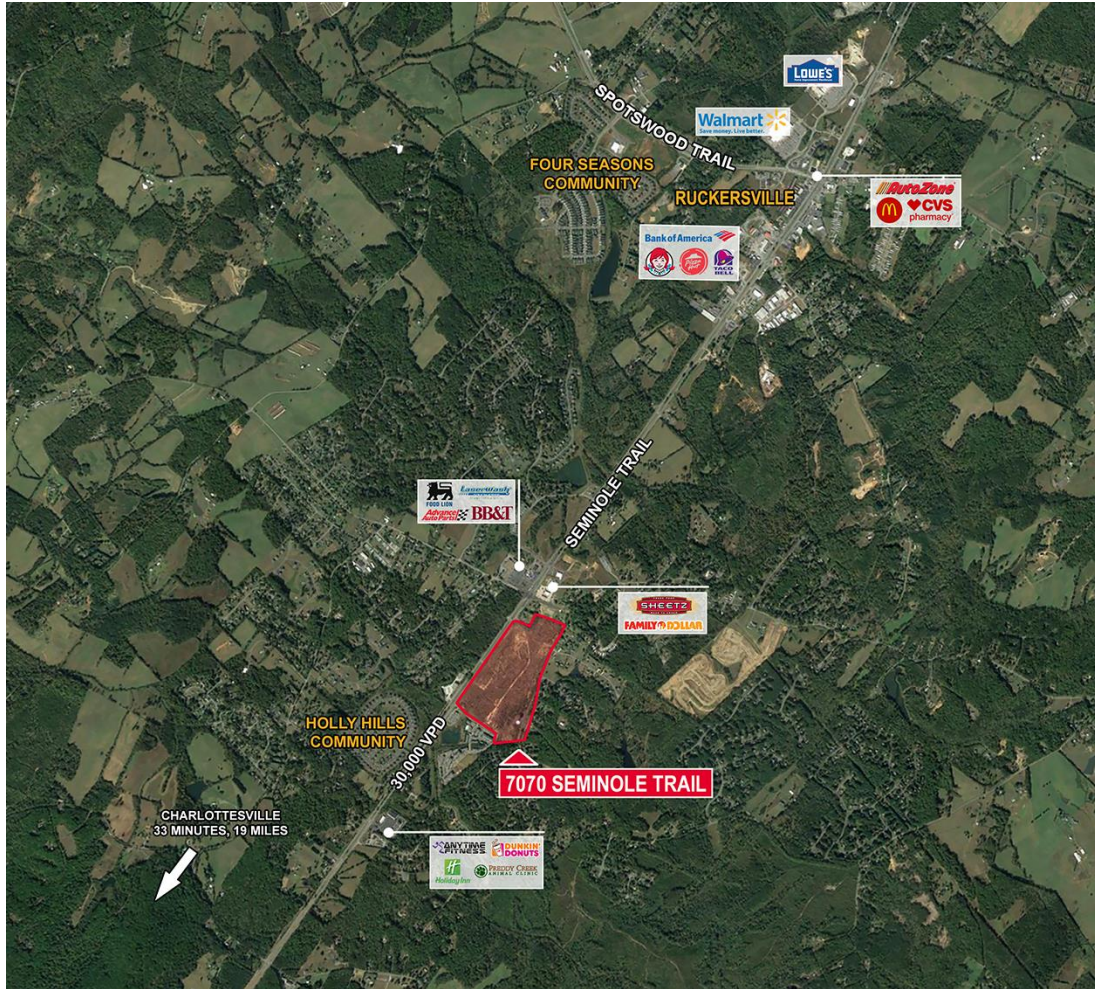
[jenny.stoner@thalhimer.com](mailto:jenny.stoner@thalhimer.com)

600 E. Water Street, Suite G

Charlottesville, VA 22902

[www.thalhimer.com](http://www.thalhimer.com)

**LAND FOR SALE**  
**7070 Seminole Trail**  
 Route 29 | Ruckersville, Virginia



For more information, contact:

**JOHN PRITZLAFF**  
 Senior Vice President  
 434 234 8416  
[john.pritzlaff@thalhimer.com](mailto:john.pritzlaff@thalhimer.com)

**JENNY STONER**  
 Associate  
 434 234 8417  
[jenny.stoner@thalhimer.com](mailto:jenny.stoner@thalhimer.com)

600 E. Water Street, Suite G  
 Charlottesville, VA 22902  
[www.thalhimer.com](http://www.thalhimer.com)