

Former Bucky Products

1200 W Nickerson
Seattle, WA

In City Warehouse Space

.....
22,452 SF total
.....

5,303 SF office
.....

17'1" clearance
.....

2 dock-high doors

4 drive-in doors
.....

Near Seattle Pacific University
campus
.....

Next to Burke Gilman Trail
.....

\$0.75 PSF, NNN
.....



Location



Contact

Ken Hirata

206.296.9625

khirata@kiddermathews.com
.....

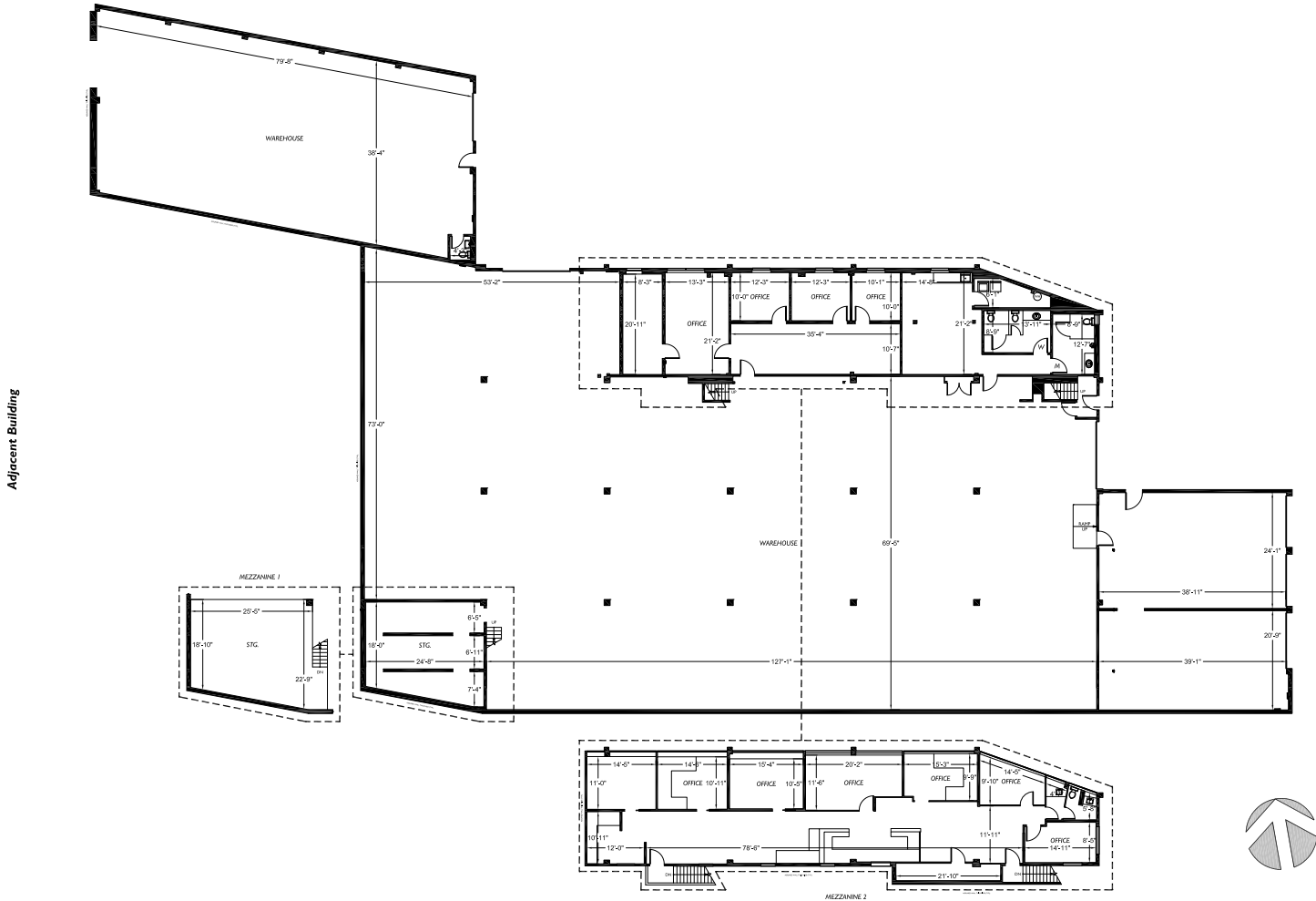
Jeff Loftus

206.248.7326

jloftus@kiddermathews.com
.....

Former Bucky Products

South Ship Canal Trail



Contact

Ken Hirata
 206.296.9625
 khirata@kiddermathews.com

Jeff Loftus
 206.248.7326
 jloftus@kiddermathews.com