

FOR LEASE

# OFFICE/INDUSTRIAL DELRAY NORTH BUSINESS CENTER

1395 NW 17H AVENUE

DELRAY BEACH, FL

33445



## DESCRIPTION

The subject property is conveniently located within close proximity to Interstate 95, accessible via Atlantic Avenue in the heart of Delray Beach. Situated within the beautifully manicured Delray Park of Commerce, the property offers a professional business park setting with great parking, clean image and well-maintained facilities.

## FEATURES

- + ±50,488 SF Total Building Size
- + Available Space - Suite 112A, ±1,930 SF (100% Office) - Available March 1
- + 14' - 20' Clear Height
- + Located between W. Atlantic Avenue and Woolbright Road on S. Congress Avenue with frontage along I-95
- + Situated in the Delray Park of Commerce master planned corporate park
- + Frontage, Signage and Visibility Available along I-95



## CONTACT

### JEFF KELLY

Executive Vice President  
+1 561 393 1621  
jeffrey.kelly@cbre.com

### KIRK NELSON

First Vice President  
+1 561 227 1803  
kirk.nelson@cbre.com

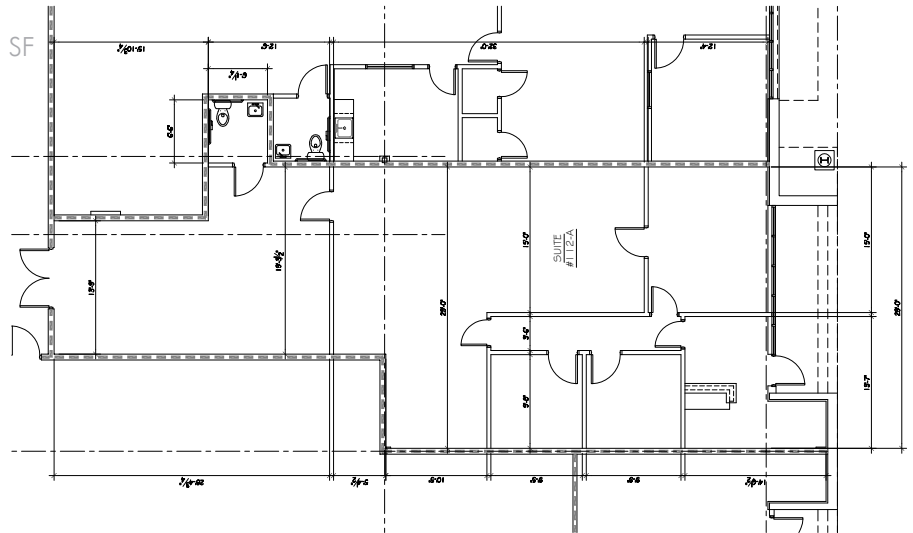
CBRE, Inc. | Licensed Real Estate Broker

# OFFICE/INDUSTRIAL SPACE FOR LEASE DELRAY NORTH BUSINESS CENTER

1395  
NW 17TH AVENUE  
Delray Beach, FL 33445

## FLOOR PLAN

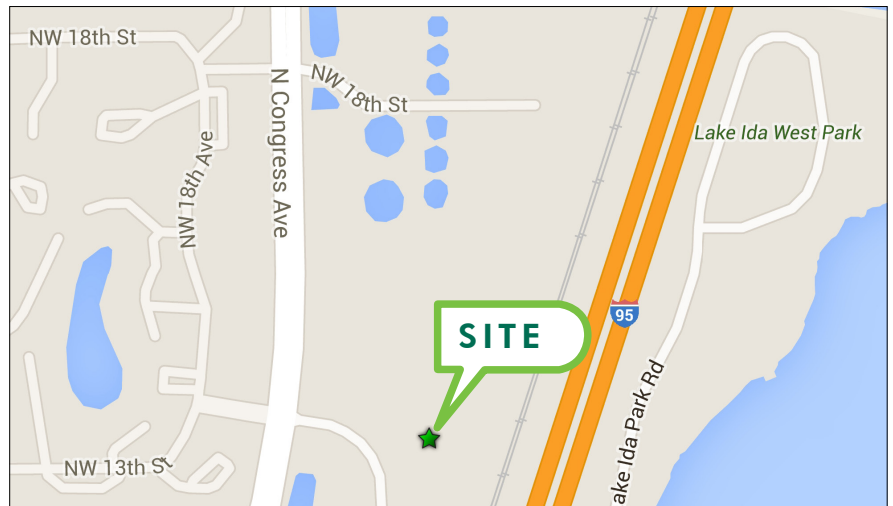
SUITE 112A  
Total - ±1,930 SF



## PHOTOS



## LOCATION MAP



## CONTACT

**JEFF KELLY**

Executive Vice President  
+1 561 393 1621  
jeffrey.kelly@cbre.com

**KIRK NELSON**

First Vice President  
+1 561 227 1803  
kirk.nelson@cbre.com

CBRE, Inc. | Licensed Real Estate Broker

© 2018 CBRE, Inc. This information has been obtained from sources believed reliable. We have not verified it and make no guarantee, warranty or representation about it. Any projections, opinions, assumptions or estimates used are for example only and do not represent the current or future performance of the property. You and your advisors should conduct a careful, independent investigation of the property to determine to your satisfaction the suitability of the property for your needs. CBRE and the CBRE logo are service marks of CBRE, Inc. and/or its affiliated or related companies in the United States and other countries. All other marks displayed on this document are the property of their respective owners.

# CBRE