

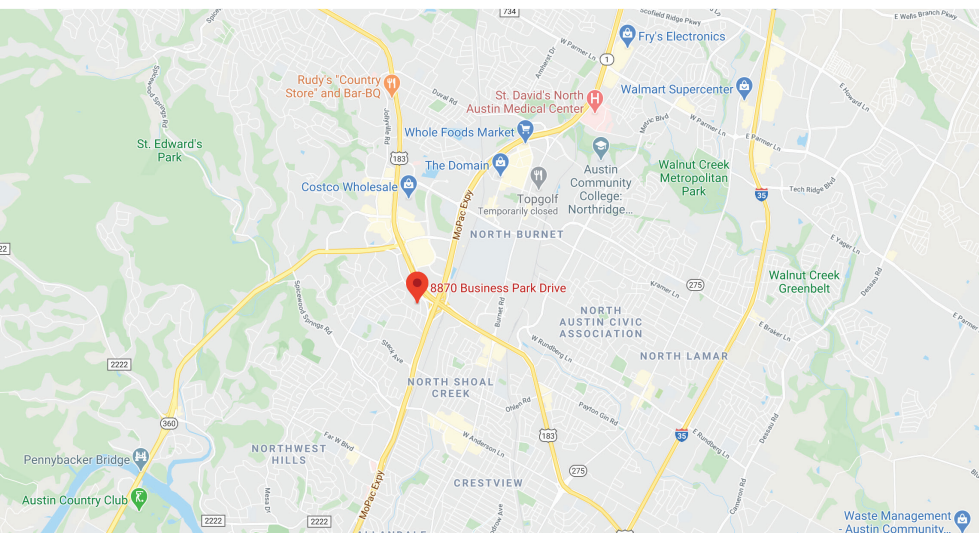
# OFFICE LEASE

8870 Business Park Drive  
Bldg B2, Ste. 500 | Austin, TX 78759

**TOWER**  
commercial  
CORPORATE REAL ESTATE ADVISORS



- 1,972 sq.ft.
- Consists of several offices and open area with cubicles
- Break area
- Available Immediately
- 3 to 5 year Lease Term
- Asking \$18/ft./yr plus expenses
- Expenses: \$8.25/ft./yr. plus E

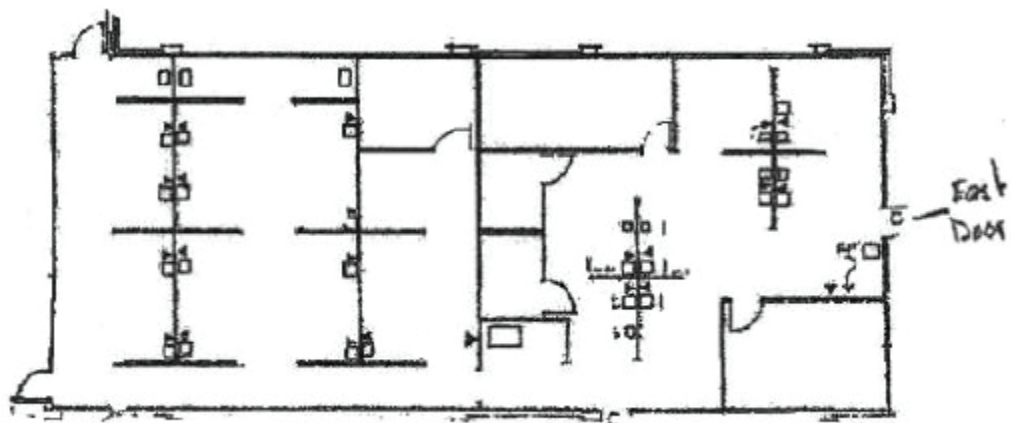


**CHRIS ODDO** (512) 736-5933  
codd@tower-commercial.com

5900 Southwest Pkwy | Suite 5-520 | Austin, TX  
78735 512.582.0150 | [www.tower-commercial.com](http://www.tower-commercial.com)

Information contained herein is deemed reliable but not guaranteed and should be independently verified; Broker assumes no responsibility for the accuracy thereof. Offering made subject to errors, omissions, change, sale or withdrawal without notice. Property is offered without regard to race, creed, nationality, disability or gender.





**CHRIS ODDO** (512) 736-5933  
coddoo@tower-commercial.com

5900 Southwest Pkwy | Suite 5-520 | Austin, TX  
78735 512.582.0150 | [www.tower-commercial.com](http://www.tower-commercial.com)

Information contained herein is deemed reliable but not guaranteed and should be independently verified; Broker assumes no responsibility for the accuracy thereof. Offering made subject to errors, omissions, change, sale or withdrawal without notice. Property is offered without regard to race, creed, nationality, disability or gender.