

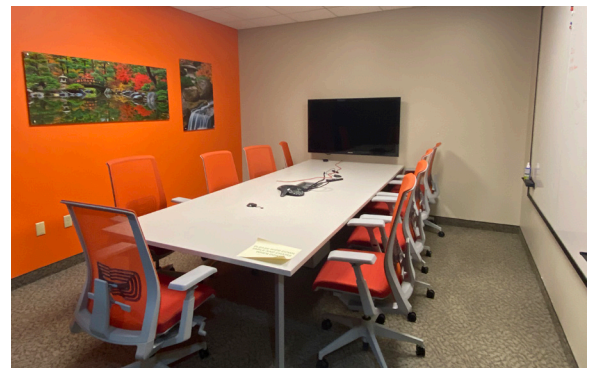
FOR LEASE

# 839 N. PERRYVILLE ROAD ROCKFORD, ILLINOIS



## PROPERTY FEATURES

- + Up to 8,106 RSF available. May be divided.
- + Attractive multi-tenant building at signalized intersection
- + Near E. State St. and N. Perryville Rd. Rockford's prime commercial corner
- + Excellent for a wide variety of office uses
- + Fiber serviced by AT&T and Comcast
- + 83 parking spaces, expandable by 50
- + Building & monument signage
- + Easy access to E. State Street and I-90 interchange
- + Close proximity to restaurants, hotels, medical center and the Chicago Rockford International Airport



## CONTACT

### KAREN WALSH

Senior Vice President  
+1 815 218 3438  
karen.walsh@cbre.com

[www.cbre.com/karen.walsh](http://www.cbre.com/karen.walsh)

**CBRE**

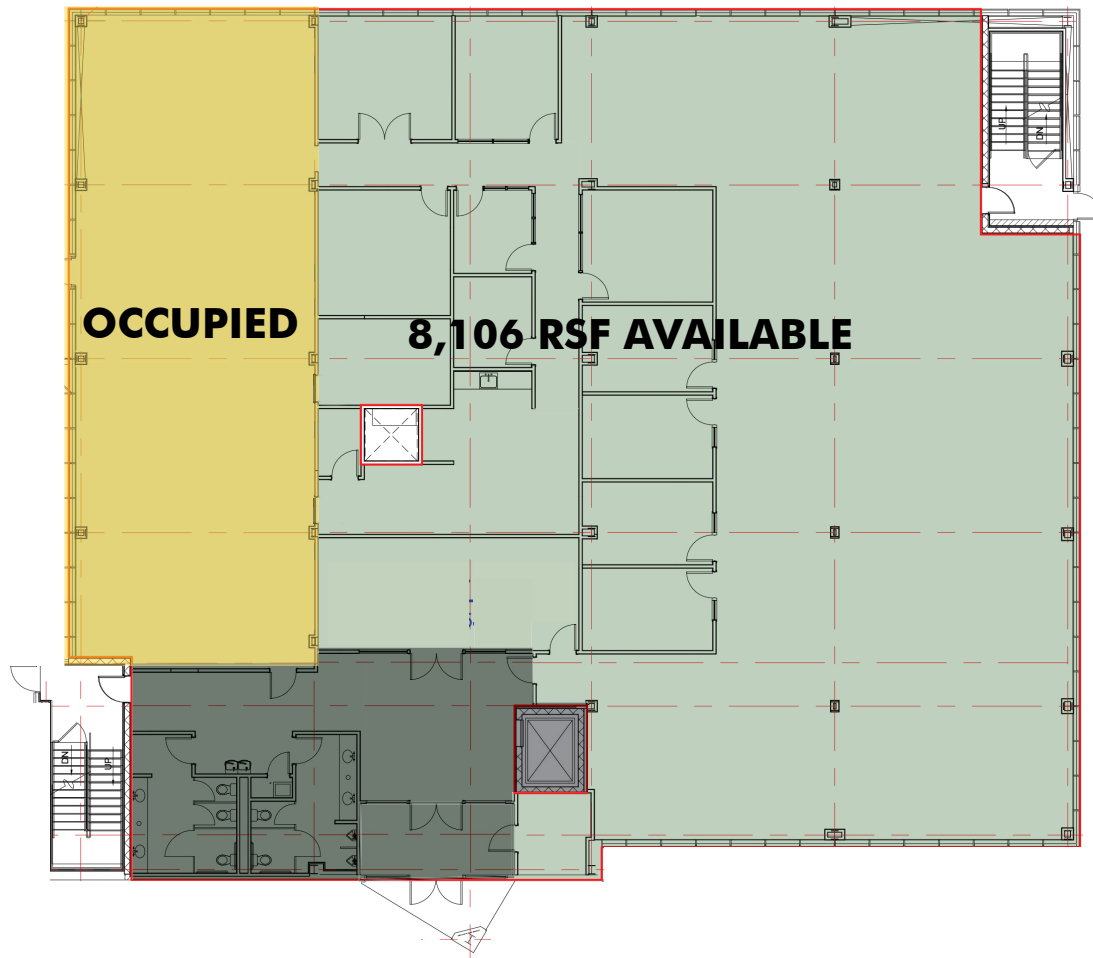
FOR LEASE

**839 N. PERRYVILLE ROAD, ROCKFORD, IL**

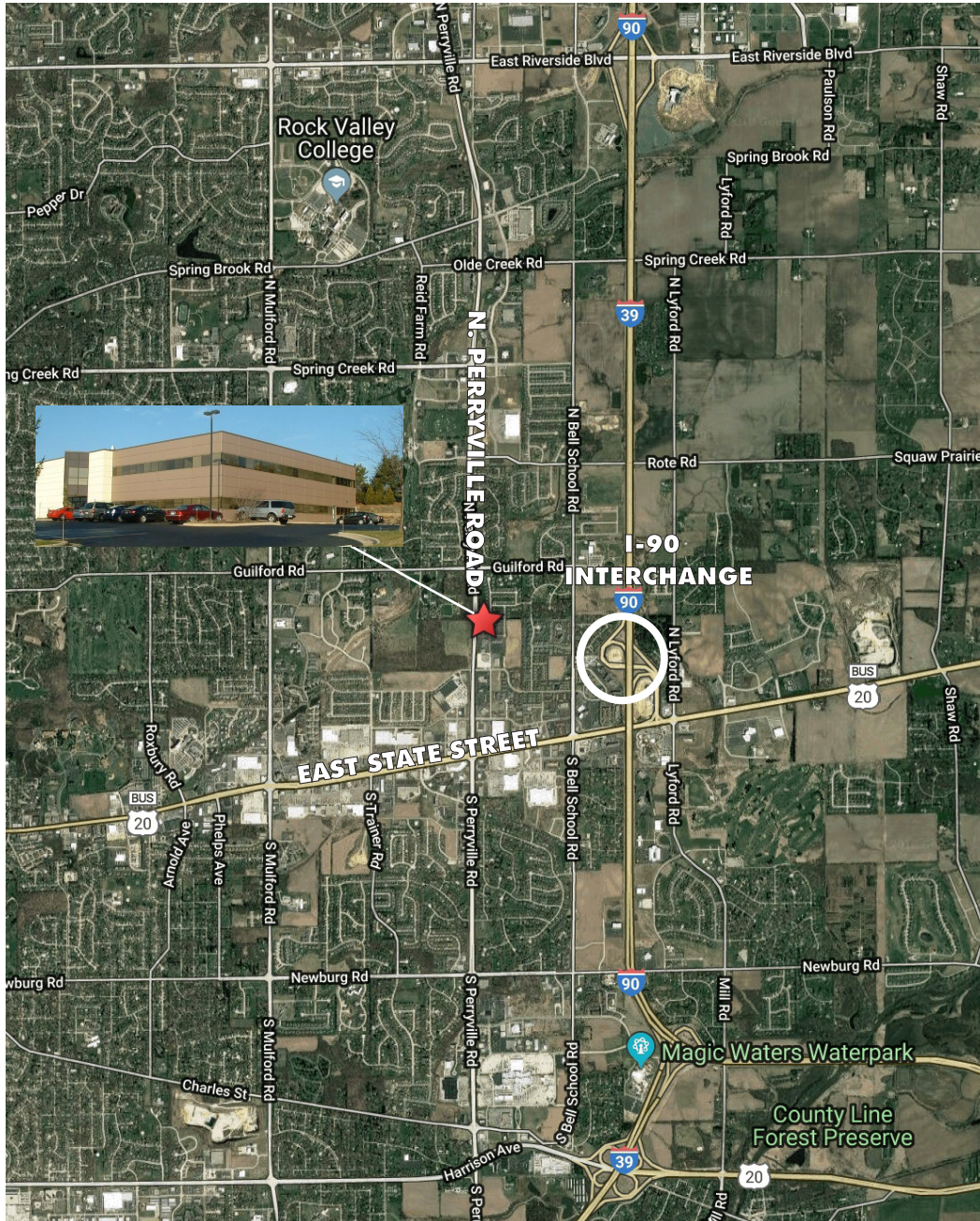


**FLOOR PLAN - FIRST FLOOR**

**AVAILABLE 8,106 RSF**



# FOR LEASE 839 N. PERRYVILLE ROAD, ROCKFORD, IL



© 2022 CBRE, Inc. The information contained in this document has been obtained from sources believed reliable. While CBRE, Inc. does not doubt its accuracy, CBRE, Inc. has not verified it and makes no guarantee, warranty or representation about it. It is your responsibility to independently confirm its accuracy and completeness. Any projections, opinions, assumptions or estimates used are for example only and do not represent the current or future performance of the property. The value of this transaction to you depends on tax and other factors which should be evaluated by your tax, financial and legal advisors. You and your advisors should conduct a careful, independent investigation of the property to determine to your satisfaction the suitability of the property for your needs. Photos herein are the property of their respective owners and use of these images without the express written consent of the owner is prohibited. CBRE and the CBRE logo are service marks of CBRE, Inc. and/or its affiliated or related companies in the United States and other countries. All other marks displayed on this document are the property of their respective owners.