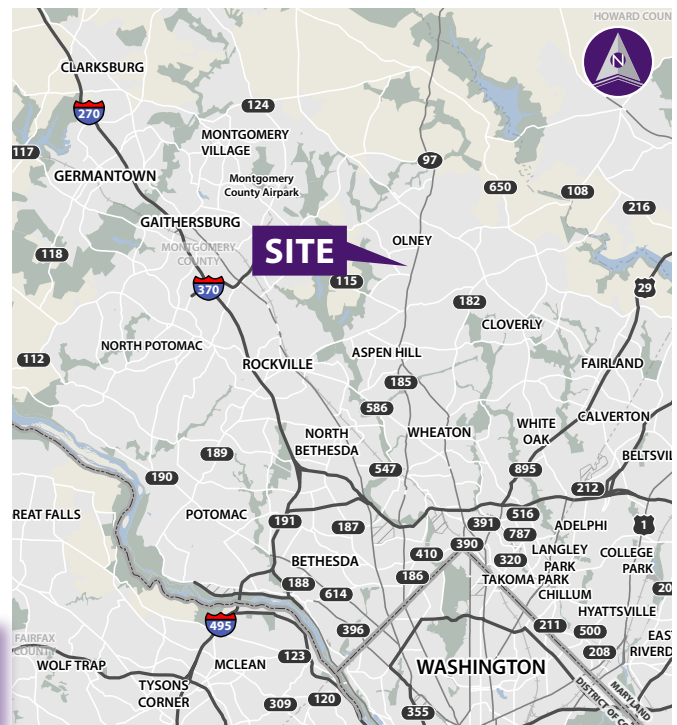
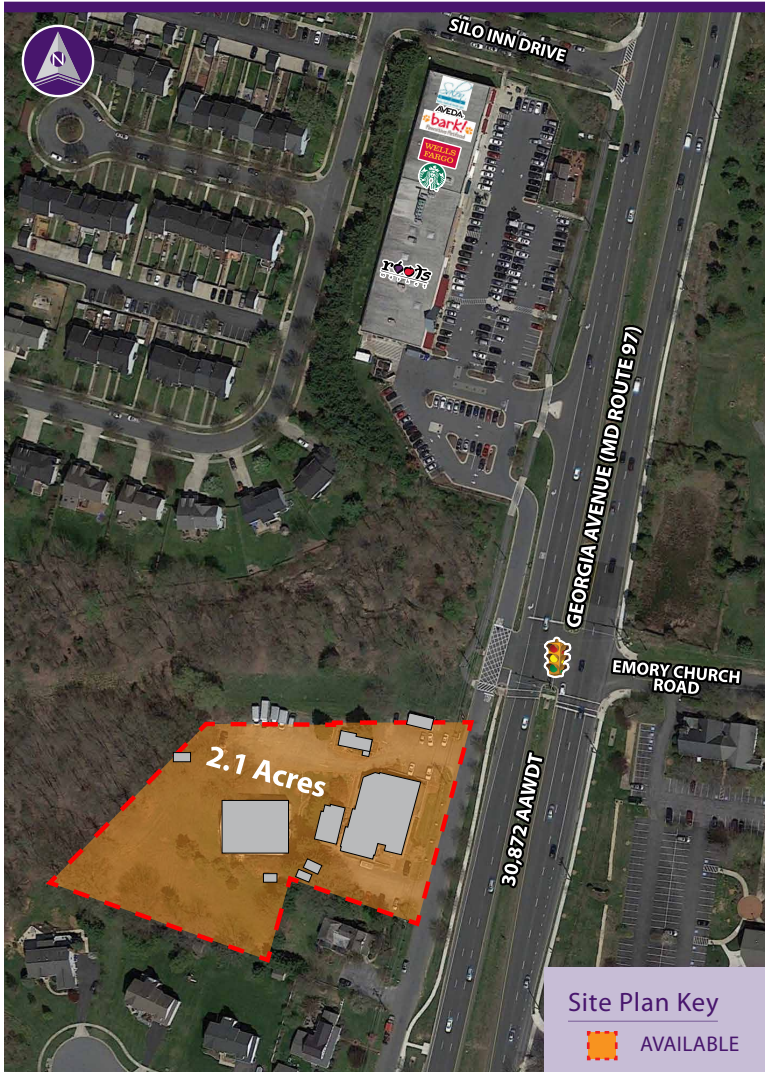


16650 Georgia Avenue

OLNEY, MD 20832

Ground Lease Opportunity



Demographics (2017 Estimated)

	1 Mile	3 Mile	5 Mile
Population	6,286	76,298	183,956
Average HH Income	\$183,187	\$127,429	\$127,269
Number of Employees	983	14,597	45,448

Please Contact

Brian C. Mitchell

240.482.3604 (direct)
301.656.3030 (office)
bmitchell@hrretail.com

Suzanne M. Katz

410.308.6356 (direct)
410.308.0800 (office)
skatz@hrretail.com

Kyle Leibowitz

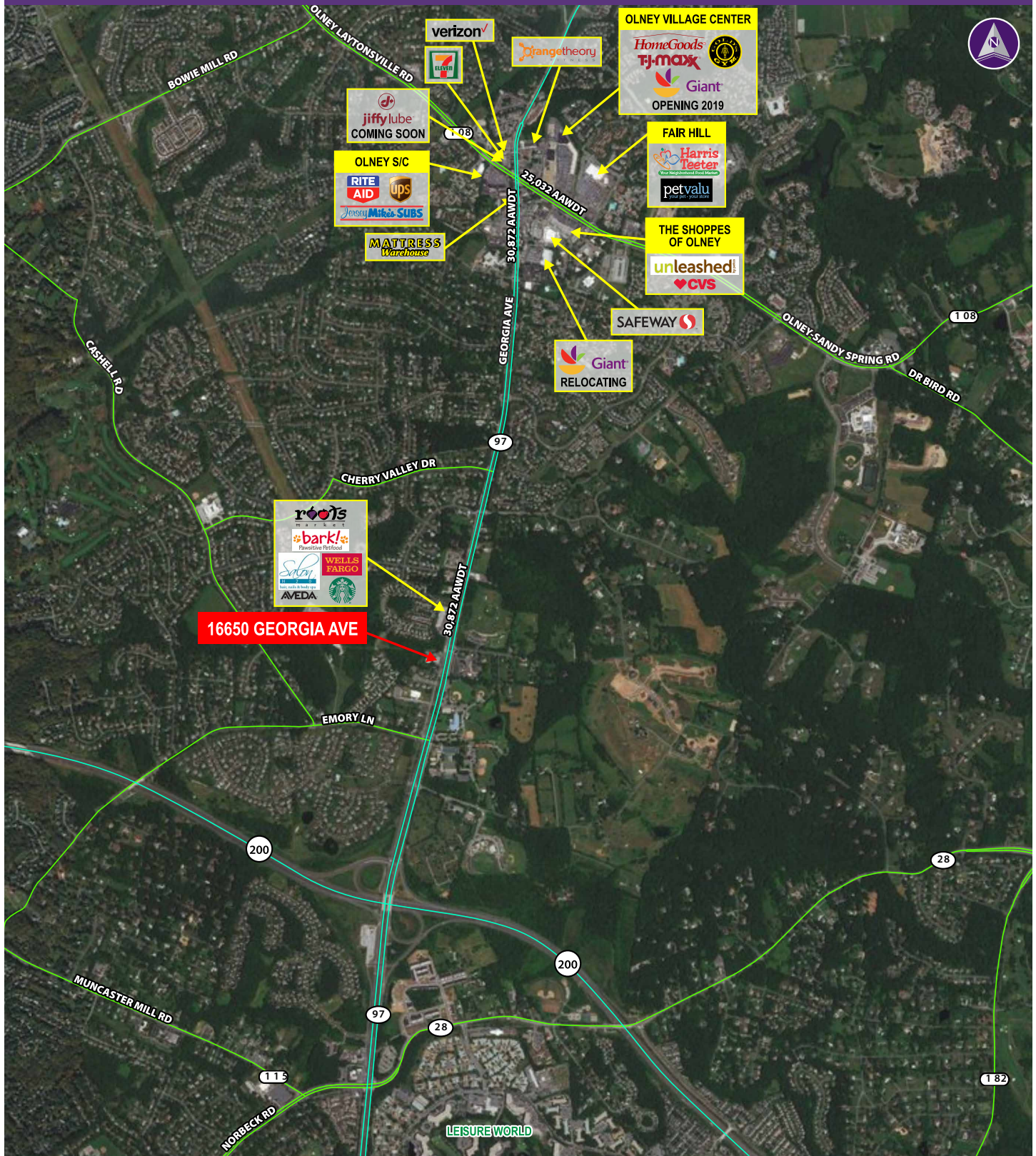
410.303.2721 (cell)
410.342.5263 (office)
kyle@avenurealestatellc.com

Property Highlights

- Two-Level building
- Conditional or Permitted Uses: Daycare, Independent Living Facilities for Seniors, Residential Care Facilities, Religious Assembly, Hospital, Animal Boarding, Veterinary Hospital
- Zoning: R-200
- Traffic Count: 30,872 AAWDT on Georgia Avenue



16650 GEORGIA AVENUE ■ OLNEY, MD



Information herein has been obtained from sources believed to be reliable. While we do not doubt its accuracy, we have not verified it and make no guarantee, warranty or representation about it. Independent confirmation of its accuracy and completeness is your responsibility. H&R Retail, Inc.