

AVAILABLE

Independence Retail Center



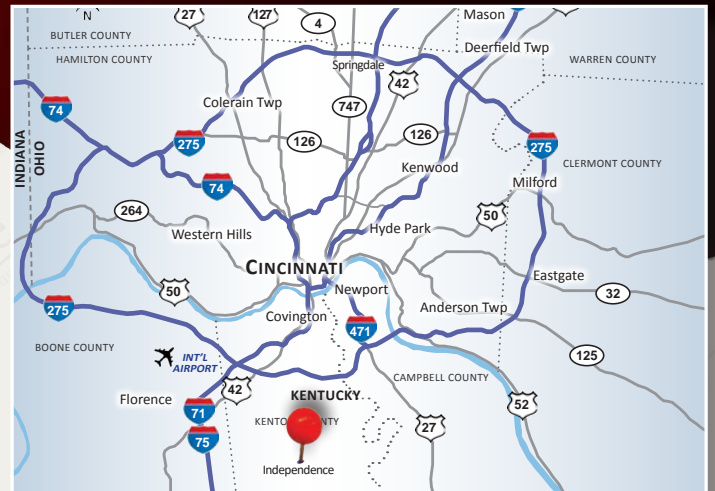
Centennial Plaza | Centennial Boulevard, Independence, KY 41051

PROPERTY HIGHLIGHTS

-  2,247 SF End-cap with Drive-thru
-  Monument Signage Available
-  One of Greater Cincinnati's Fastest Growing Areas
-  In the Heart of Independence's Commercial District
-  Conveniently located between KY-17 and Madison Pike
-  13,228 Square Foot Neighborhood Retail Center
-  **Traffic Counts:** KY-17 12,800 ADT

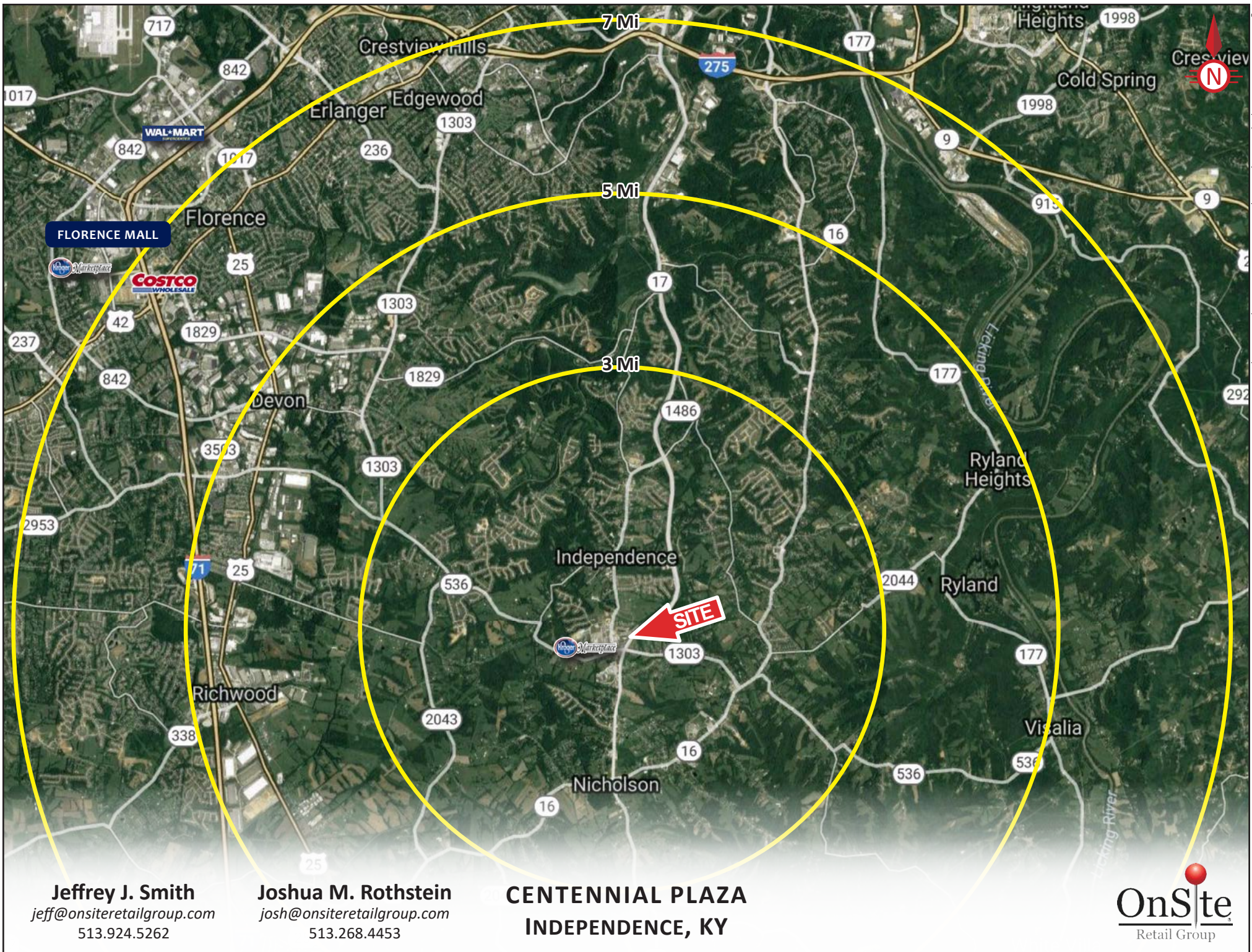
<u>Year 2017</u>	<u>One Mile</u>	<u>Three Mile</u>	<u>Five Mile</u>
Estimated Population	3,402	24,365	58,732
Median HH Income	\$75,141	\$77,573	\$74,179
Average HH Income	\$83,046	\$84,982	\$82,818

DEMOGRAPHICS



Joshua M. Rothstein
josh@onsiteretailgroup.com
513.268.4453

Jeffrey J. Smith
jeff@onsiteretailgroup.com
513.924.5262



Logos are for identification purposes only and may be trademarks of their respective companies.

Jeffrey J. Smith
 jeff@onsiteretailgroup.com
 513.924.5262

Joshua M. Rothstein
 josh@onsiteretailgroup.com
 513.268.4453

**CENTENNIAL PLAZA
 INDEPENDENCE, KY**





Available
2,247 SF

Monument Signage

Jeffrey J. Smith
jeff@onsiteretailgroup.com
513.924.5262

Joshua M. Rothstein
josh@onsiteretailgroup.com
513.268.4453

CENTENNIAL PLAZA INDEPENDENCE, KY



The information herein is produced using data from private and government sources deemed to be reliable and is provided without representation or warranty. Logos are for identification purposes only and may be trademarks of their respective companies. © 2018 OnSite Retail Group, LLC All Rights Reserved.

Centennial Plaza

Centennial Boulevard, Independence, KY 41051



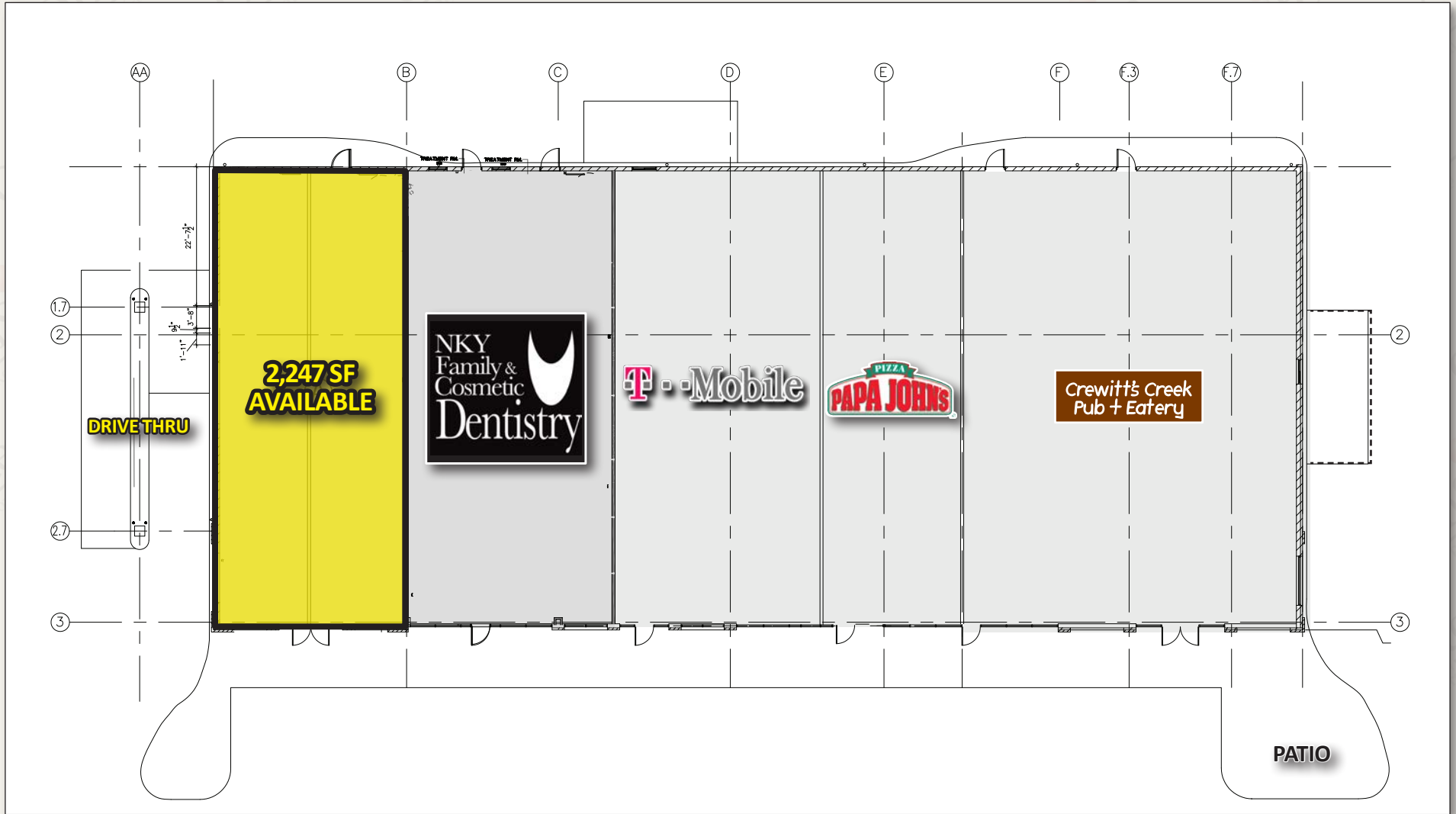
Jeffrey J. Smith
jeff@onsiteretailgroup.com
513.924.5262



Joshua M. Rothstein
josh@onsiteretailgroup.com
513.268.4453

Centennial Plaza

Centennial Boulevard, Independence, KY 41051



Jeffrey J. Smith
jeff@onsiteretailgroup.com
513.924.5262



Joshua M. Rothstein
josh@onsiteretailgroup.com
513.268.4453

SUMMARY PROFILE

2000-2010 Census, 2017 Estimates with 2022 Projections

Calculated using Weighted Block Centroid from Block Groups



Lat/Lon: 38.9301/-84.5422

RS1

Centennial Blvd		1 mi radius	3 mi radius	5 mi radius
Independence, KY 41051				
POPULATION	2017 Estimated Population	3,402	24,365	58,732
	2022 Projected Population	3,388	24,444	59,315
	2010 Census Population	2,849	21,874	53,764
	2000 Census Population	2,131	13,268	40,783
	Projected Annual Growth 2017 to 2022	-0.1%	0.1%	0.2%
	Historical Annual Growth 2000 to 2017	3.5%	4.9%	2.6%
	2017 Median Age	36	34.2	34.6
HOUSEHOLDS	2017 Estimated Households	1,180	8,383	20,550
	2022 Projected Households	1,192	8,525	21,037
	2010 Census Households	972	7,331	18,419
	2000 Census Households	723	4,500	13,959
	Projected Annual Growth 2017 to 2022	0.2%	0.3%	0.5%
	Historical Annual Growth 2000 to 2017	3.7%	5.1%	2.8%
RACE AND ETHNICITY	2017 Estimated White	93.1%	94.4%	92.4%
	2017 Estimated Black or African American	3.4%	2.1%	2.7%
	2017 Estimated Asian or Pacific Islander	1.6%	1.6%	1.4%
	2017 Estimated American Indian or Native Alaskan	0.3%	0.2%	0.2%
	2017 Estimated Other Races	1.7%	1.8%	3.3%
	2017 Estimated Hispanic	1.8%	1.8%	3.7%
INCOME	2017 Estimated Average Household Income	\$83,046	\$84,982	\$82,818
	2017 Estimated Median Household Income	\$75,141	\$77,573	\$74,179
	2017 Estimated Per Capita Income	\$28,885	\$29,273	\$29,036
EDUCATION (AGE 25+)	2017 Estimated Elementary (Grade Level 0 to 8)	4.2%	2.9%	3.1%
	2017 Estimated Some High School (Grade Level 9 to 11)	5.9%	6.6%	6.8%
	2017 Estimated High School Graduate	34.9%	29.5%	29.2%
	2017 Estimated Some College	21.5%	21.8%	23.6%
	2017 Estimated Associates Degree Only	11.9%	9.9%	9.9%
	2017 Estimated Bachelors Degree Only	17.0%	21.7%	18.7%
BUSINESS	2017 Estimated Graduate Degree	4.6%	7.6%	8.7%
	2017 Estimated Total Businesses	167	367	962
	2017 Estimated Total Employees	1,716	3,374	12,904
	2017 Estimated Employee Population per Business	10.3	9.2	13.4
	2017 Estimated Residential Population per Business	20.3	66.5	61.0

This report was produced using data from private and government sources deemed to be reliable. The information herein is provided without representation or warranty.