

1540 Market Street



Hayes Valley Creative Office

Multiple Options Available
1,051-5,526 RSF

San Francisco, California

Innovation Properties Group

181 2nd Street, San Francisco, CA
www.ipgsf.com | CL 02031924

Johan Quie

(415) 349-7738 | johan@ipgsf.com
BRE 01948103 | CL 02031924

Charlie Cutler

(415) 850-4935 | charlie@ipgsf.com
BRE 02026787 | CL 02031924



1540 Market Street

Space Highlights

- Rare Hayes Valley legal office space
- Open work space for 25+ workstations
- Two (2) small meeting rooms
- One (1) large “all hands” meeting room
- Super creative artwork decor
- Sunny window-line natural light
- In-suite kitchen
- Private office space (not co-working)
- Secure premises + onsite management
- Bart/Muni close by
- Access 24/7 - 365 days
- Prime location with food options
- Flexible lease terms (short term OK)
- Same day tours available

Innovation Properties Group

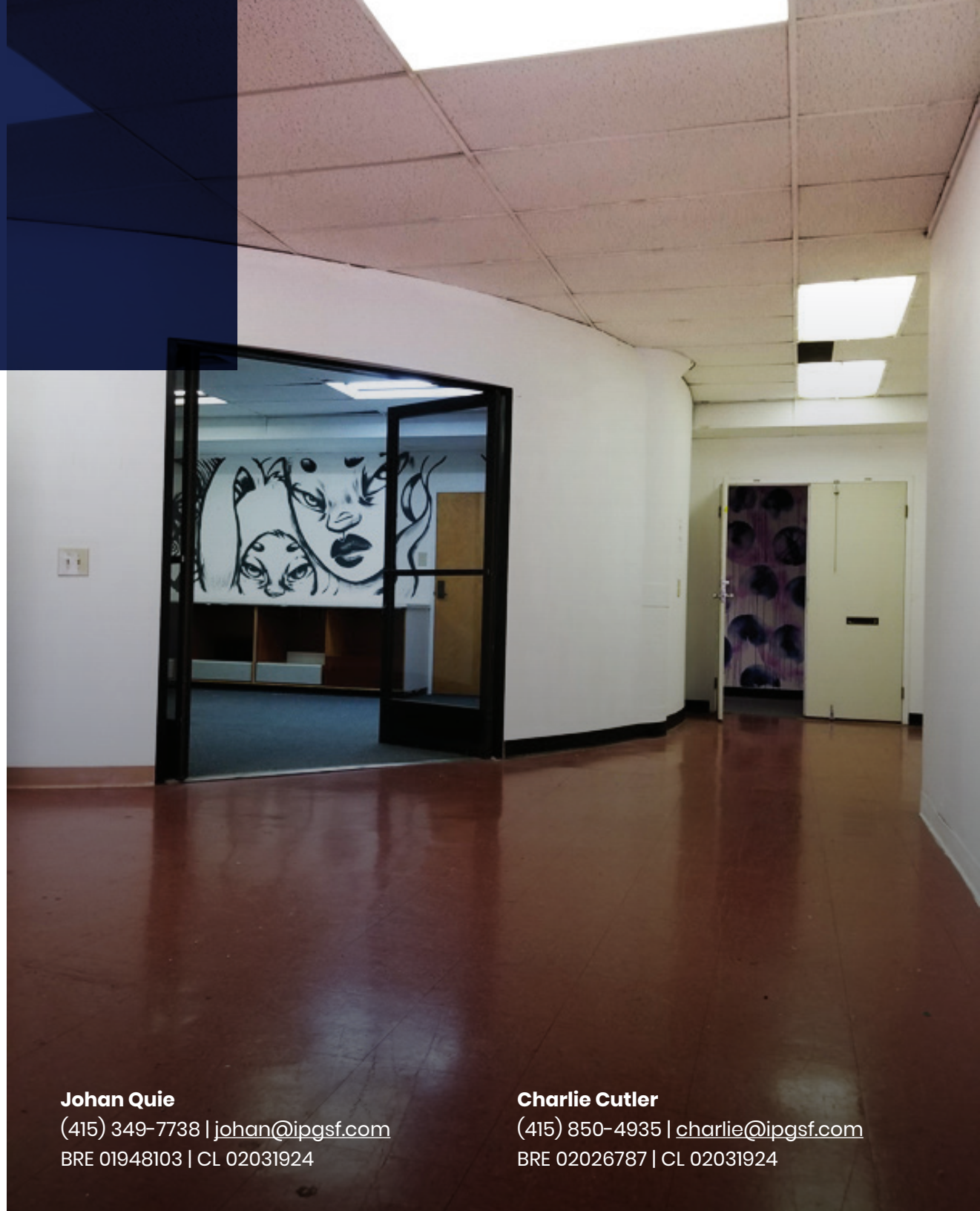
181 2nd Street, San Francisco, CA
www.ipgsf.com | CL 02031924

Johan Quie

(415) 349-7738 | johan@ipgsf.com
BRE 01948103 | CL 02031924

Charlie Cutler

(415) 850-4935 | charlie@ipgsf.com
BRE 02026787 | CL 02031924



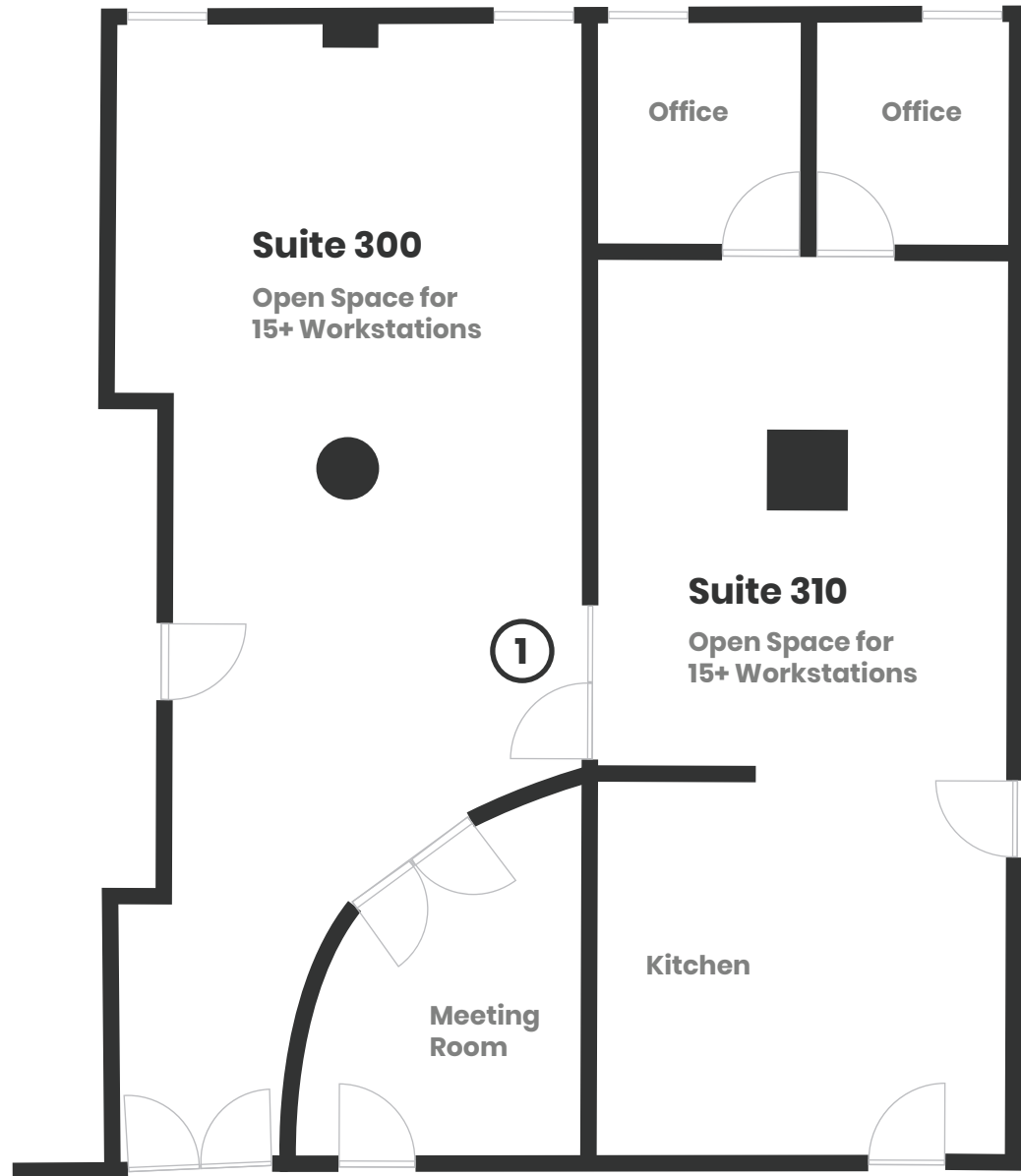
1540 Market Street

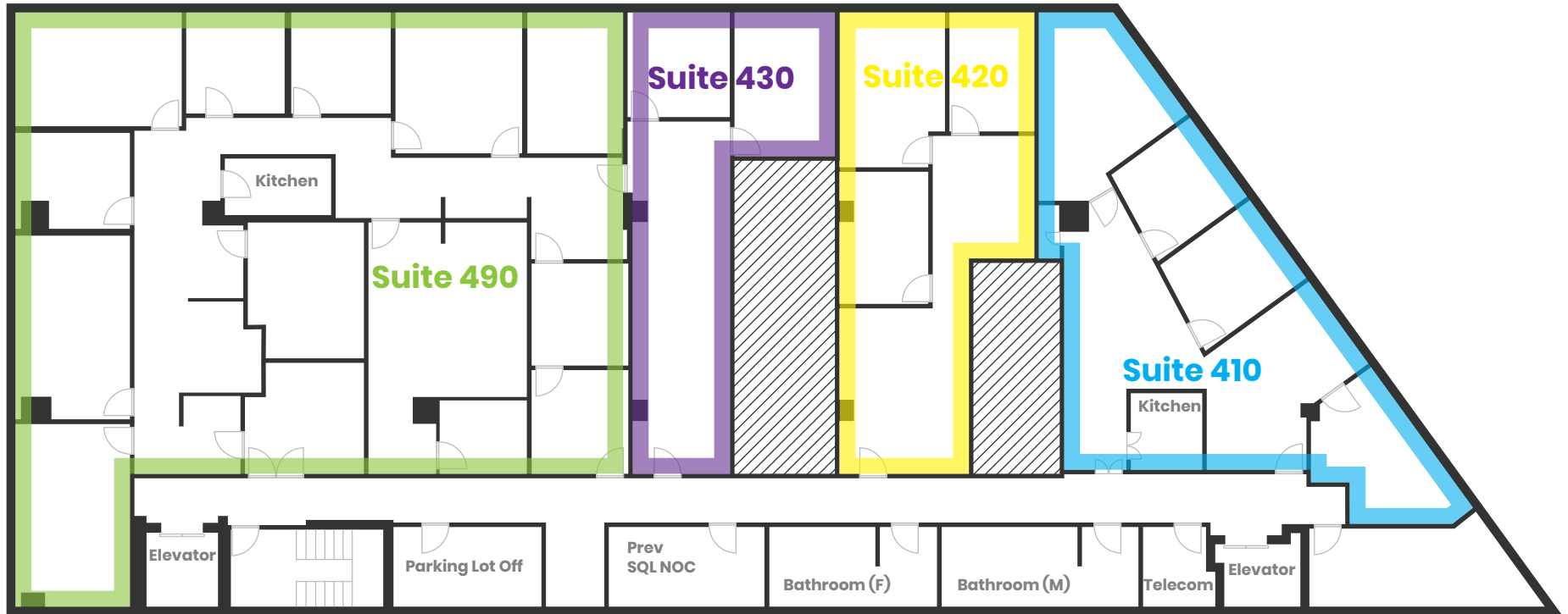
Third Floor Options

- **Suite 300:** +/- 1750sqft
- **Suite 310:** +/- 1850sqft

* Suites 300 & 310 can be connected for 3600sf contiguous space

① Doorway: Can be interconnected or separate





1540 Market Street

- **Suite 490:** 4475sf - Ten offices, Two conference rooms
- **Suite 430:** 1051sf - Open workspace, Two offices
- **Suite 420:** 1260sf - Three offices, reception
- **Suite 410:** 1600sf - Four offices, reception

* Suites 490 & 430 can be connected for 5526sf contiguous space

* Suites 410 & 420 can be connected for 2860sf contiguous space

Innovation Properties Group
181 2nd Street, San Francisco, CA
www.ipgsf.com | CL 02031924

Johan Quie
(415) 349-7738 | johan@ipgsf.com
BRE 01948103 | CL 02031924

Charlie Cutler
(415) 850-4935 | charlie@ipgsf.com
BRE 02026787 | CL 02031924



1540 Market Street



Innovation Properties Group
181 2nd Street, San Francisco, CA
www.ipgsf.com | CL 02031924

Johan Quie
(415) 349-7738 | johan@ipgsf.com
BRE 01948103 | CL 02031924

Charlie Cutler
(415) 850-4935 | charlie@ipgsf.com
BRE 02026787 | CL 02031924