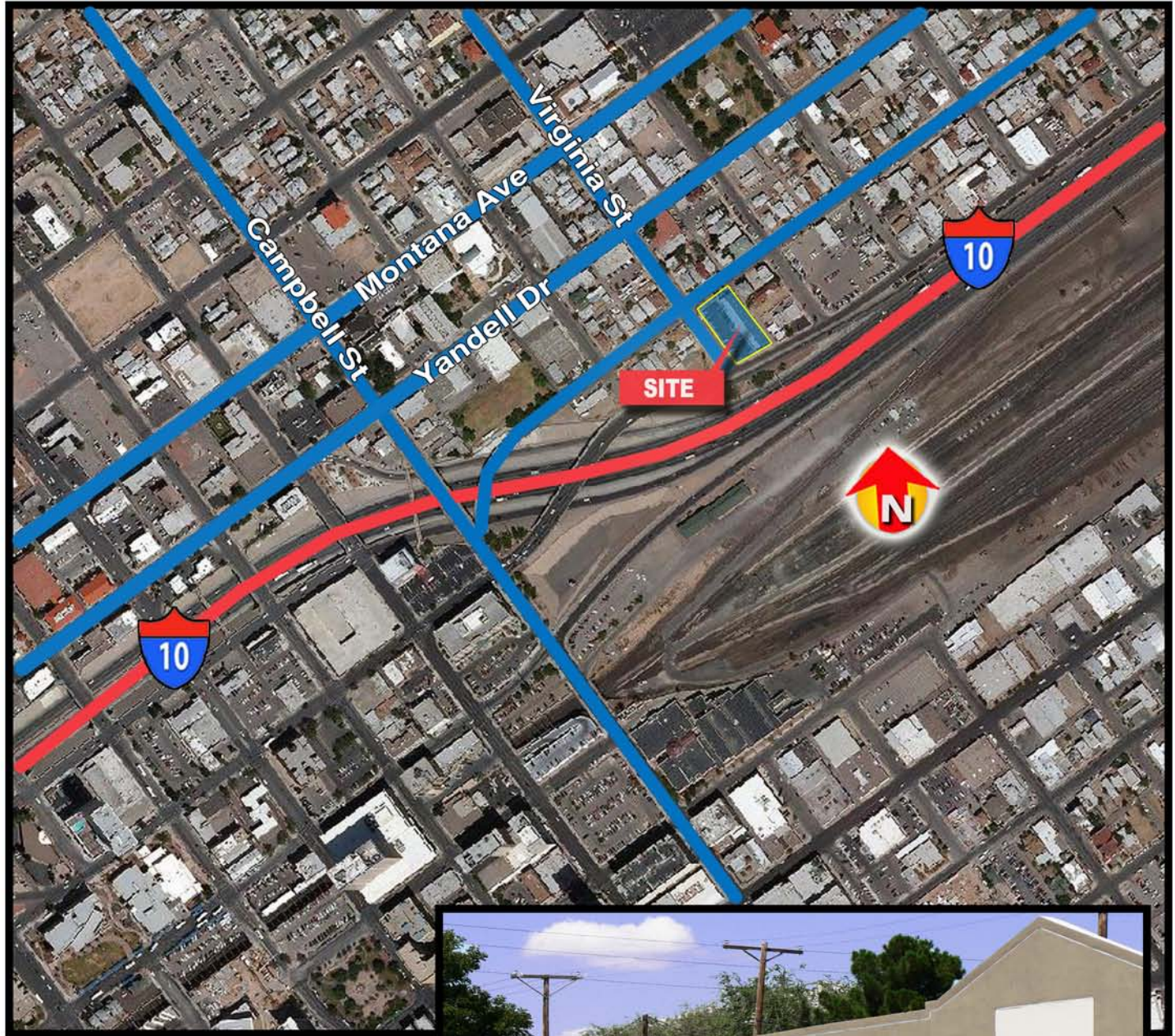




MIMCO INC.

Commercial Real Estate Management & Investments

DOWNTOWN BUSINESS PARK 800 Wyoming El Paso, TX



Scott Walker (915) 342-1203
swalker@mimcoelp.com
Michael Pace (915) 342-1204
mpace@mimcoelp.com
JP Rindt (915) 342-1205
jrindt@mimcoelp.com
(915) 779 - 6500

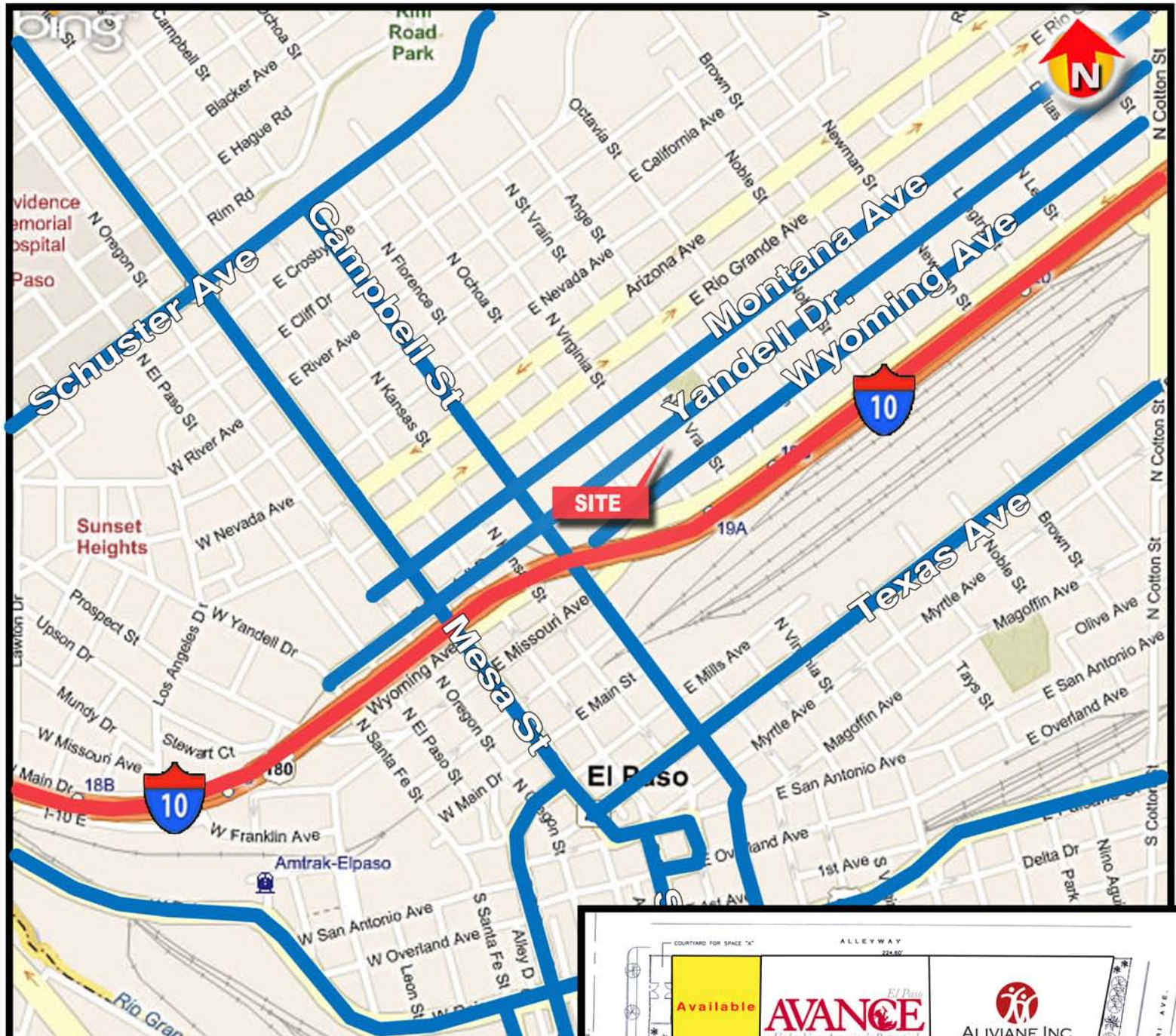


www.mimcoinc.com

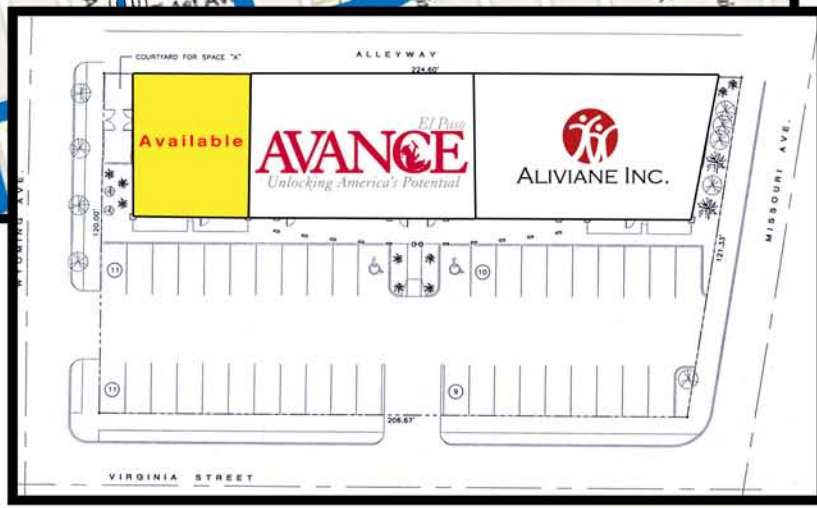
DOWNTOWN BUSINESS PARK

800 Wyoming

El Paso, TX



Available / Size	Lease Rate	
Suite A / 2,000 SF	\$1,675per month	
Taxes, Insurance	\$2.25 per SF	
Zoning / Area	C-4/ Central	
Traffic Counts	Kansas	12,279 Cars/Day
(2001 Study)	Wyoming	14,369 Cars/Day
Demographics (2010 Estimate)	1 mile Radius	3 mile
Population	22,827	67,481
Avg. HH Income	\$23,773	\$30,796



*All information contained herein has been obtained from sources deemed reliable and is submitted subject to errors, omissions, changes of terms and conditions, prior sale, lease or financing or withdrawal without notice.