

# BEACH COMMERCE PARK

## PANAMA CITY BEACH, FLORIDA

### LOTS AVAILABLE FOR SALE

#### PREMISES

- Lots ranging from 1-10 ± Acres

#### PROPERTY FEATURES

- Fully planned park subject to recorded covenants, codes, restrictions and landscaping standards
- Located on U.S. Hwy 98. Approximately 1 mile west of Highway 79 and 40 miles from Destin
- Build-to-suit and ground lease opportunities available
- Numerous commercial uses allowed
- Ideal for distribution/storage, showrooms, general offices and services
- All public utilities are available to each site
- Zoning M-1 (PCB)
- 7 Miles from Hwy 30A

Information deemed reliable, but not guaranteed.

1/10/16 JC



100 Richard Jackson Blvd  
Suite 115  
Panama City Beach, FL 32407

TEL 850.563.1500  
FAX 850.563.1504  
grahamcompany.com



#### EXCLUSIVE AGENTS

Kevin Williams, CCIM  
kevinw@grahamcompany.com  
850.348.0808

Jason Carnes  
jasonc@grahamcompany.com  
850.830.9593

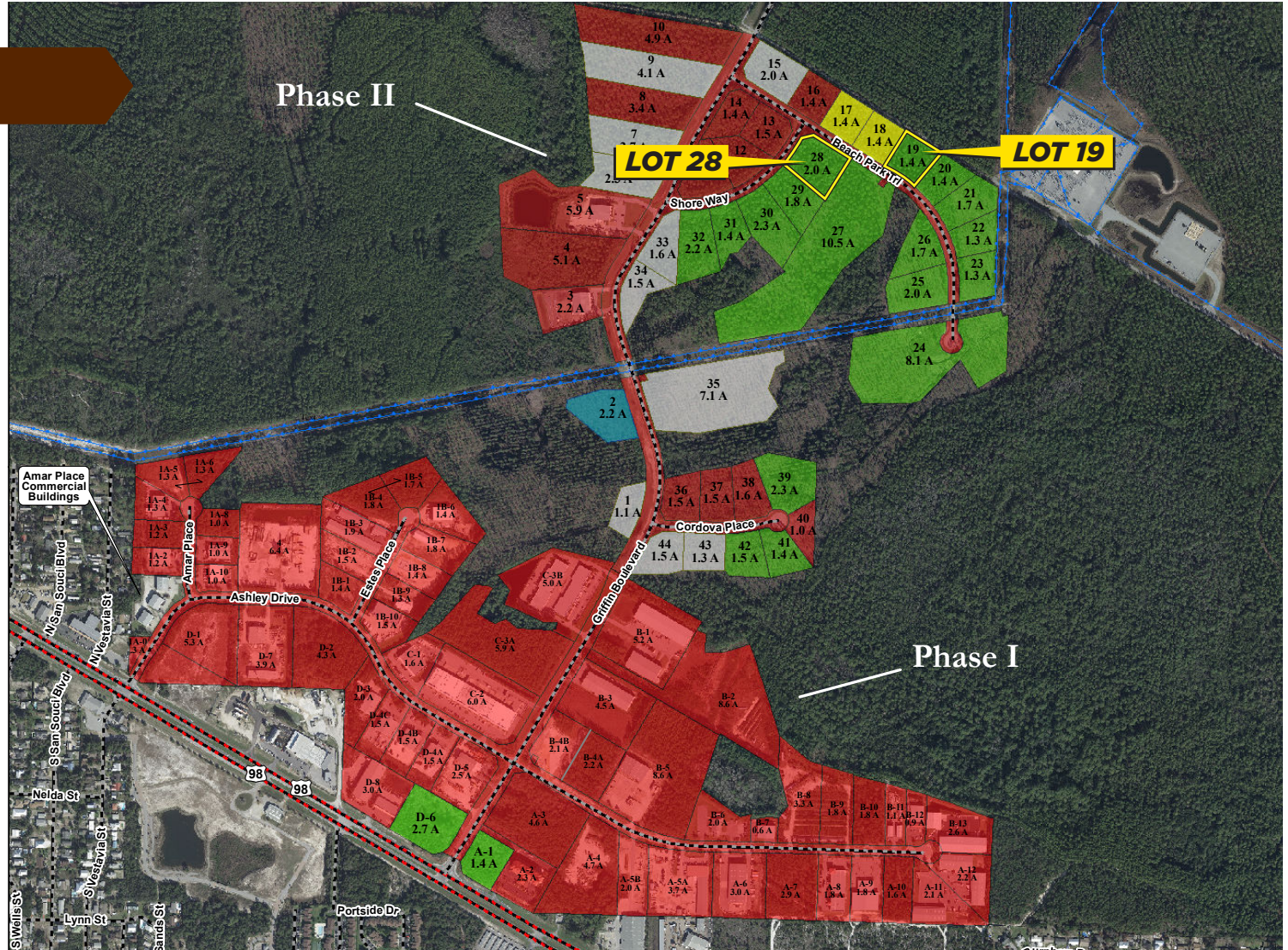
# BEACH COMMERCE PARK

## PANAMA CITY BEACH, FLORIDA

### AVAILABLE LOTS

- Lot 19**  
1.4 Acres - \$210,000
- Lot 28**  
2 Acres - \$300,000

■ Available ■ Sold



Information deemed reliable, but not guaranteed.



100 Richard Jackson Blvd  
Suite 115  
Panama City Beach, FL 32407

TEL 850.563.1500  
FAX 850.563.1504  
grahamcompany.com



#### EXCLUSIVE AGENTS

Kevin Williams, CCIM  
kevinw@grahamcompany.com  
850.348.0808

Jason Carnes  
jasonc@grahamcompany.com  
850.830.9593