

# Puget Park Building

## 122 128th St. SE | Everett

### For Lease

For more information contact:

**Daniel Hanks**  
Cell 425.422.0849  
danielhanks@cbba.com

**Jack Shannon**  
Office 425.438.8092  
Cell 425.330.2122  
jackshannon@cbba.com

Coldwell Banker  
Commercial  
1000 SE Everett Mall Wy  
Suite 201  
Everett, WA 98208

Fax (425) 710-2123



#### Property Information

Overview:	The space is available in a new retail building constructed in 2006, on the ground floor. The remainder of the building is occupied by Shawn O'Donnell's Restaurant and Irish Pub. The site is only seconds from the I-5 interchange at 128th St. Will allow signage on existing post sign bordering 128th St. Will support office, retail, or medical uses.
Available:	2,440* Rentable Square Feet
Total GBA:	10,756* SF
Height:	9' to Drop Ceiling
Lot Size:	67,082* Square Feet
Zoning:	Snohomish County PCB (Planned Community Business)
Year Built:	2006
Parking:	105 Spaces On-Site
Ratio:	9.76 Spaces per 1,000* SF
Terms:	Triple Net (NNN)
Lease Rate:	\$22.00 / SF / Year



**Distinctly Different**

\*All square footages are approximations.

The information in the enclosed materials has been provided to Broker, either by the property's owner or obtained from sources we deem reliable. Broker and the property's owner have reviewed these materials but neither party makes any representation or warrant as to the accuracy or completeness of these materials. Any indicated value of this investment is based upon assumption, projections, and estimates which are variable by nature and subject to changing conditions in the market and economy. For interested parties and potential purchasers, the accuracy of the information and value of this investment will depend on several variable factors and should be evaluated by your tax and legal advisors.

# Puget Park Building

## 122 128th St. SE | Everett

### For Lease

For more information contact:

**Daniel Hanks**  
Cell 425.422.0849  
danielhanks@cbba.com

**Jack Shannon**  
Office 425.438.8092  
Cell 425.330.2122  
jackshannon@cbba.com

Coldwell Banker  
Commercial  
1000 SE Everett Mall Wy  
Suite 201  
Everett, WA 98208

Fax (425) 710-2123



**Distinctly Different**

\*All square footages are approximations.

The information in the enclosed materials has been provided to Broker, either by the property's owner or obtained from sources we deem reliable. Broker and the property's owner have reviewed these materials but neither party makes any representation or warrant as to the accuracy or completeness of these materials. Any indicated value of this investment is based upon assumption, projections, and estimates which are variable by nature and subject to changing conditions in the market and economy. For interested parties and potential purchasers, the accuracy of the information and value of this investment will depend on several variable factors and should be evaluated by your tax and legal advisors.

# Puget Park Building

## 122 128th St. SE | Everett

### For Lease

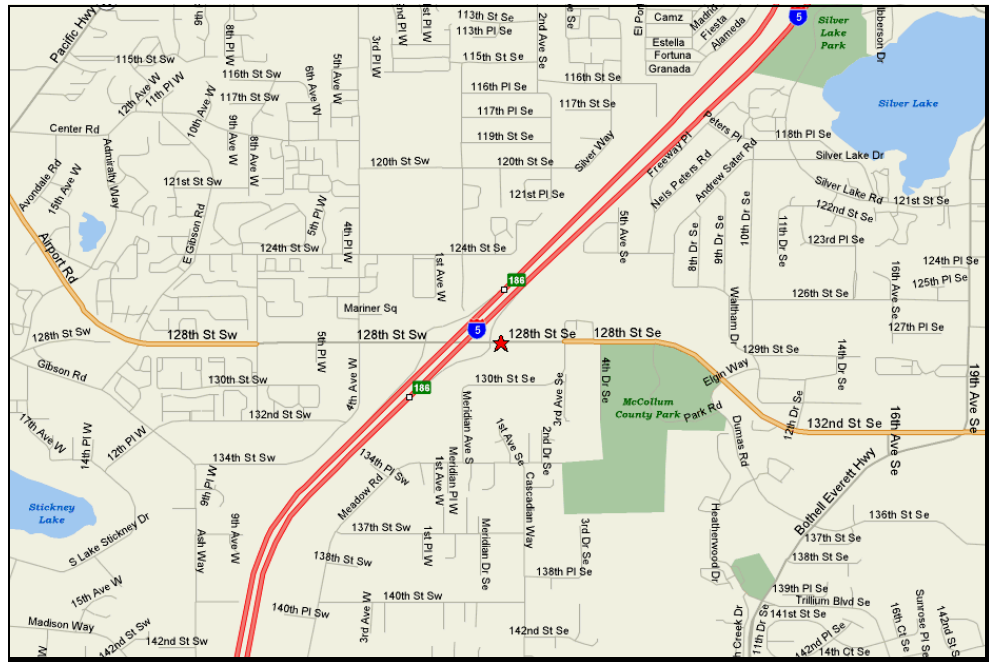
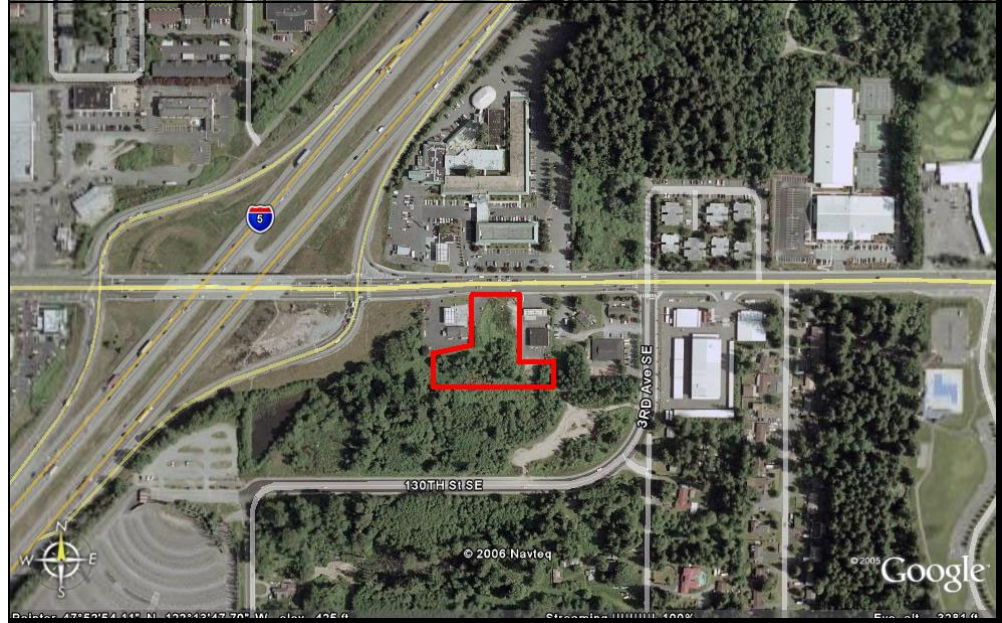
For more information contact:

**Daniel Hanks**  
Cell 425.422.0849  
danielhanks@cbba.com

**Jack Shannon**  
Office 425.438.8092  
Cell 425.330.2122  
jackshannon@cbba.com

Coldwell Banker  
Commercial  
1000 SE Everett Mall Wy  
Suite 201  
Everett, WA 98208

Fax (425) 710-2123



**Distinctly Different**

\*All square footages are approximations.

The information in the enclosed materials has been provided to Broker, either by the property's owner or obtained from sources we deem reliable. Broker and the property's owner have reviewed these materials but neither party makes any representation or warrant as to the accuracy or completeness of these materials. Any indicated value of this investment is based upon assumption, projections, and estimates which are variable by nature and subject to changing conditions in the market and economy. For interested parties and potential purchasers, the accuracy of the information and value of this investment will depend on several variable factors and should be evaluated by your tax and legal advisors.