

HAIR SALON/SPA SPACE for LEASE

3,787 SF

Lewisville, TX



101 East Southwest Parkway, Suite 115

- Location:** NEC of S.H.121 Business & Southwest Parkway – in the “elbow” of the Center!
(Former tenant was a Barber College).
- Parking:** 5/1000
- Traffic:** **38,816 CPD on S.H.121** (Dallas District Traffic Map - 2015).
- Base Rent:** **\$7.15/SF** + NNN's.

For further information contact: **Rich Muller**



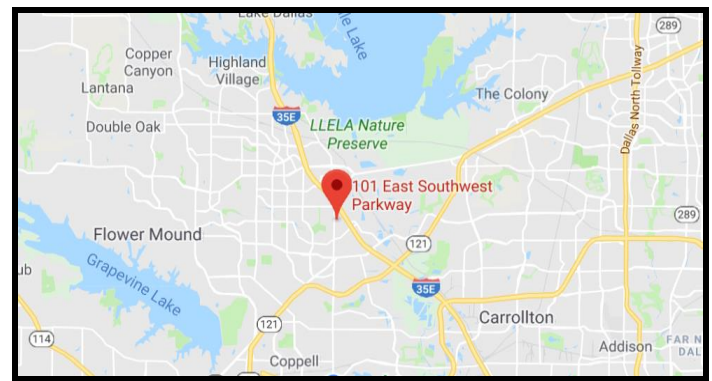
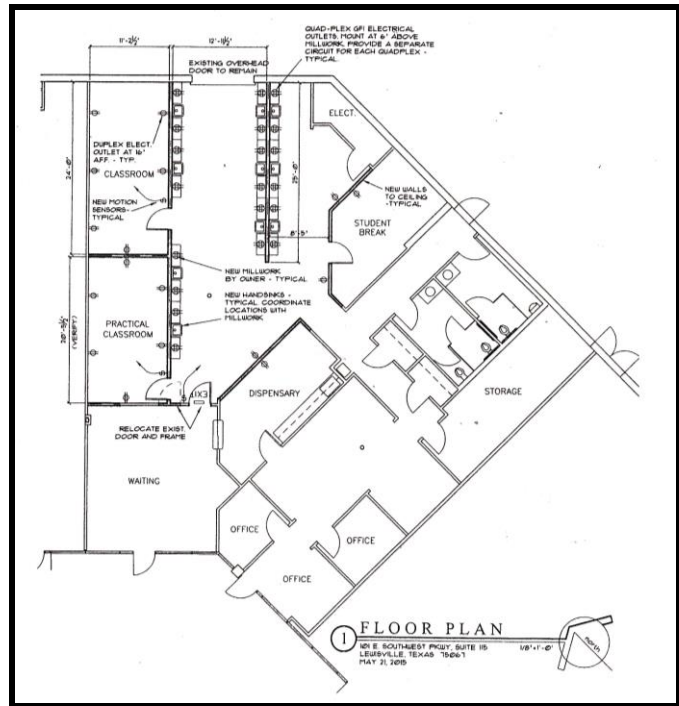
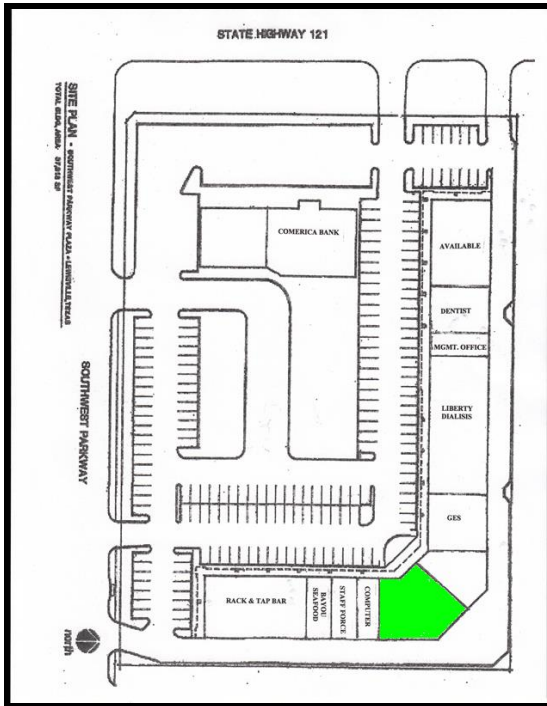
Vintage Realty

2980 Long Prairie Rd., Suite D

Flower Mound, TX 75022

972/355-0669 or Fax 972/355-5477

Email: Rich@VintageRealty.net or, www.VintageRealty.net



This information is believed to be accurate, but no representation or warranty, express or implied, as to its accuracy or completeness is made by any party. The presentation of this property is submitted subject to errors, omissions, change of price or prior sale or lease, or withdrawal without notice.