



RETAIL SPACE FOR LEASE



Belgate Plaza
1105 Bellevue
Way NE
Bellevue, WA 98004

FEATURES

- 1,280 SF retail at \$36.00/SF, NNN
- Located just 2 blocks north of Bellevue Square along Bellevue Way
- Exposure to over 30K vehicles per day

SUHRCO manages a diverse portfolio of commercial and multifamily residential properties in the Puget Sound region. Established in 1973, the company employs more than 300 experienced professionals dedicated to meeting the management, leasing and brokerage needs of building owners, tenants, and condominium/homeowner association boards and owners.

Contact:

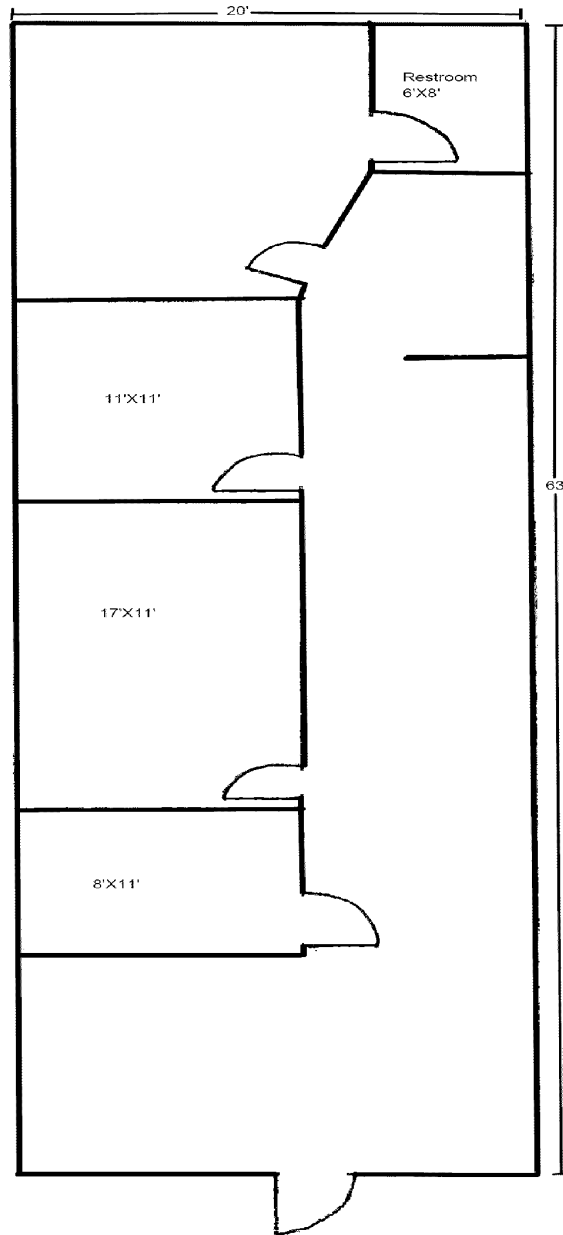
Peter Townsend, RPA® Email: petert@suhrco.com
Vanessa Murphy, RPA® Email: vanessam@suhrco.com
T: (425) 455-1950 F: (425) 462-1943
2010 156th Avenue NE, Suite 100, Bellevue, WA 98007

SUHRCO Management, Inc., AMO®



RETAIL SPACE FOR LEASE

Belgate Plaza
1105 Bellevue Way NE, Space A-3
1,280 SF



Approximate Dimensions