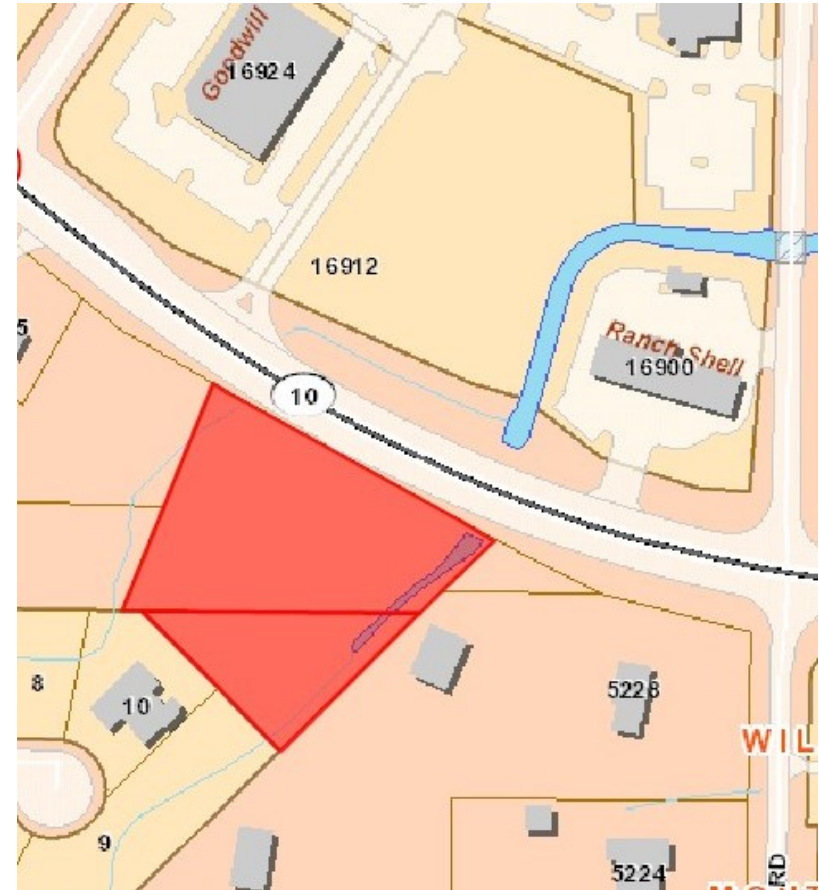


Cantrell Road - Near Ranch Drive, Little Rock, AR

1.32 Acres

- For Sale: \$504,000 \$9.25/SF usable
- Two parcels totaling 1.32 acres (1.25± acres usable)
- Currently Zoned POD – O1 uses allowed
- 485 ft. frontage on Cantrell Road
- Traffic count of 27,000 vpd on Cantrell Road
- 4.9 miles from I-430/Cantrell interchange
- Neighboring businesses include:
Future Bank of the Ozarks Headquarters, Goodwill,
Pinnacle View Middle School, Don Roberts Elementary
School, Ark Baptist High School, churches, banks,
retail centers & restaurants
- Ideal site for medical office or financial services



For more information contact:

Wes Martin | WMartin@HathawayGroup.com | Direct 501.978.4971 | Cell 501.765.1585

Reed Billings | Reed@HathawayGroup.com | Direct 501.978.4975 | Cell 901.604.8690

