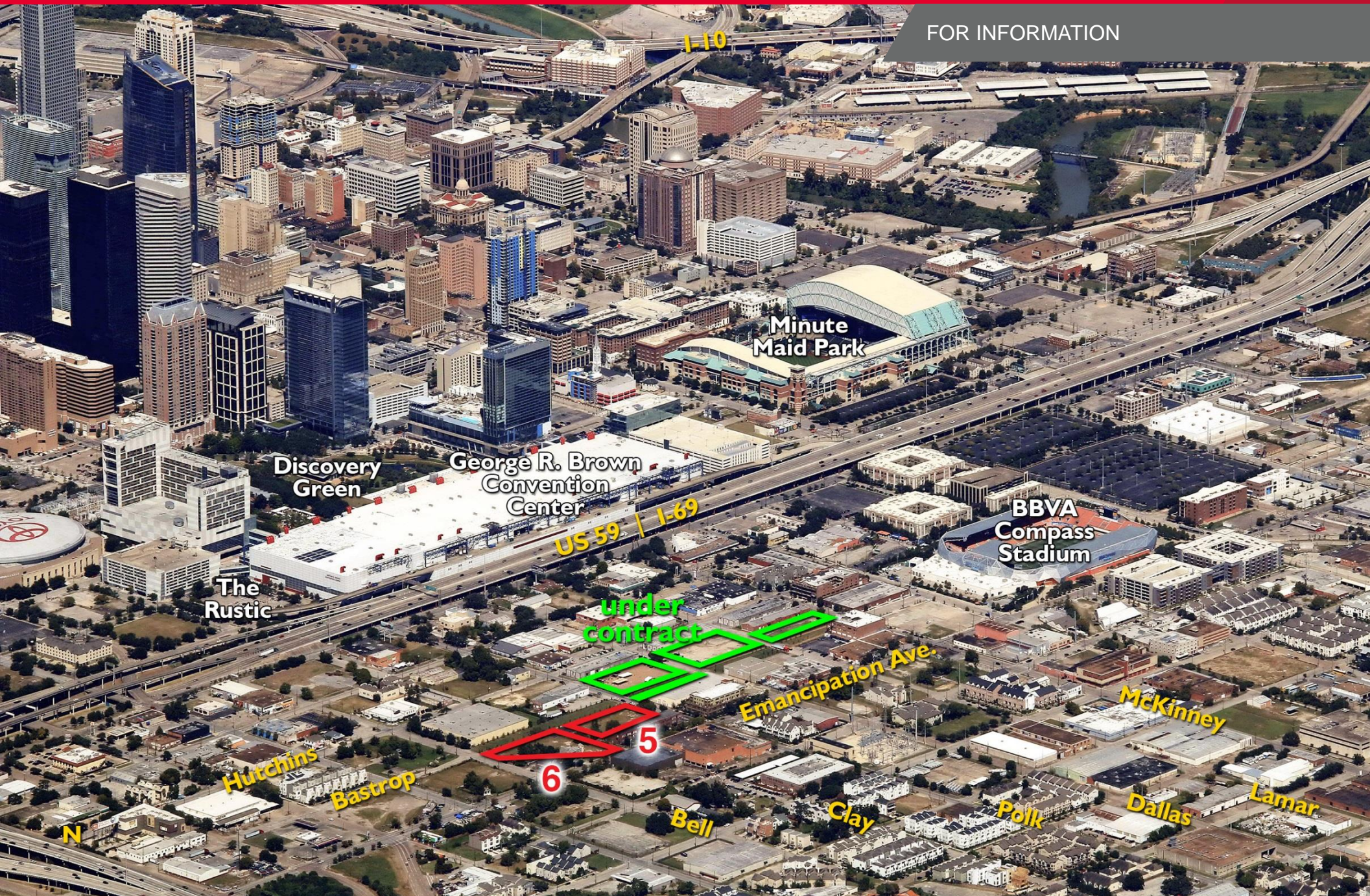

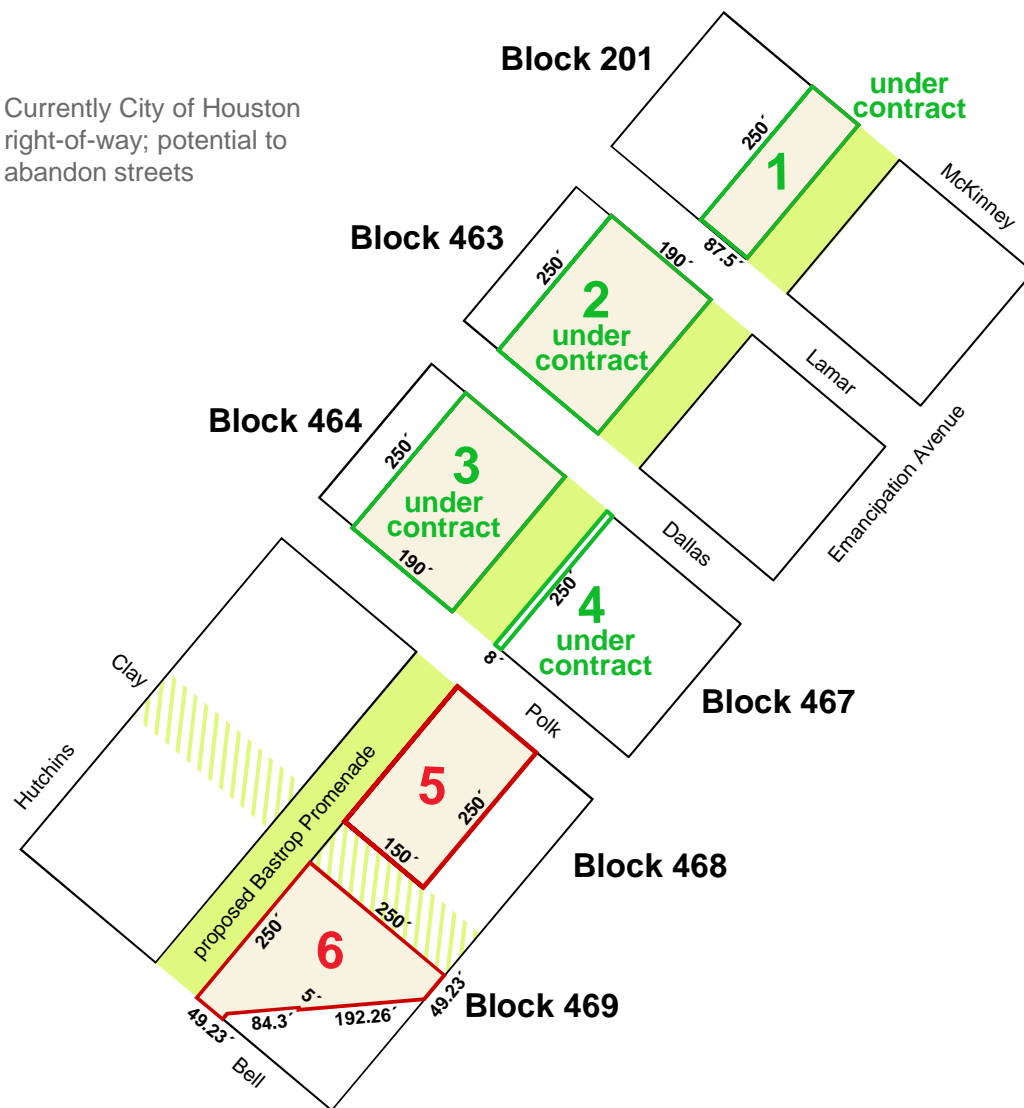


FOR INFORMATION



±1.78 Acres – Two Partial Blocks in EADO Near BBVA Compass Stadium

 Currently City of Houston right-of-way; potential to abandon streets

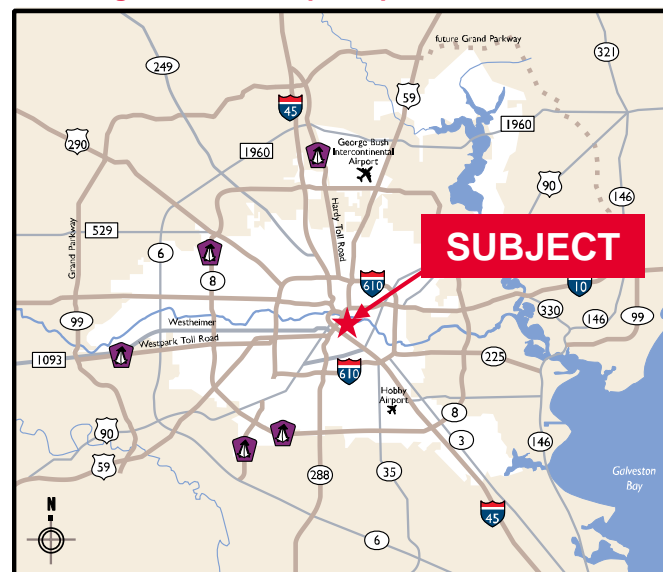


Located in the heart of East Downtown (EaDo) district. Within walking distance of Minute Maid Park, Discovery Green, The George R. Brown Convention Center, Toyota Center, and BBVA Compass Stadium

- Tract 1 - ±21,875 sq. ft. (±0.5022 acres – under contract)
- Tract 2 - ±47,500 sq. ft. (±1.0904 acres – under contract)
- Tract 3 - ±47,500 sq. ft. (±1.0904 acres – under contract)
- Tract 4 - ±2,000 sq. ft. (±0.0459 acres – under contract)
- Tract 5 - ±37,500 sq. ft. (±0.8609 acres)
- Tract 6 - ±40,450 sq. ft. (±0.9286 acres)

- Key Map 493R
- Cooperating brokers protected

• **Asking Price: \$90.00 per sq. ft.**



For more information, contact:

Jeff G. Peden, SIOR
(713) 963 2880
jeff.peden@cushwake.com

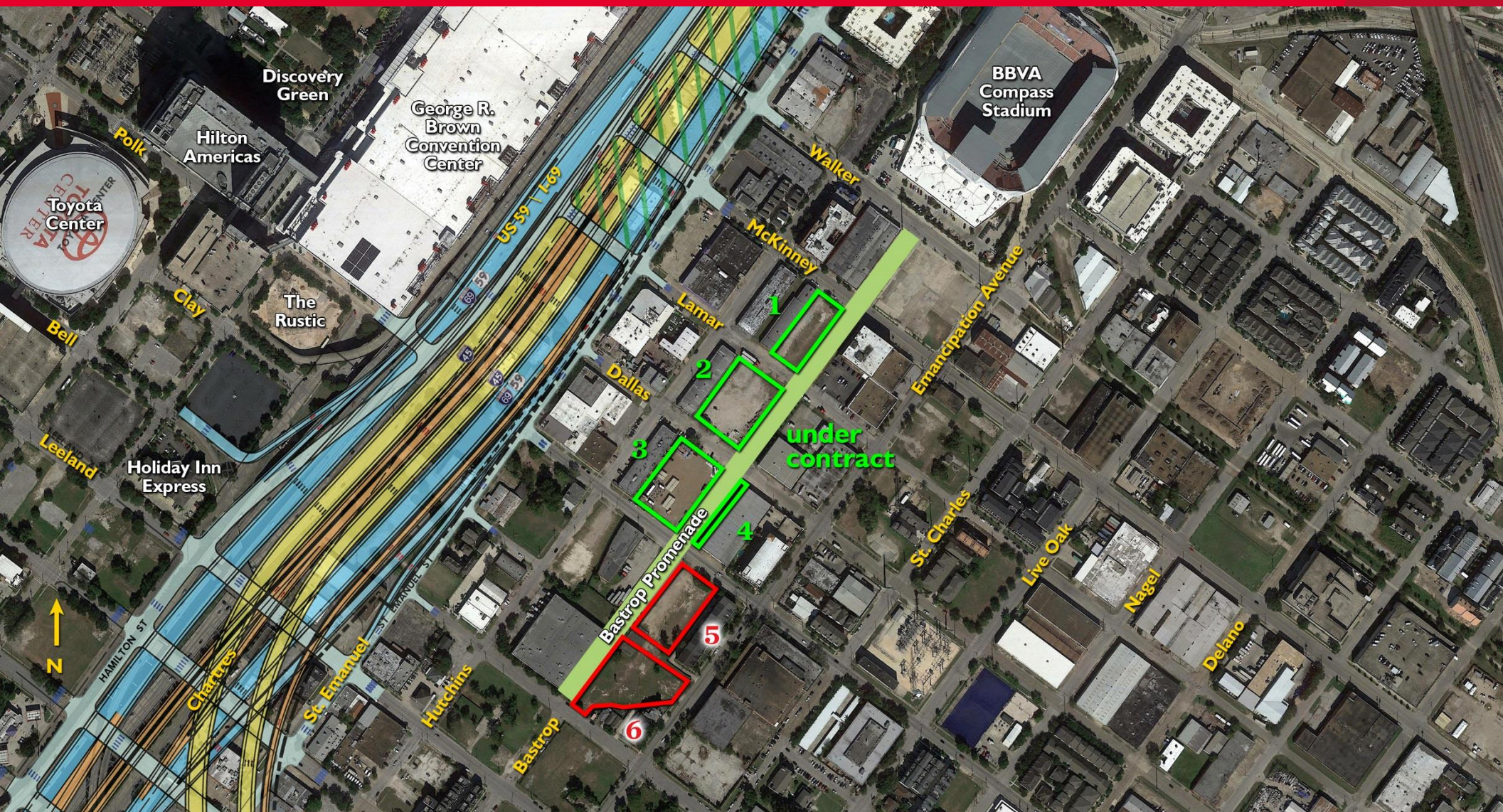
David L. Cook, SIOR, CRE
(713) 963 2888
david.cook@cushwake.com

Scott E. Miller
(713) 963 2835
scott.miller@cushwake.com

Cushman & Wakefield
Licensed Real Estate Brokers
1330 Post Oak Boulevard | Suite 2700
Houston, TX 77056
www.cushmanwakefield.com



±1.78 Acres – Two Partial Blocks in EADO Near BBVA Compass Stadium



For more information, contact:

Jeff G. Peden, SIOR
(713) 963 2880
jeff.peden@cushwake.com

David L. Cook, SIOR, CRE
(713) 963 2888
david.cook@cushwake.com

Scott E. Miller
(713) 963 2835
scott.miller@cushwake.com

Cushman & Wakefield
Licensed Real Estate Brokers
1330 Post Oak Boulevard | Suite 2700
Houston, TX 77056
www.cushmanwakefield.com

Cushman & Wakefield Copyright 2018. No warranty or representation, express or implied, is made to the accuracy or completeness of the information contained herein, and same is submitted subject to errors, omissions, change of price, rental or other conditions, withdrawal without notice, and to any special listing conditions imposed by the property owner(s). As applicable, we make no representation as to the condition of the property (or properties) in question.

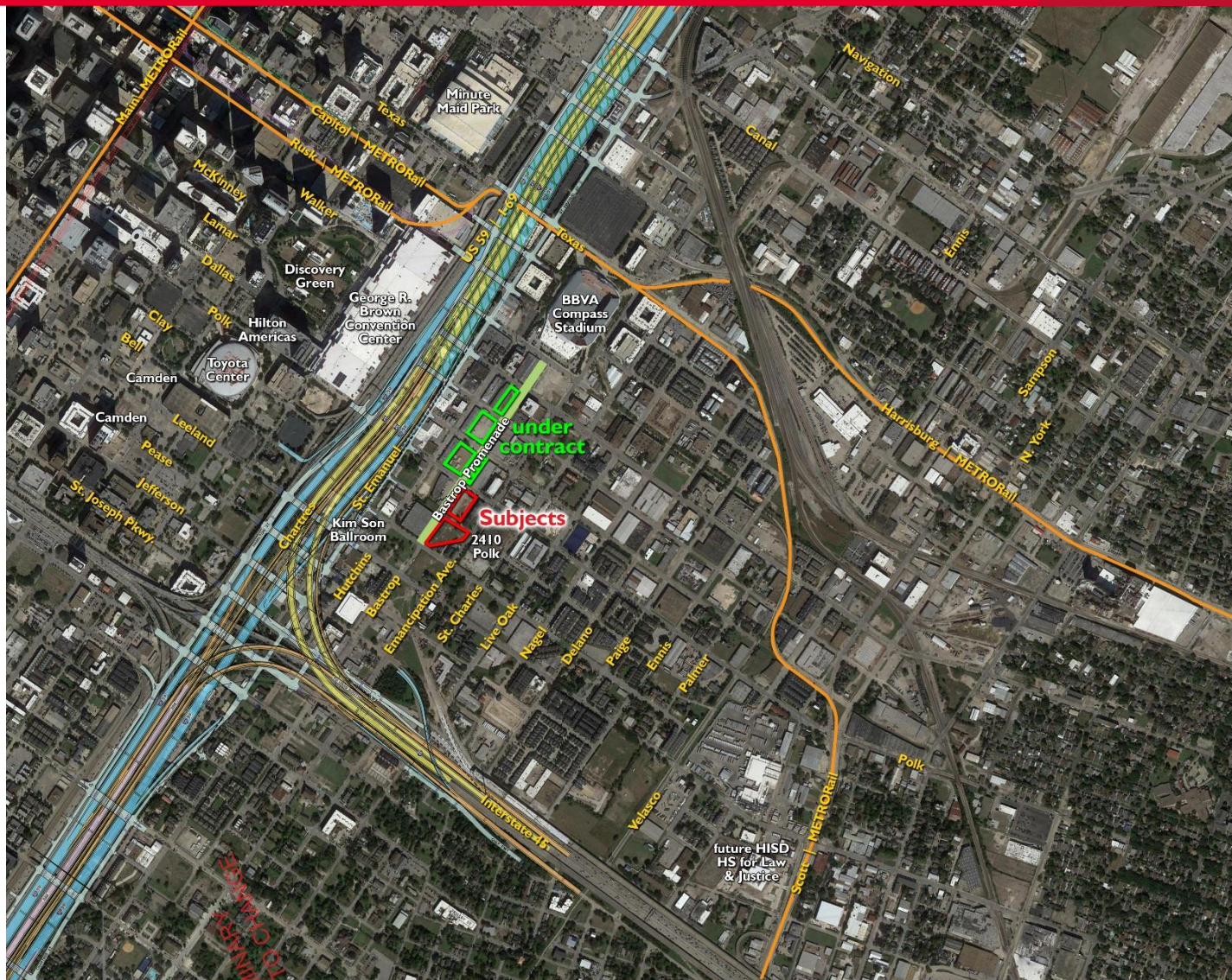


±1.78 Acres – Two Partial Blocks in EADO Near BBVA Compass Stadium

EaDo is well situated near some of Houston's biggest employment centers: Downtown, the Texas Medical Center, and the Houston Ship Channel.

The divide between EADO and the CBD will be eliminated when the future \$7+ billion project along US59/I69 is completed. The planned sunken freeway, on the east side of the George R. Brown Convention Center and Minute Maid Park, will provide added pedestrian walkways, as well as the potential for parks and green space.

The area offers restaurants such as Kim Son, Brothers Taco House, District 7 Grill, The Eighth Wonder Brewery, China Garden, Super Happy Funland and The Cajun Stop, and nearly 10,000 new residents and 880 new units planned.



For more information, contact:

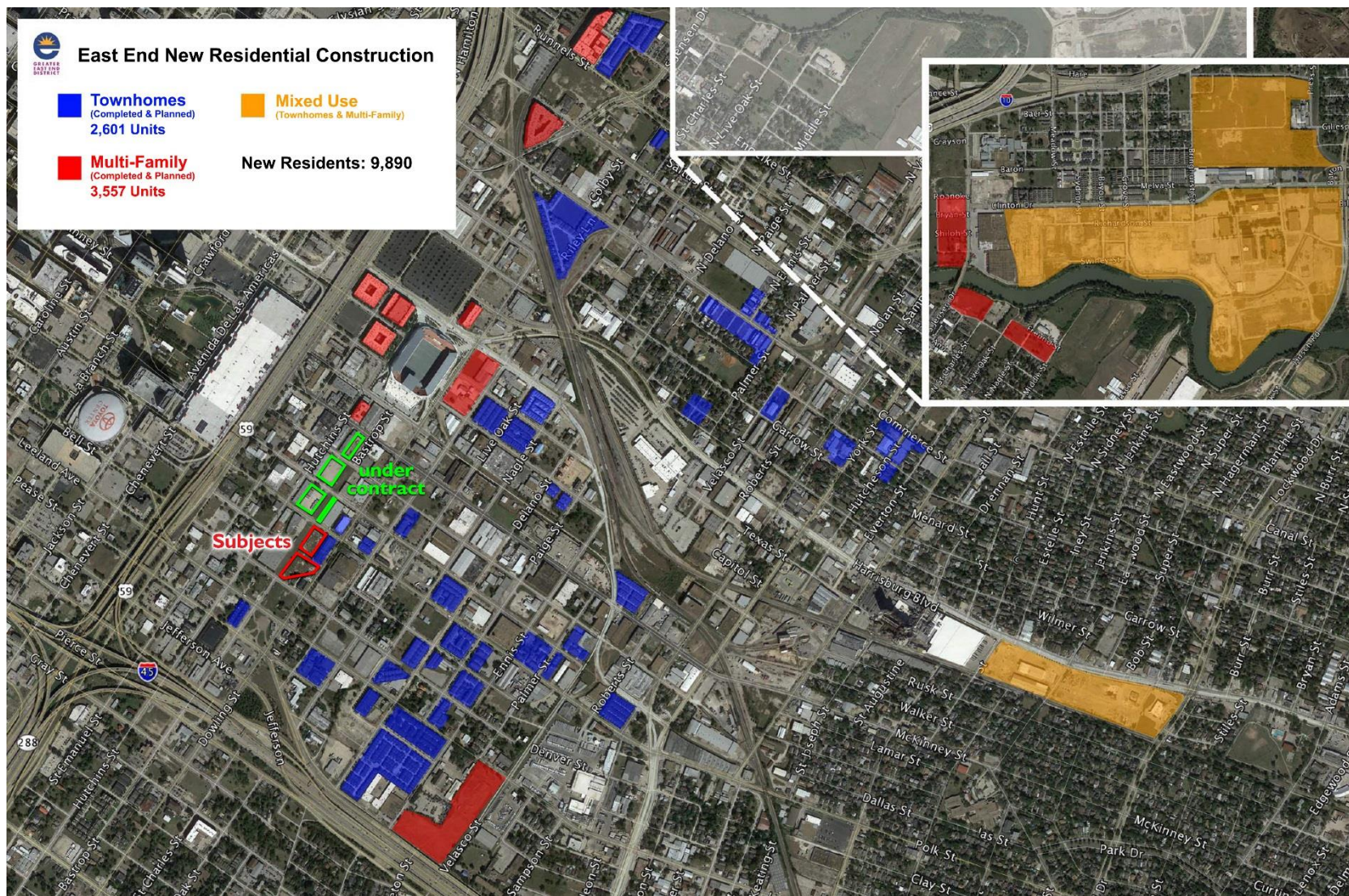
Jeff G. Peden, SIOR
(713) 963 2880
jeff.peden@cushwake.com

David L. Cook, SIOR, CRE
(713) 963 2888
david.cook@cushwake.com

Scott E. Miller
(713) 963 2835
scott.miller@cushwake.com

Cushman & Wakefield
Licensed Real Estate Brokers
1330 Post Oak Boulevard | Suite 2700
Houston, TX 77056
www.cushmanwakefield.com

±1.78 Acres – Two Partial Blocks in EADO Near BBVA Compass Stadium



For more information, contact:

Jeff G. Peden, SIOR
(713) 963 2880
jeff.peden@cushwake.com

David L. Cook, SIOR, CRE
(713) 963 2888
david.cook@cushwake.com

Scott E. Miller
(713) 963 2835
scott.miller@cushwake.com

Cushman & Wakefield
Licensed Real Estate Brokers
1330 Post Oak Boulevard | Suite 2700
Houston, TX 77056
www.cushmanwakefield.com