



LAND FOR SALE

FOR LEASE BUILD TO SUIT / PRICE NEGOTIABLE

10340 Royal Palm Blvd, Coral Springs, FL 33071

- Vacant Lot
- Zoning B-2: Store / Retail / Restaurants / Educational / Schools / Banks / Churches
- Tax ID 4841 21 36 0016

TRAFFIC COUNT PER DAY

- 25,000 Coral Springs Dr
- 51,000 University Dr
- 22,000 Royal Palm Blvd
-

POPULATION RADIUS

- 1 Mile 17,790
- 2 Mile 154,995
- 3 Mile 350,000
- Population Growth 6%

45,887 ± SQ FT
\$1,330,723



JOE PELAYO / CCIM, SIOR
 ✉ trec@joepelayo.com
 ☎ 954.224.8773
 🏠 954.341.3294



RICHARD D. ABRAHAM / CCIM, SIOR
 ✉ rdabraham1@gmail.com
 🌐 www.abrahamassociates.com
 ☎ 954.646.4000



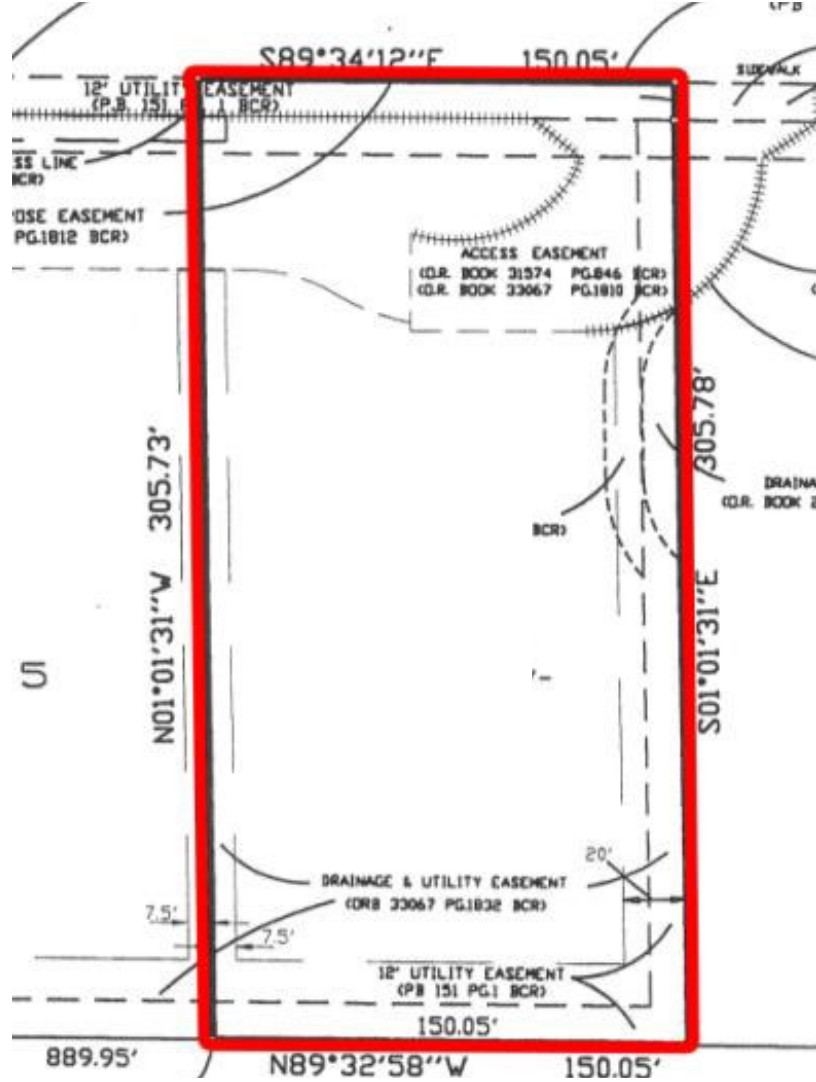
Total Real Estate Consultants Inc.
www.trecfl.com

NOTE: This offering subject to errors, omissions, prior sales or withdrawal without notice

LAND FOR SALE + INVESTMENT

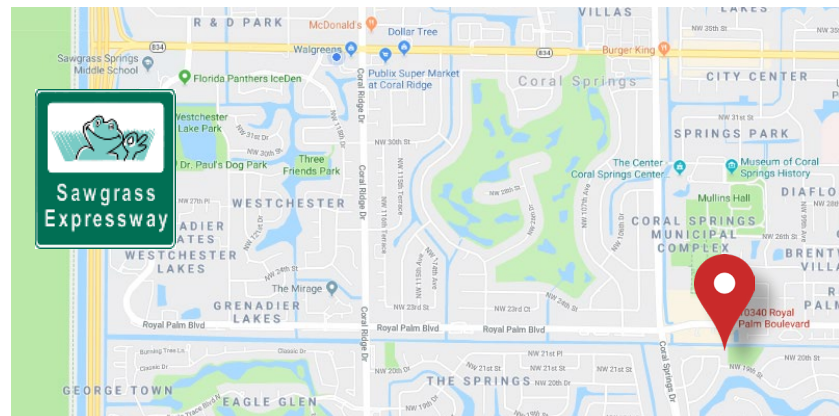
RETAIL, OFFICES, FAST FOOD, STORES, BANKS, CHURCHES

10340 Royal Palm Blvd, Coral Springs, FL 33071



REPORTS

- Specific Tapestry Lifestyle
- Specific Demographic Population
- Available on Request



JOE PELAYO / CCIM, SIOR

✉ trec@joepelayo.com

☎ 954.224.8773

🏠 954.341.3294



CERTIFIED
COMMERCIAL
INVESTMENT
MEMBER



SIOR

RICHARD D. ABRAHAM / CCIM, SIOR

✉ rdabraham1@gmail.com

🌐 www.abrahamassociates.com

☎ 954.646.4000



Total Real Estate
Consultants Inc.
www.trecfl.com

NOTE: This offering subject to errors, omissions, prior sales or withdrawal without notice