

±10 Acres For Sale

SEC Seaton Ave and Perry St, Unincorporated Riverside County, CA

EXCELLENT INDUSTRIAL DEVELOPMENT OPPORTUNITY



KIDDER MATHEWS

LR Sanders
Senior Vice President
Irs@kiddermathews.com
858.369.3078 | LIC #00480272



COLLIERS INTERNATIONAL

Scott Sanders, SIOR
First Vice President
scott.sanders@colliers.com
909.937.6322 | LIC #01481466



SEC Seaton Ave and Perry St

±10 ACRE INDUSTRIAL
LAND DEVELOPMENT
OPPORTUNITY

UNINCORPORATED
RIVERSIDE COUNTY, CA

Investment Highlights

Excellent industrial development or user opportunity

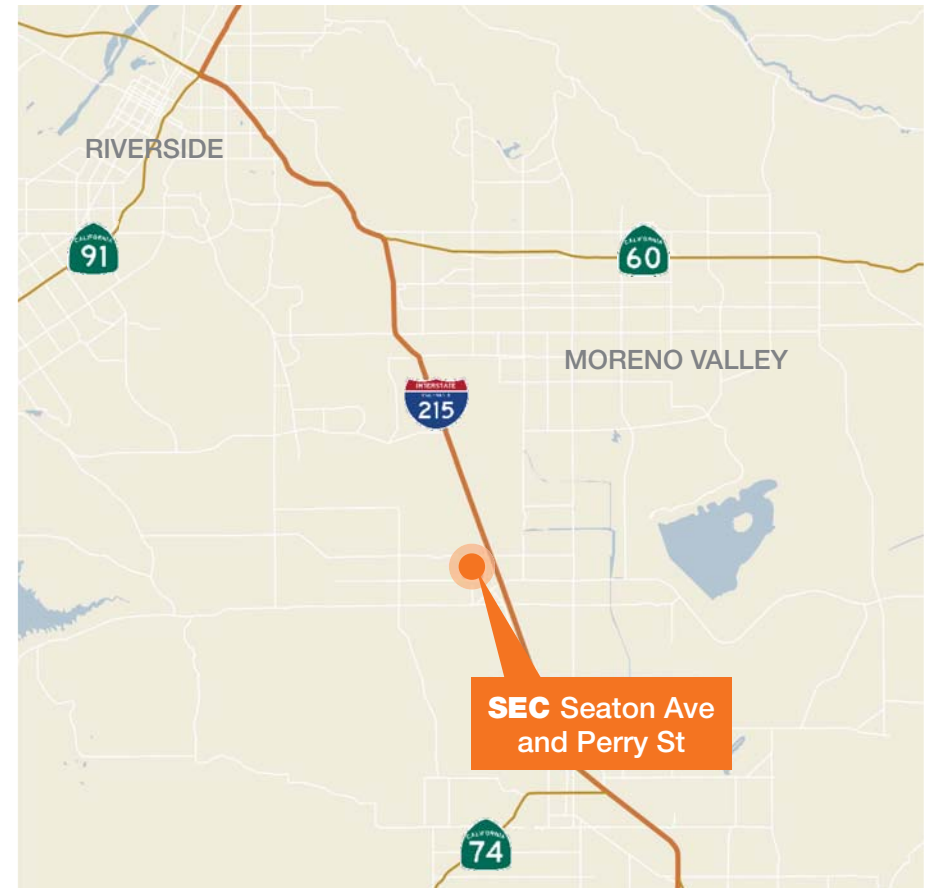
Immediate access to the I-215 Freeway via Cajalco Rd

Directly adjacent to the 317-acre planned 6,000,000 SF Majestic Freeway Business Center

APN 314-130-007

Utilities: Water and power in Seaton Ave

The ±10 acre land site is located in the Inland Empire. This is an ideal industrial development or user opportunity with close proximity to I-215, SR-60, and minutes away from March AFB Inland Port.



KIDDER MATHEWS

LR Sanders
Senior Vice President
lrs@kiddermathews.com
858.369.3078 | LIC #00480272



COLLIERS INTERNATIONAL

Scott Sanders, SIOR
First Vice President
scott.sanders@colliers.com
909.937.6322 | LIC #01481466

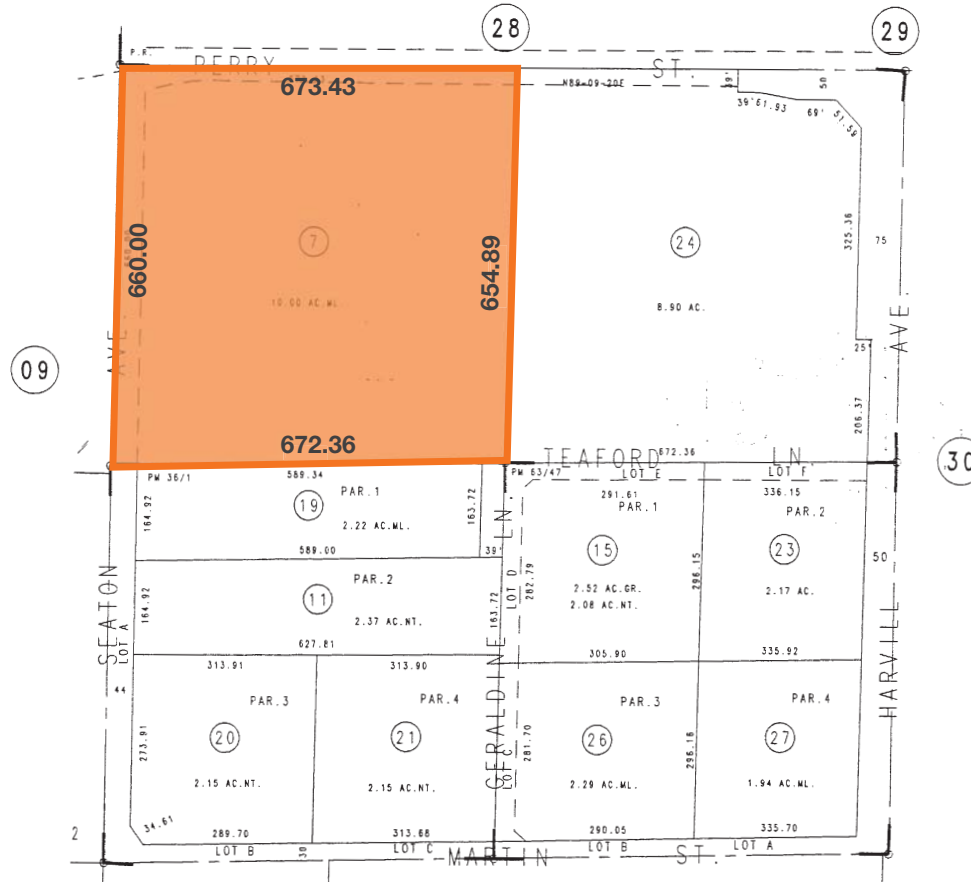


SEC Seaton Ave and Perry St

±10 ACRE INDUSTRIAL
LAND DEVELOPMENT
OPPORTUNITY

UNINCORPORATED
RIVERSIDE COUNTY, CA

Parcel Map



KIDDER MATHEWS

LR Sanders
Senior Vice President
Irs@kiddermathews.com
858.369.3078 | LIC #00480272



COLLIERS INTERNATIONAL

Scott Sanders, SIOR
First Vice President
scott.sanders@colliers.com
909.937.6322 | LIC #01481466



SEC Seaton Ave and Perry St

±10 ACRE INDUSTRIAL
LAND DEVELOPMENT
OPPORTUNITY

UNINCORPORATED
RIVERSIDE COUNTY, CA



KIDDER MATHEWS

LR Sanders
Senior Vice President
Irs@kiddermathews.com
858.369.3078 | LIC #00480272



COLLIERS INTERNATIONAL

Scott Sanders, SIOR
First Vice President
scott.sanders@colliers.com
909.937.6322 | LIC #01481466

