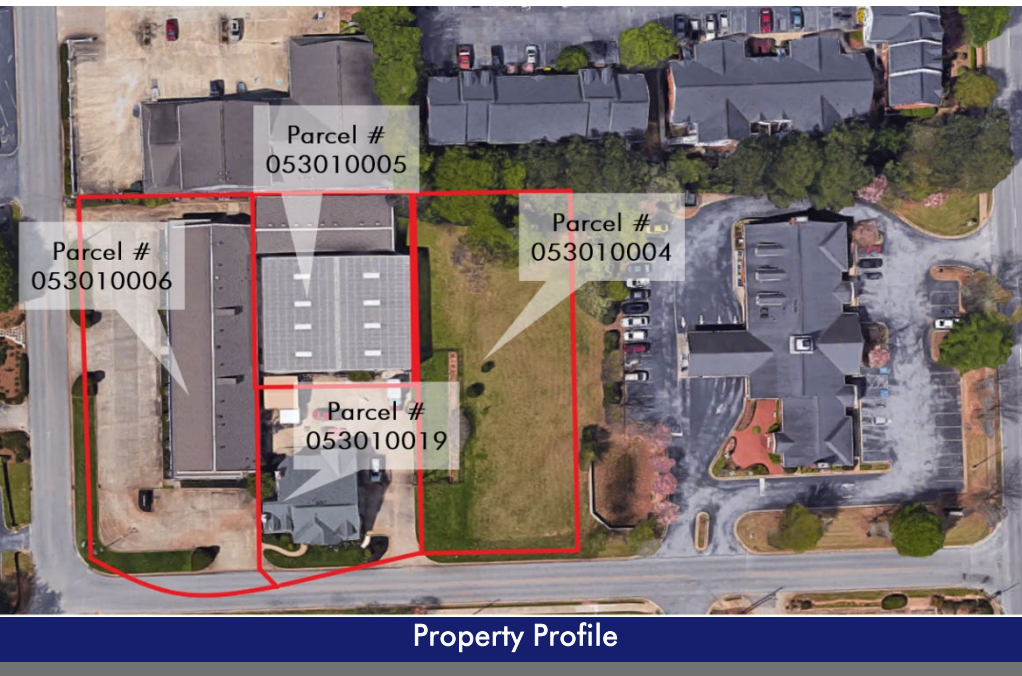


EXCELLENT CORNER SITE FOR SALE

150,160,170 Kathi Ave, Fayetteville, GA



Property Profile

- 1.73 Acres
- Price: \$1,300,000
- 4 Buildings(8,200 SF, 3,096 SF, 6,992 SF, 3,705 SF)
- Zoned: CI
- Great access to Jeff Davis Drive and Highway 85
- City: Fayetteville
- Convenient to Fayette Pavilion
- County: Fayette



For more information please contact:
Brent Randolph Cell: 770.318.6815
James Clark Cell: 770.652.1844
John Dixon Cell: 770.713.1896

770.632.4000 | rwcre.net

900 Westpark Drive, Suite 300 | Peachtree City, GA 30269

EXCELLENT CORNER SITE FOR SALE

150,160,170 Kathi Ave, Fayetteville, GA

Aerial



For more information please contact:
Brent Randolph Cell: 770.318.6815
James Clark Cell: 770.652.1844
John Dixon Cell: 770.713.1896

770.632.4000 | rwcre.net
900 Westpark Drive, Suite 300 | Peachtree City, GA 30269

EXCELLENT CORNER SITE FOR SALE

150,160,170 Kathi Ave, Fayetteville, GA

Plat



For more information please contact:
Brent Randolph Cell: 770.318.6815
James Clark Cell: 770.652.1844
John Dixon Cell: 770.713.1896

770.632.4000 | rwcre.net
900 Westpark Drive, Suite 300 | Peachtree City, GA 30269