

I-5 Olympia Retail/Office Pad

2102 Henderson Lane SE , Olympia, WA



Investment Overview



ADDRESS

2102 Henderson Lane SE, Olympia, WA 98501



SALE PRICE

\$650,000



LOT SIZE

35,003 SF



PRICE PER SF LAND

\$18.56



ZONING

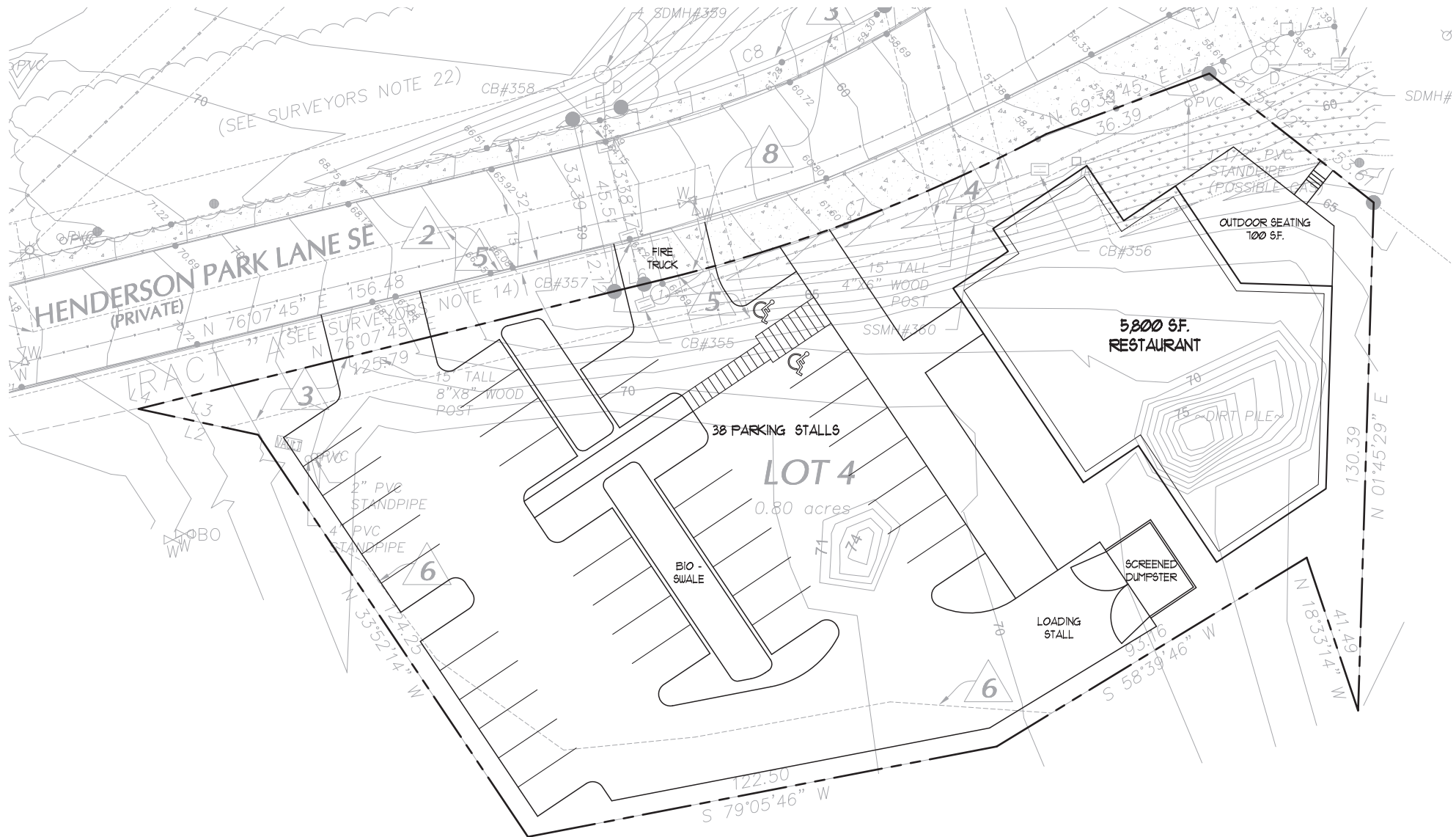
Commercial - High Density

Property Highlights

- Highly visible with easy access to all amenities downtown, state capitol, and I-5 intersection
- Most infrastructure in place, ready for development
- Adjacent to new Hilton Garden Inn on roundabout intersection at the I-5/City of Olympia City Center exit
- New Marriott hotel construction will begin in the fall



Potential Development Plan



Demographics

1 Mile Radius

7,079

Population

40.6

Median Age

89,674

2019 Average Household Income (Esri)



3,269

2019 Total Households (Esri)

3 Mile Radius

73,739

Population

39.8

Median Age

81,432

2019 Average Household Income (Esri)



32,930

2019 Total Households (Esri)

5 Mile Radius

139,411

Population

38.7

Median Age

82,968

2019 Average Household Income (Esri)



58,407

2019 Total Households (Esri)

