

23 Keewaydin Drive

Salem, NH



For Lease
48,684 Sq. Ft.
First Class Office Space

Located in Southern New Hampshire at Exit #2 off Interstate 93. Twenty Three Keewaydin Drive is a proposed, four story, structural steel with EIFS facade building, offering 48,684 sq. ft. of first class office/medical space.

The stucco facade with wrap around glass will have views of the beautiful landscape. The exceptionally maintained building will have great access and visibility to Interstate 93 North and South.

Just 30 minutes to Boston and only 20 minutes to Manchester.

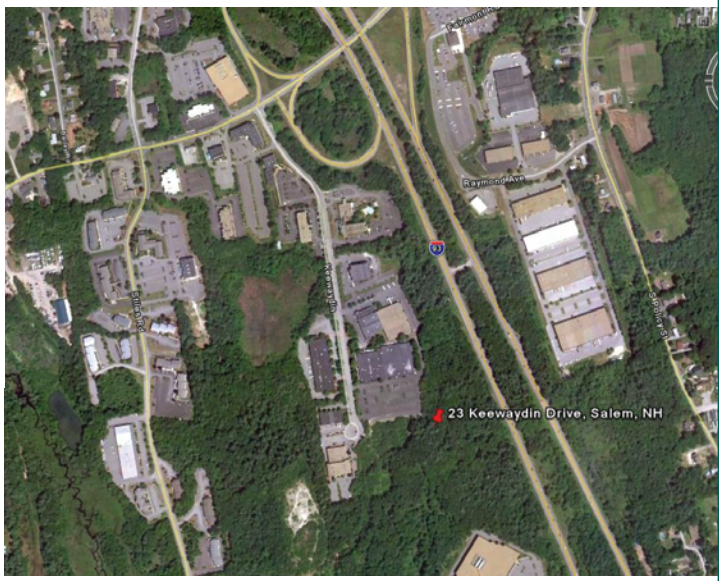
For further information, please call our main office or visit our website:

(603) 894-1104
www.BrooksProperties.com

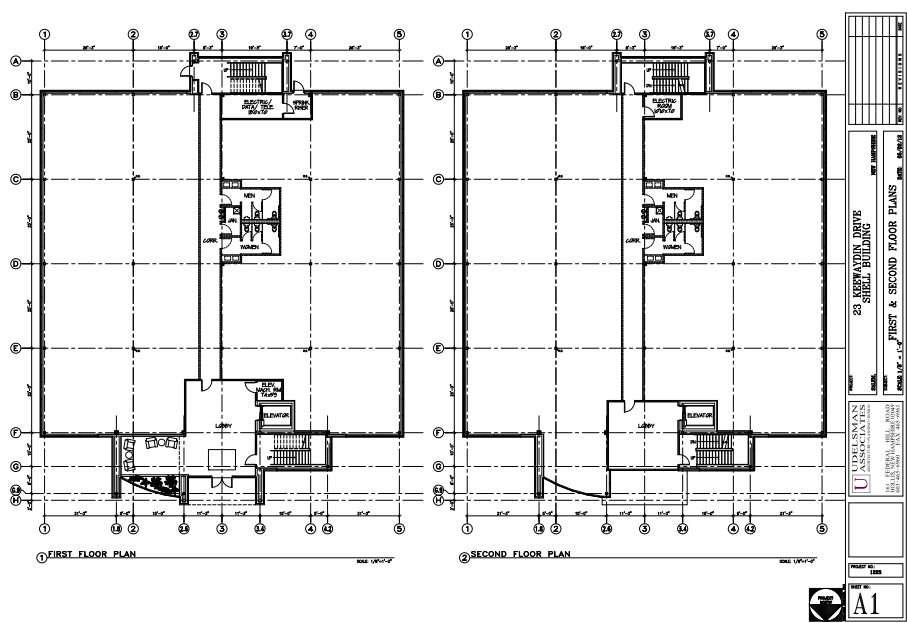


Proposed Building Specifications

- Land: 4.1 acres
- Zoning: Commercial
- Building Size: 48,684 square feet
- Year Built: Proposed
- Type: Four Story, Structural Steel, EIFS
- Parking: 4 per 1,000
- Ceiling Height: 9'2" Finished
- Sprinkled: Yes
- Electrical Service: 1,200 Amp 3 phase 480 volt
- HVAC: Split System
- Type Fuel: Natural Gas
- Sewer Water: Municipal Water/Sewer



Sample Floor Plan



BP BROOKS Properties
FULL SERVICE COMMERCIAL REAL ESTATE DEVELOPMENT

9 Red Roof Lane
Salem, NH 03079
(603) 894-1104
www.BrooksProperties.com