

# PRIME TRACT Covington, LA



**LATTER & BLUM**  
Since 1916 INC/REALTORS®  
RE/MAX

Contact **Jim Lark,**



**CCIM Institute**  
Commercial Real Estate's  
Global Standard for Professional Achievement

Office – 985.626.5695  
Direct - 985.626.9920  
[jlark@airmail.net](mailto:jlark@airmail.net)

Latter Blum Inc  
1151 N Causeway Blvd  
Mandeville, LA 70471

# Location Map



**LATTER & BLUM**  
Since 1916 INC/REALTORS<sup>®</sup>

Contact **Jim Lark,**



**CCIM Institute**  
Commercial Real Estate's  
Global Standard for Professional Achievement

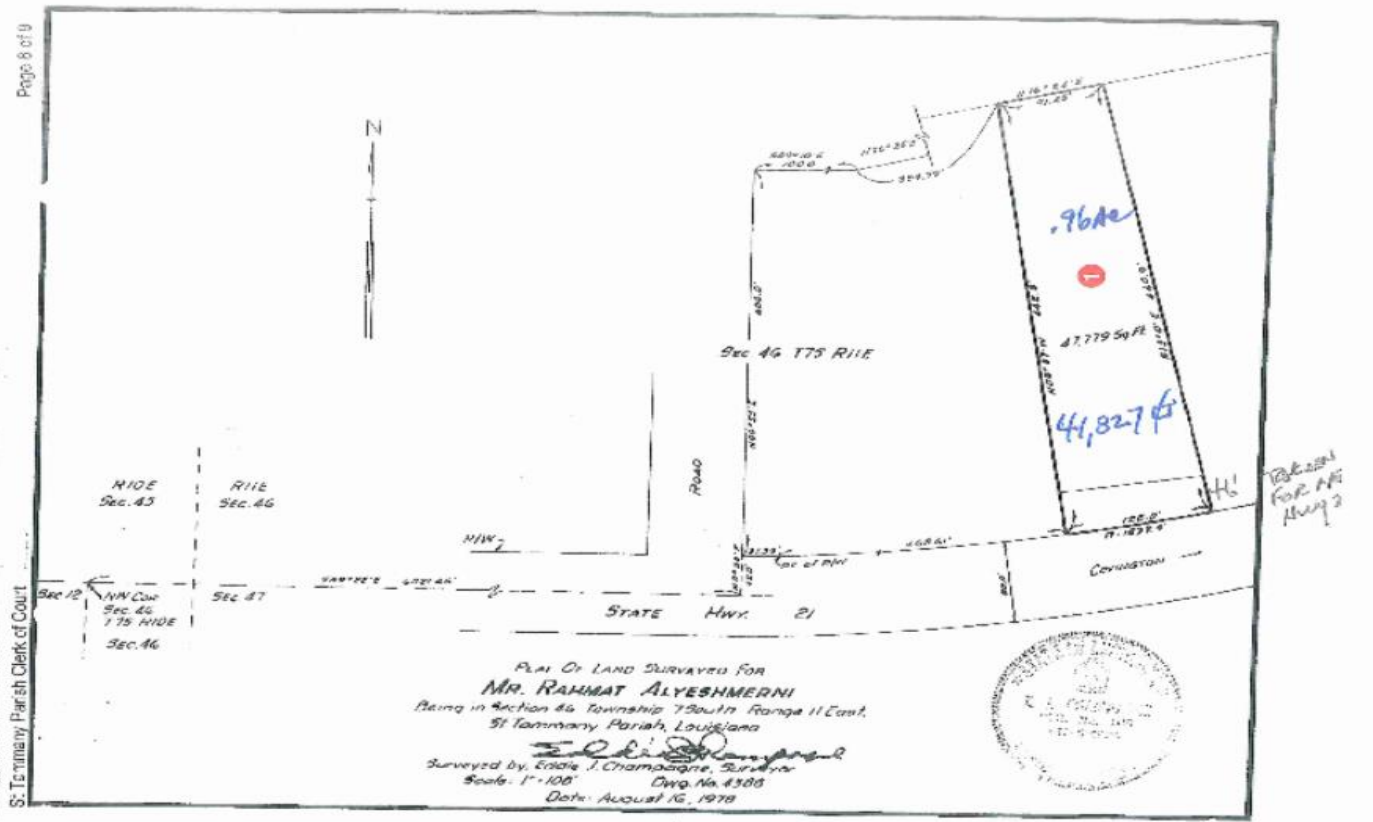
Office – 985.626.5695  
Direct - 985.626.9920  
[jlark@airmail.net](mailto:jlark@airmail.net)

Latter Blum Inc  
1151 N Causeway Blvd  
Mandeville, LA 70471

The information contained herein was obtained from sources deemed reliable, but Latter Blum Inc does not guarantee its accuracy



# Survey & Information



**LATTER & BLUM**  
Since 1916 INC/REALTORS®

Contact **Jim Lark**,



**CCIM Institute**  
Commercial Real Estate's  
Global Standard for Professional Achievement

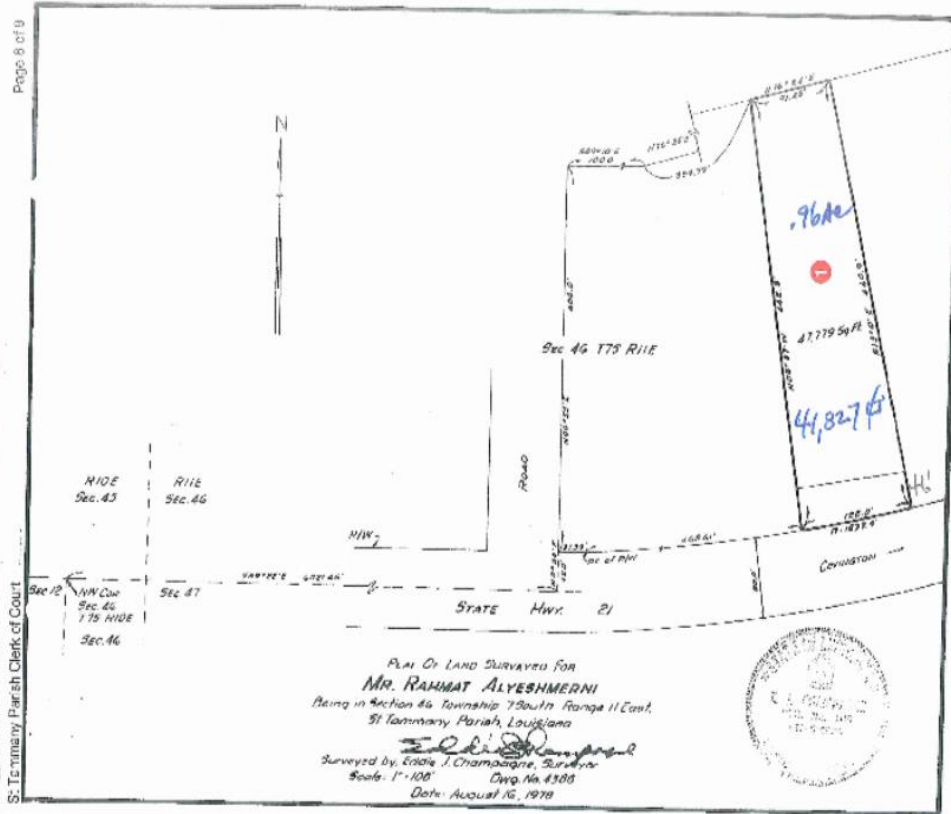
Office – 985.626.5695

Direct - 985.626.9920

[jlark@airmail.net](mailto:jlark@airmail.net)

Latter Blum Inc  
1151 N Causeway Blvd  
Mandeville, LA 70471

# Survey & Information



## .96 Acre Parcel

- .96 Acre of Prime Commercial Property located on Hwy 21, Covington.
- Property Zoned HC2.

Listing Price - **\$489,500**



**LATTER & BLUM**  
Since 1916 INC/REALTORS®

Contact **Jim Lark**,



**CCIM Institute**  
Commercial Real Estate's  
Global Standard for Professional Achievement

Office – 985.626.5695

Direct - 985.626.9920

[jlark@airmail.net](mailto:jlark@airmail.net)

Latter Blum Inc  
1151 N Causeway Blvd  
Mandeville, LA 70471

# Survey & Information

