

Lexington Center

Office Space Available for Lease

19 Muzzey Street Lexington, MA

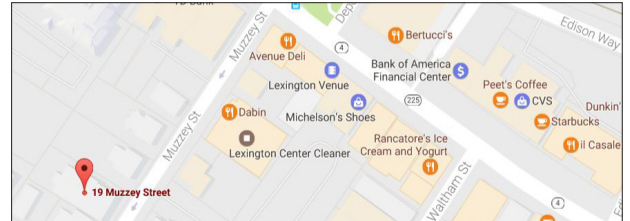


Property Information

Address:	19 Muzzey Street Lexington, MA	Year Built:	1971
Available:	1,560 - 3,863 +/- SF	Utilities:	All leases include water, heat, and A/C. Tenant responsible for electric.
Total SF:	21,968 +/- SF		
Land Area:	.27 Acres		
Parking Spaces:	6 - Reserved		

Trade Area Demographics

	1 Mile	3 Miles	5 Miles
Population:	7,600	60,088	204,302
Households:	2,754	21,318	75,234
Average HH Income:	\$174,474	\$151,847	\$132,033



19 Muzzey Street is a 21,968 +/- square foot multi-tenant office building. This building is conveniently located off Massachusetts Ave, a diverse retail and residential area in Lexington, MA. Attractive medical office space with potential for general office use. Property is under new ownership and currently undergoing common area renovations. Property is in close proximity to ample municipal parking and street parking.

For Leasing Information:

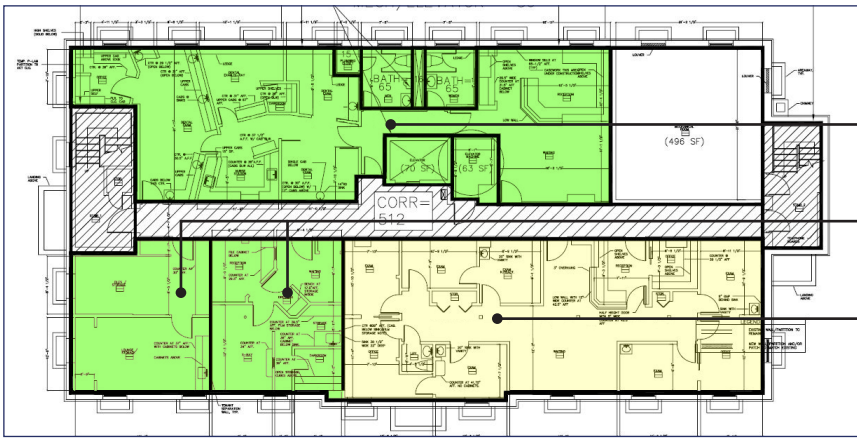
Chris McMahon
781.862.9700 x 225
cjm@sumrp.com

Gabrielle O'Brien
781-862-9700 x 213
go@sumrp.com

Summit Realty Partners

Summit Realty Partners
80 Hayden Ave
Lexington, MA 02421
www.summitrealtypartners.com

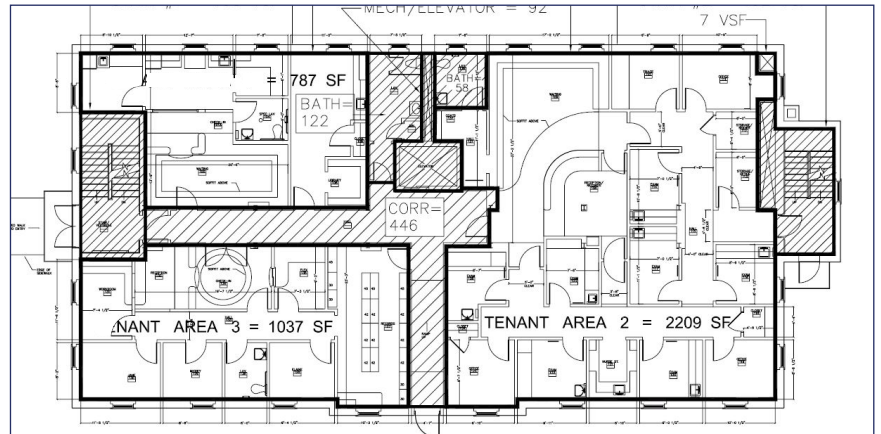
Lower Level



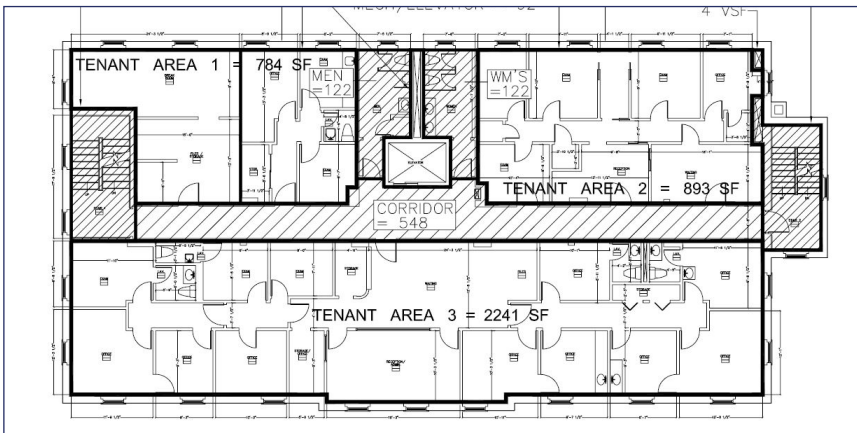
Suite 6
Available
±2,303 SF
(1/1/18)

Suite 5
Available
1,560 SF

First Floor



Second Floor



Third Floor



Summit Realty Partners

Summit Realty Partners
80 Hayden Ave
Lexington, MA 02421
www.summitrealtypartners.com