



CAMPUS 2100

#campus2100

Deutsche
Asset Management



CUSHMAN &
WAKEFIELD

ANEW YOUR CREATIVITY

CAMPUS 2100 IS A UNIQUE 3-BUILDING OFFICE COMPLEX

located in the heart of El Segundo's Superblock. Formerly CSC and Rhythm & Hues Corporate Headquarters, Campus 2100 now offers users the opportunity to take advantage of a unique campus setting. New collaborative open air courtyards accompanied by both creative and traditional office environments provide users with a variety of office space choices and sizes. Located less than 1 mile from the ocean, within a short distance to numerous amenities and freeways, Campus 2100 is the best choice for your company's new home.







A NEW YOUR ENVIRONMENT

A photograph of a modern building courtyard. The scene features a prominent red walkway that curves through the space. In the foreground, a long, curved red bench with a grey concrete base sits on a dark grey paved area. To the right of the bench is a landscaped garden bed with various green plants and small flowers. In the background, a building with a bright red facade and large glass windows is visible. The sky is overcast, and the overall atmosphere is clean and contemporary.

NEW LANDSCAPE AND HARDSCAPE
THROUGH-OUT THE CAMPUS



A NEW YOUR FOCUS



UNIQUE 3-BUILDING
CAMPUS SETTING

NEW LANDSCAPE
& HARDSCAPE

COMPLETELY RENOVATED
& REDEVELOPED

COVERED PARKING
STRUCTURE

RETAIL & FOOD WITHIN
WALKING DISTANCE

BISTRO & MEETING AREA

CAMPUS
2100

HIGHLIGHTS

COLLABORATIVE
EXTERIOR COURTYARDS
& SITTING AREA

THEATRE

SUPERB ACCESS TO
PUBLIC TRANSPORTATION
& FREEWAYS

IMMEDIATELY ADJACENT
TO DOUBLETREE HOTEL

RESPONSIVE OWNERSHIP

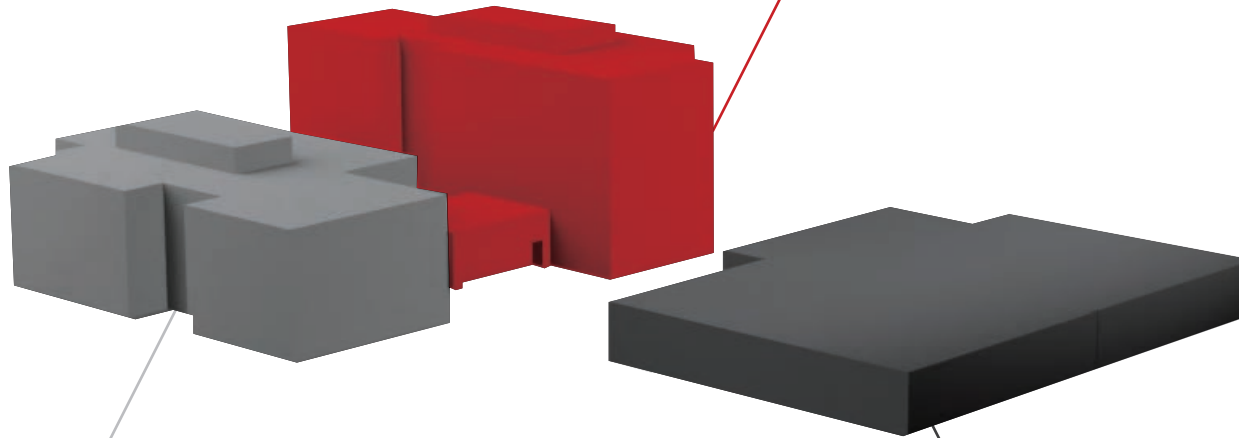
PRO-BUSINESS CITY WITH
LIMITED TAXATION

PROPERTY SPECS & AVAILABILITIES

2100 GRAND

Suite 320: 2,714 RSF

- 6 story office building totaling 103,583 SF
- Spec Suites Available
- Flexible build out available
- Expansive lobby area
- Private landscaped garden area
- Fully fenced and secured area
- Excellent window line
- Conference/Bistro on ground floor for Tenants use



2120 GRAND

Suite 100 - 7,055 RSF

Suite 145 - 6,765 RSF

Suite 300 - 23,683 RSF

- 3 story office building totaling 68,451 SF
- Full floor opportunity
- Opens to central courtyard
- Separate defined lobby area
- Fully secure building

2150 GRAND

FULLY LEASED

LAX



I-105



I-405

CAMPUS
2100

PCH-1







CAMPUS 2100

EXCLUSIVE AGENTS

CHRIS SINFIELD

Vice Chairman
chris.sinfield@cushwake.com
+1 310.525.1922
CA Lic. 01107208

TOM SHEETS

Executive Managing Director
tom.sheets@cushwake.com
+1 310.525.1919
CA Lic. 01252183

QUINT CARROLL

Director
quint.carroll@cushwake.com
+1 310.525.1931
CA Lic. 01914692

 #campus2100

The depiction in the included photograph of any person, entity, sign, logo or property, other than Cushman & Wakefield's (C&W) client and the property offered by C&W, is incidental only and is not intended to connote any affiliation, connection, association, sponsorship or approval by or between that which is incidentally depicted and C&W or its client. This listing shall not be deemed an offer to lease, sublease or sell such property; and, in the event of any transaction for such property, no commission shall be earned by or payable to any cooperating broker except if otherwise provided pursuant to the express terms, rates and conditions of C&W's agreement with its principal, if, as and when such commission (if any) is actually received from such principal. (A copy of the rates and conditions referred to above with respect to this property is available upon request.)

Deutsche
Asset Management



 CUSHMAN &
WAKEFIELD