

FLATIRON
DISTRICT

NEW YORK
NY

14 WEST 17TH STREET



CONCEPTUAL RENDERING

SPACE DETAILS

LOCATION

South block between Fifth and Sixth Avenues

APPROXIMATE SIZE

Ground Floor 3,200 SF

CEILING HEIGHT

Ground Floor 14 FT

FRONTAGE

25 FT on west 17th Street

TERM

Negotiable

POSSESSION

Arranged

SITE STATUS

Currently Kabbalah Centre

NEIGHBORS

Bandier, Lululemon Athletica, Athleta, Gap, Aveda, Potterybarn, Muji, Lou & Grey, Rigby & Peller, Anthropologie, J.Crew, Zara, Aldo, Untukit, H&M, Shephora, Coach, Kate Spade, Michael Kors, Nike and Bonobos

COMMENTS

Pristine retail/showroom/medical space with soaring ceiling heights in absolute white-box, turn-key condition

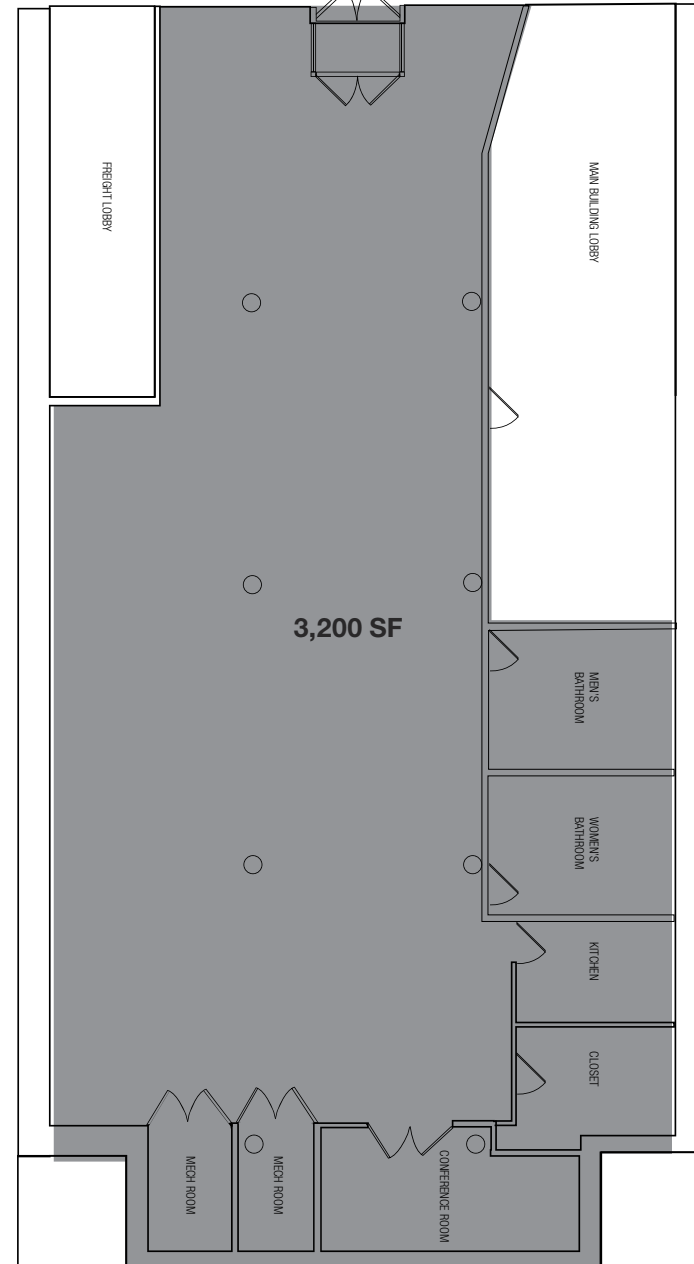
In close proximity to Union Square and Madison Square Park

Steps from mass transportation including the **4 5 6 F M L N Q R W** subway lines

Surrounded by major international retail brands, popular area restaurants and bars, and upscale furniture and home goods/decor showrooms

GROUND FLOOR

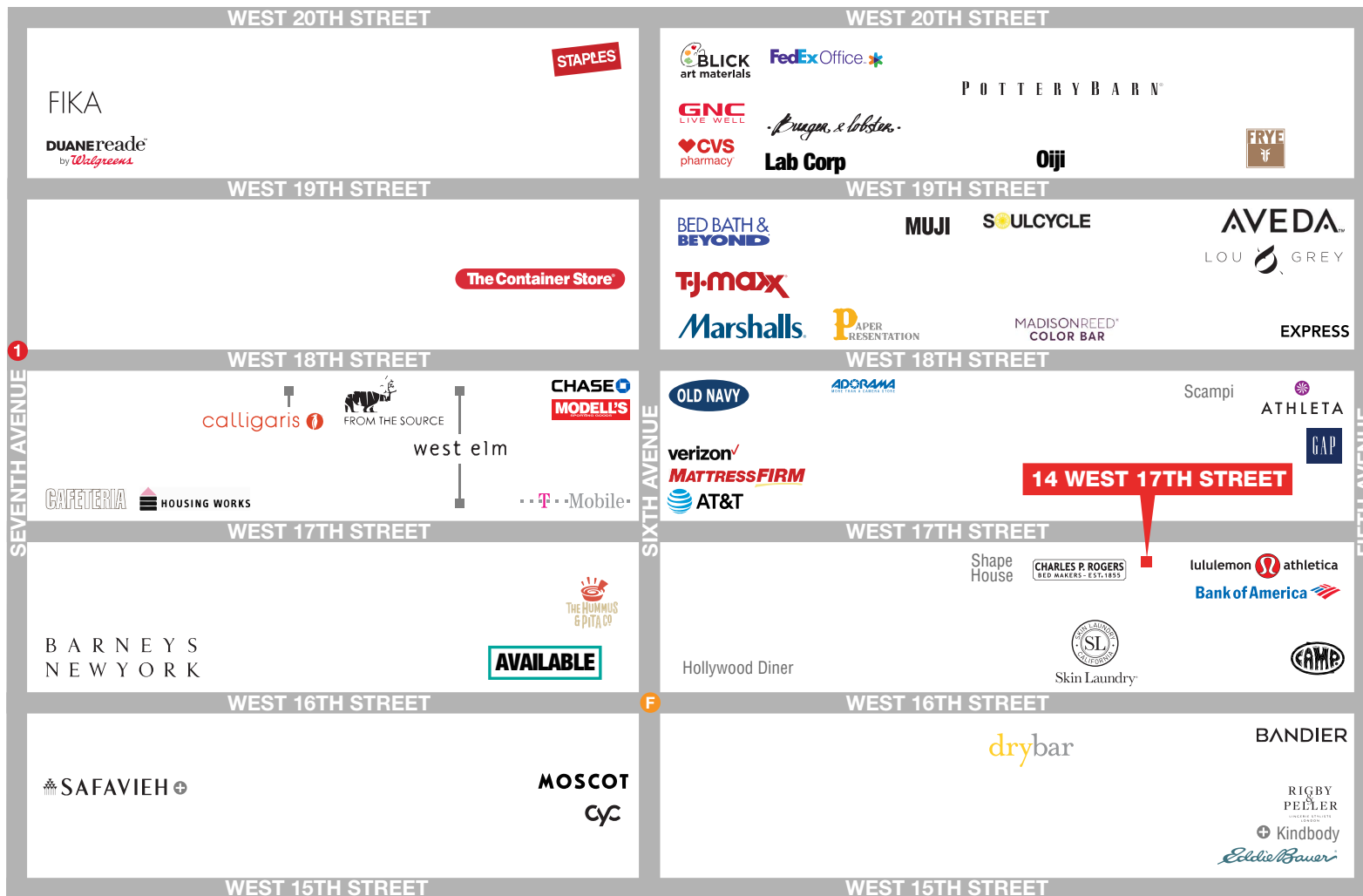
25 FT
WEST 17TH STREET



SPACE PHOTOS



AREA RETAIL



CONTACT EXCLUSIVE AGENTS

LUCAS KOOYMAN
212.372.2384
lkooyman@ngkf.com

JASON PRUGER
212.372.2092
jpruger@ngkf.com



NGKF.COM

© 2019 NEWMARK KNIGHT FRANK RETAIL. The information contained herein has been obtained from sources deemed reliable but has not been verified and no guarantee, warranty or representation, either express or implied, is made with respect to such information. Terms of sale or lease and availability are subject to change or withdrawal without notice.