

CUBEWORK®



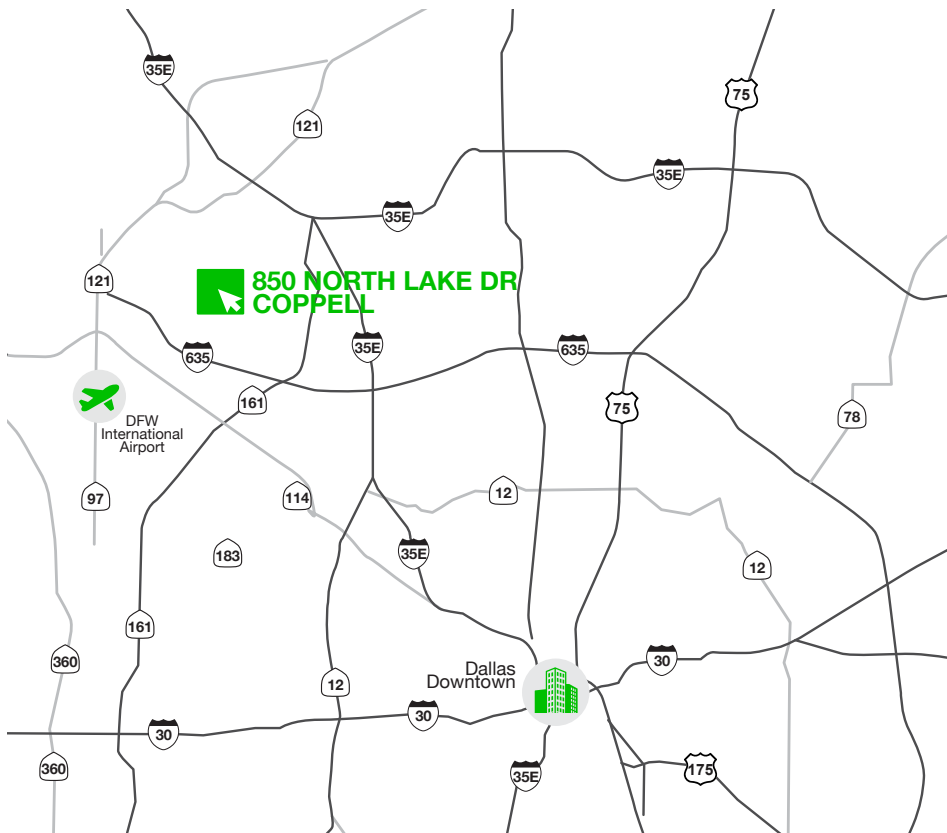
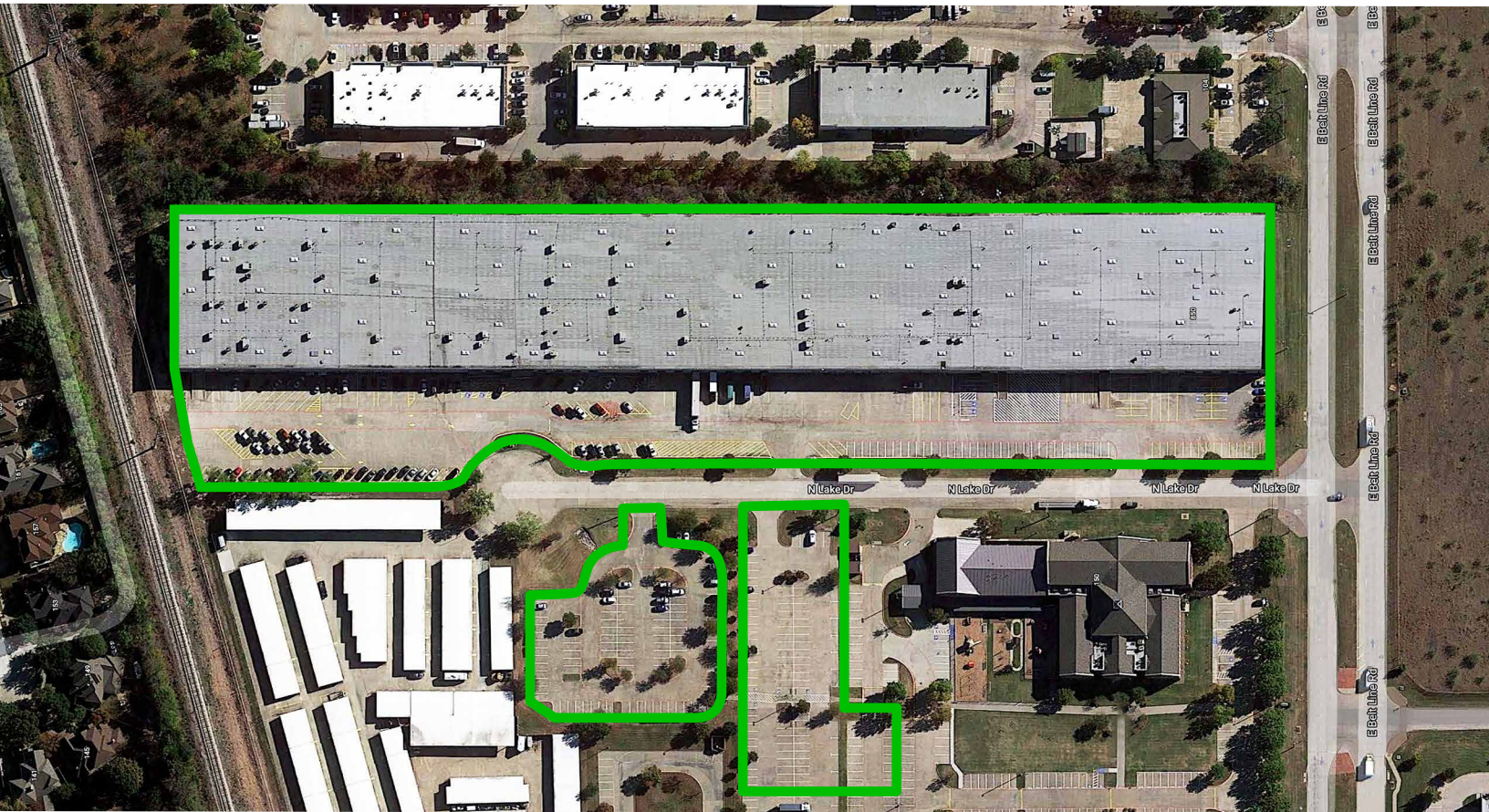
850 NORTHLAKE DRIVE, COPPELL, TX 75019

 **(909) 991 • 6669**

 **info@cubework.com**

 **www.cubework.com**

KEY DISTANCE



2.2 mi
635 Interstate



19 mi
Downtown
Dallas

3.9 mi
121 Interstate



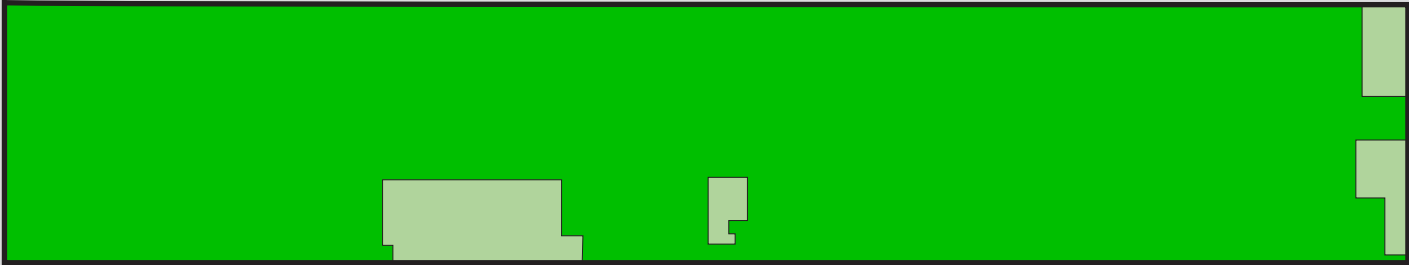
5.5 mi
Dallas/Fort Worth
International
Airport



214.6 mi
Port of
Shreveport

16.3 mi
Dallas
Love Field
Airport

BUILDING FEATURES



■ WAREHOUSE ■ OFFICE

PROPERTY DETAILS

- Property Sub- type: Warehouse
- Self-Storage: 100 SF - 100,000 SF
- On-Site Office with Warehouse
- Full Service Gross

Building size: 230,400 SF

Office: 13,754 SF

Warehouse: 202,870 SF

Clear Height: 24'

Dock High Doors: 26

Standard Parking Spaces: 290



AMENITIES

- 24/7 Availability & Building Access
- High-speed WiFi
- Conference Rooms / Event Rooms
- Furnished workspaces
- Kitchen Amenities / Refrigerator
- Business Suites / Corporate Suites available
- Security Gate

SERVICES

- Front Desk Service
- Mail and packaging handling
- Daily Cleaning
- Office Supplies
- Business class printers
- Fresh coffee & tea
- Air Conditioning
- Surveillance and night security guards
- Flexible on- demand warehouse terms
- Option to Merge Offices

FACILITY PHOTOS



FOR MORE INFORMATION CONTACT

 (909) 991 • 6669

 info@cubework.com

 www.cubework.com