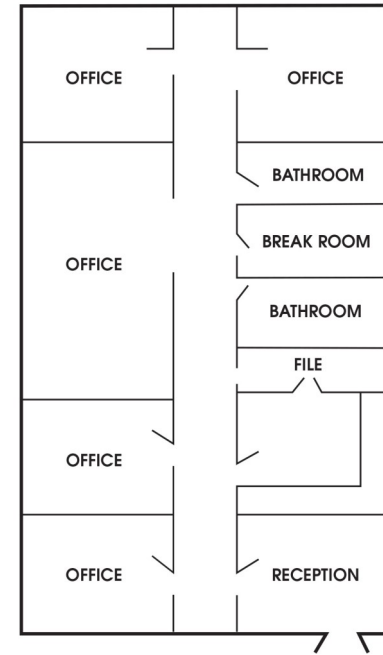


FOR LEASE

THE BOARDWALK COMPANY



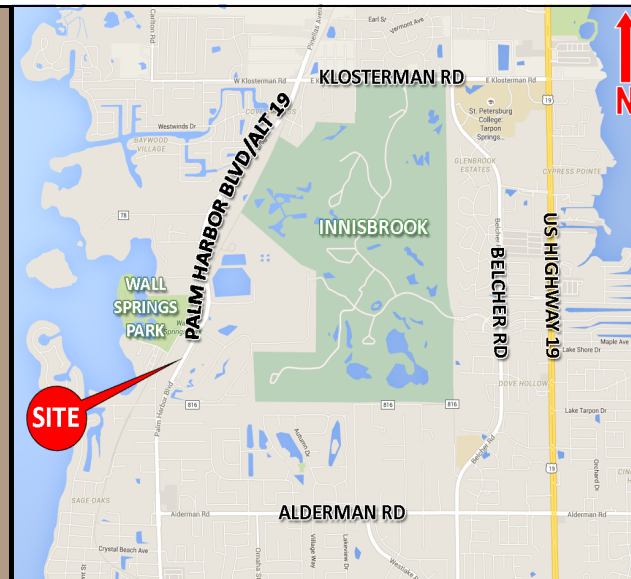
(Drawing not to scale. For informational purposes only.)

Lease Rate: \$15.00 PSF
Modified Gross

BROOK EXECUTIVE PARK • PALM HARBOR, FL

Property #6194

- 3607Alternate 19, Palm Harbor, FL 34683
- Unit B has 1,787 SF (mol) with 5 offices, reception area, and a kitchen
- Medical or general office use
- Close to area parks



For more information, contact:

Judy Haner

Office: 727.784.1007

Fax: 727.784.1008

Cell: 727.460.3032

realtygal@boardwalkcompany.com

31640 US Hwy 19 N, Suite 1
Palm Harbor, FL 34684

www.BoardwalkCompany.com
LICENSED REAL ESTATE BROKER

The information contained herein was collected from sources deemed to be reliable. The Boardwalk Company, its Agents and Sellers make no warranties or representation of any manner as to the accuracy, and the same is subject to misstatements of fact, errors or omissions, prior sale, change of price, terms, withdrawal from market without notice or other modifications. Buyer, tenants and/or all other parties shall verify all information independently.