

AVAILABLE FOR SALE

Free Standing Medical/Office Building

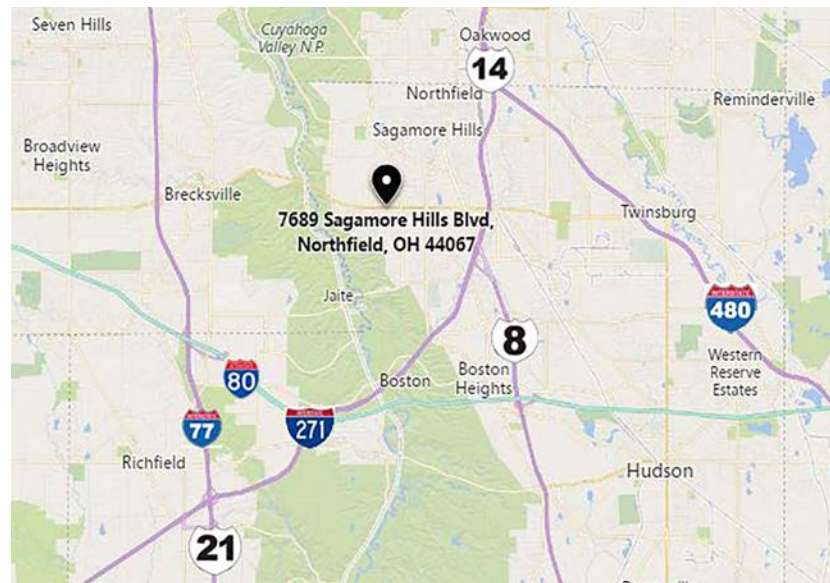
7689 Sagamore Hills Blvd.

Sagamore Hills, Ohio 44067



Property Highlights

- 5,826 SF medical office building
- Land Size: 0.785 acres
- Year Built/Renovated: 1969/1997
- Forced Air heat, 100% AC
- 36 parking spaces available
- Property is adjacent to Highpoint Plaza
- Excellent opportunity at \$325,000



CONTACT INFORMATION:

ROBERT WETZEL

Vice President

216.525.1486

rwetzel@crescorealestate.com

MATTHEW BEESLEY

Principal

216.525.1466

mbeesley@crescorealestate.com

3 SUMMIT PARK DRIVE, SUITE 200, CLEVELAND, OHIO 44131 - CRESCOREALESTATE.COM

Independently Owned and Operated / A Member of the Cushman & Wakefield Alliance

Cushman & Wakefield Copyright 2015. No warranty or representation, express or implied, is made to the accuracy or completeness of the information contained herein, and same is submitted subject to errors, omissions, change of price, rental or other conditions, withdrawal without notice, and to any special listing conditions imposed by the property owner(s). As applicable, we make no representation as to the condition of the property (or properties) in question.

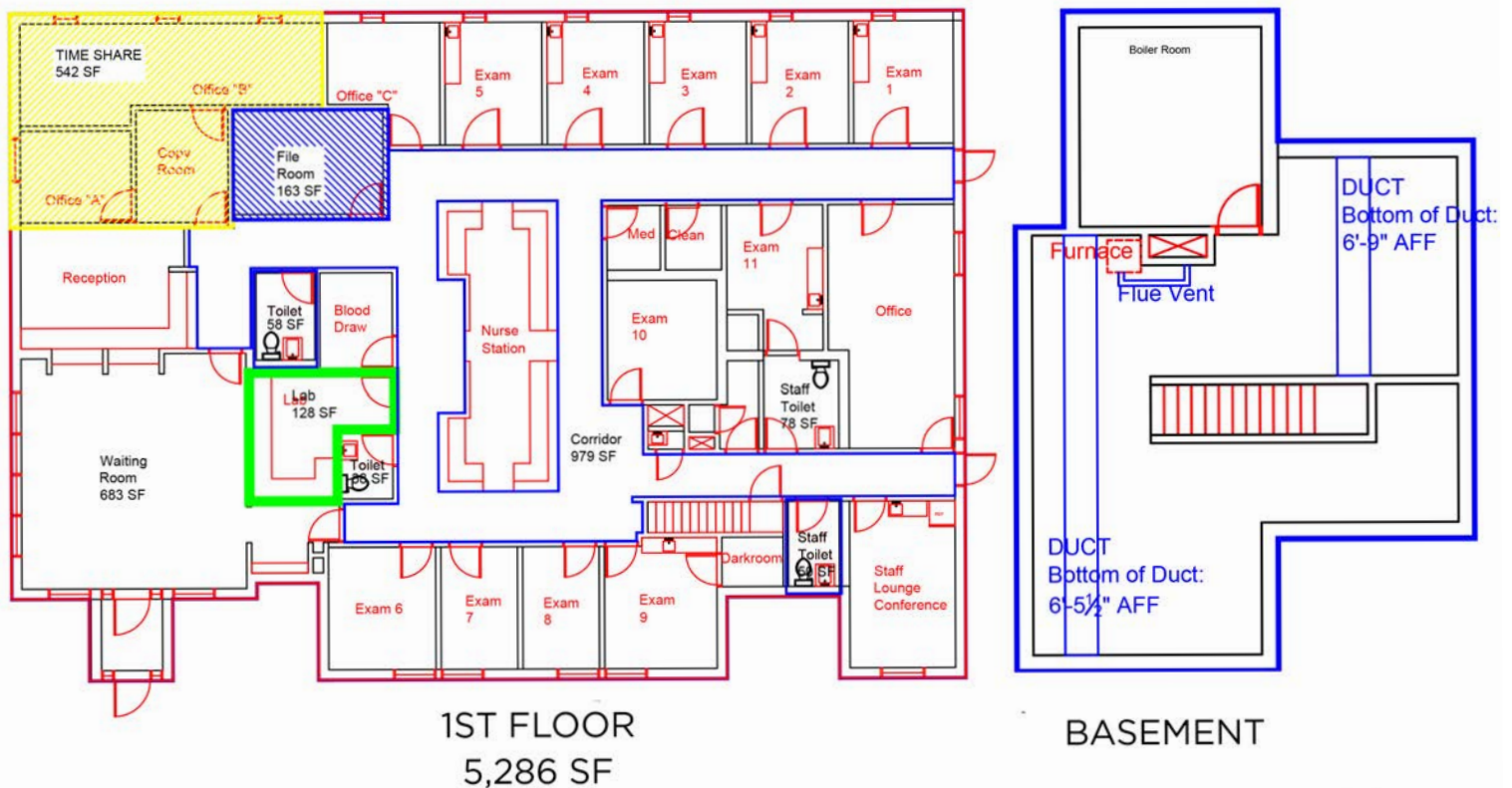


AVAILABLE FOR SALE

Free-Standing Medical/Office Building

7689 Sagamore Hills Blvd.
Sagamore Hills, Ohio 44067

FLOORPLAN



CONTACT INFORMATION:

ROBERT WETZEL

Vice President
216.525.1486
rwetzel@crescorealestate.com

MATTHEW BEESLEY

Principal
216.525.1466
mbeesley@crescorealestate.com

3 SUMMIT PARK DRIVE, SUITE 200, CLEVELAND, OHIO 44131 - CRESCOREALESTATE.COM

Independently Owned and Operated / A Member of the Cushman & Wakefield Alliance

Cushman & Wakefield Copyright 2015. No warranty or representation, express or implied, is made to the accuracy or completeness of the information contained herein, and same is submitted subject to errors, omissions, change of price, rental or other conditions, withdrawal without notice, and to any special listing conditions imposed by the property owner(s). As applicable, we make no representation as to the condition of the property (or properties) in question.

