

FOR LEASE: EXECUTIVE OFFICE SUITE REMINGTON OFFICE PARK



5709 S Remington Pl #103-104
Sioux Falls SD 57108

AVAILABLE:

SUITE 103-104: 260 SF
PRICE: \$720 per month
ZONING: C-2/RE-3
TERMS: Gross
YEAR Built: 2009
AVAILABLE: January 2019



**For more information,
please contact:**

Mike Van Buskirk

p: 605.361.8211
c: 605.366.0936
e: Mike@VBCLink.com

PROPERTY INFORMATION

- Beautiful upscale building with high-end finishes and tasteful landscape, designed to enhance your business.
- Excellent location, just west of the signalized 69th Street and Western Avenue intersection.
- Perfect setting for your office, personal service and many other business types.
- Thriving, high-income demographic.
- Built-in customer base from area businesses.
- Other tenants include Azzarra Tax Service, Epic Massage, Gabe Nelson Financial, among others.

REAL ESTATE DEVELOPMENT | BROKERAGE | INVESTMENT
MANAGEMENT | COMMERCIAL CONSTRUCTION | ENGINEERING | ARCHITECTURE

2571 S Westlake Dr, Ste 100, Sioux Falls, SD 57106 | **o:** 605.361.8211 | **f:** 605.361.8052 | **w:** VBCLink.com

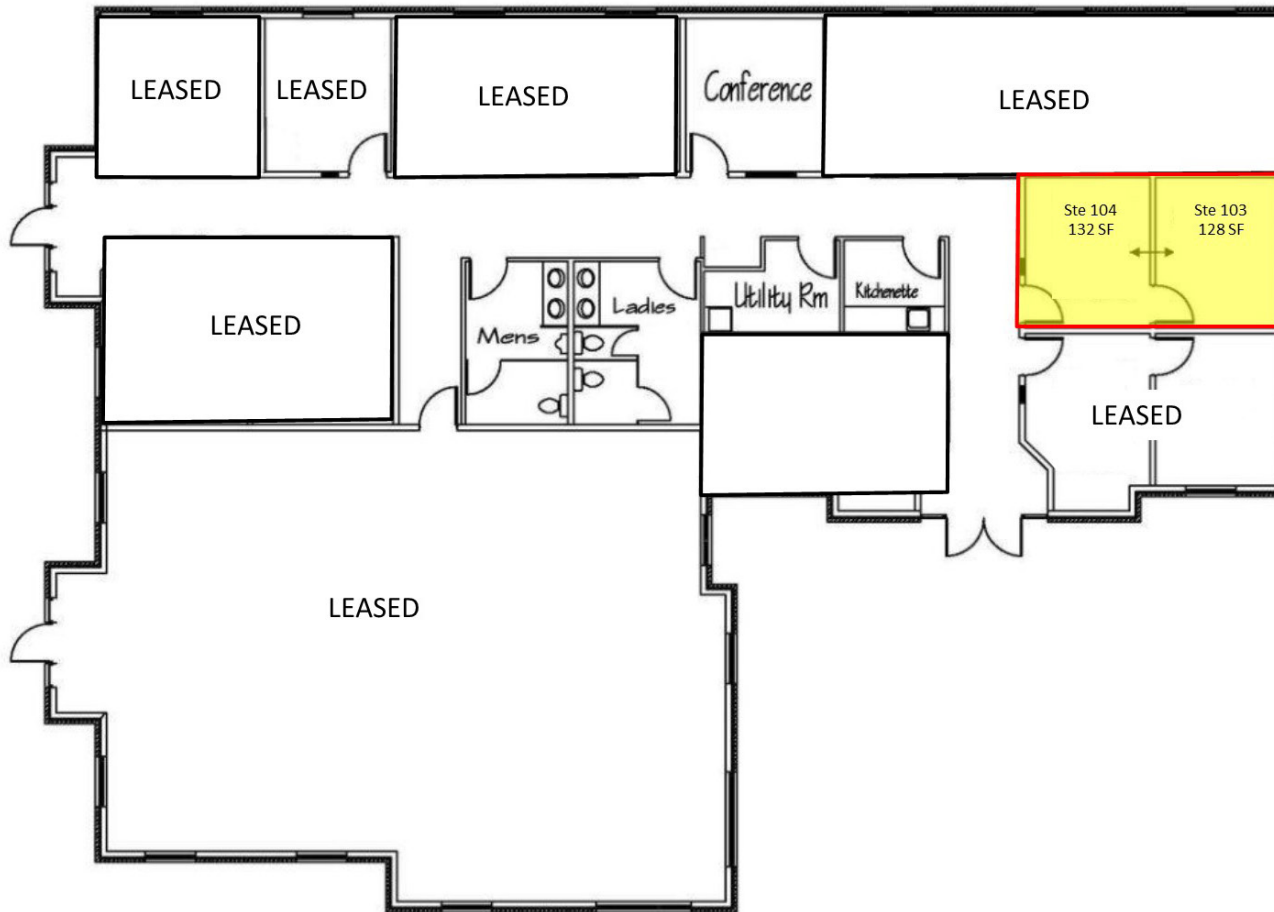


This information has been secured from sources we believe to be reliable, but we make no representation or warranties, expressed or implied, as to the accuracy of the information. All references to age, square footage, income, and expenses are approximate. Buyers or Lessors should conduct their own independent investigations and rely only on those results.

FOR LEASE: EXECUTIVE OFFICE SUITE REMINGTON OFFICE PARK

5709 S Remington Pl #103-104
Sioux Falls SD 57108

BUILDING FLOOR PLAN



Information deemed reliable but not guaranteed.



For more information,
please contact:

Mike Van Buskirk

p: 605.361.8211

c: 605.366.0936

e: Mike@VBCLink.com

VanBuskirk
COMPANIES

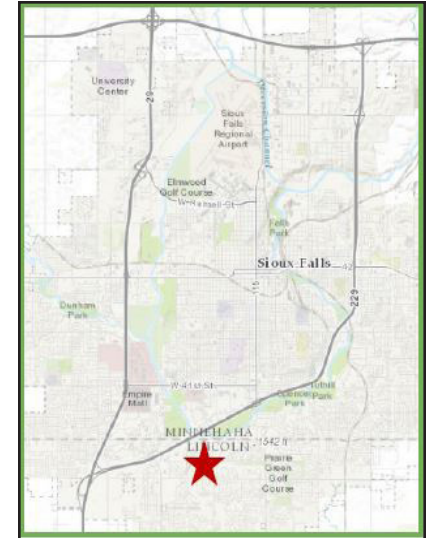
This information has been secured from sources we believe to be reliable, but we make no representation or warranties, expressed or implied, as to the accuracy of the information. All references to age, square footage, income, and expenses are approximate. Buyers or Lessors should conduct their own independent investigations and rely only on those results.

REAL ESTATE DEVELOPMENT | BROKERAGE | INVESTMENT
MANAGEMENT | COMMERCIAL CONSTRUCTION | ENGINEERING | ARCHITECTURE

2571 S Westlake Dr, Ste 100, Sioux Falls, SD 57106 | o: 605.361.8211 | f: 605.361.8052 | w: VBCLink.com

FOR LEASE: EXECUTIVE OFFICE SUITE REMINGTON OFFICE PARK

5709 S Remington Pl #103-104
Sioux Falls SD 57108



For more information,
please contact:

Mike Van Buskirk

p: 605.361.8211

c: 605.366.0936

e: Mike@VBCLink.com

VanBuskirk
COMPANIES

This information has been secured from sources we believe to be reliable, but we make no representation or warranties, expressed or implied, as to the accuracy of the information. All references to age, square footage, income, and expenses are approximate. Buyers or Lessors should conduct their own independent investigations and rely only on those results.

REAL ESTATE DEVELOPMENT | BROKERAGE | INVESTMENT
MANAGEMENT | COMMERCIAL CONSTRUCTION | ENGINEERING | ARCHITECTURE

2571 S Westlake Dr, Ste 100, Sioux Falls, SD 57106 | o: 605.361.8211 | f: 605.361.8052 | w: VBCLink.com