

PRIME RETAIL SPACE ADJACENT TO KOHL'S

Paducah, KY 42001 | 5191 Hinkleville Road | Hinkleville Road and Olivet Church | # 153



- 24,800 +/- SF space available adjacent to Kohl's
- Located on Hinkleville Road the main retail corridor in Paducah
- Great visibility

DEMOGRAPHICS	1 MILE	3 MILES	5 MILES	TRAFFIC COUNTS	
2018 POPULATION	15,436	40,546	59,954	I-24	43,462 VPD
2018 DAYTIME POPULATION	22,667	49,572	73,395	US-60	20,333 VPD
2018 AVERAGE HH INCOME	\$77,661	\$66,968	\$61,736	New Holt Rd	11,390 VPD
2018 MEDIAN HH INCOME	\$53,948	\$45,565	\$41,922		

AVAILABLE SF:
24,800 SF

FRONTAGE:
APPROXIMATELY 97'10"

ZONING:
COMMERCIAL

RATES:
CALL FOR DETAILS

AREA ANCHORS



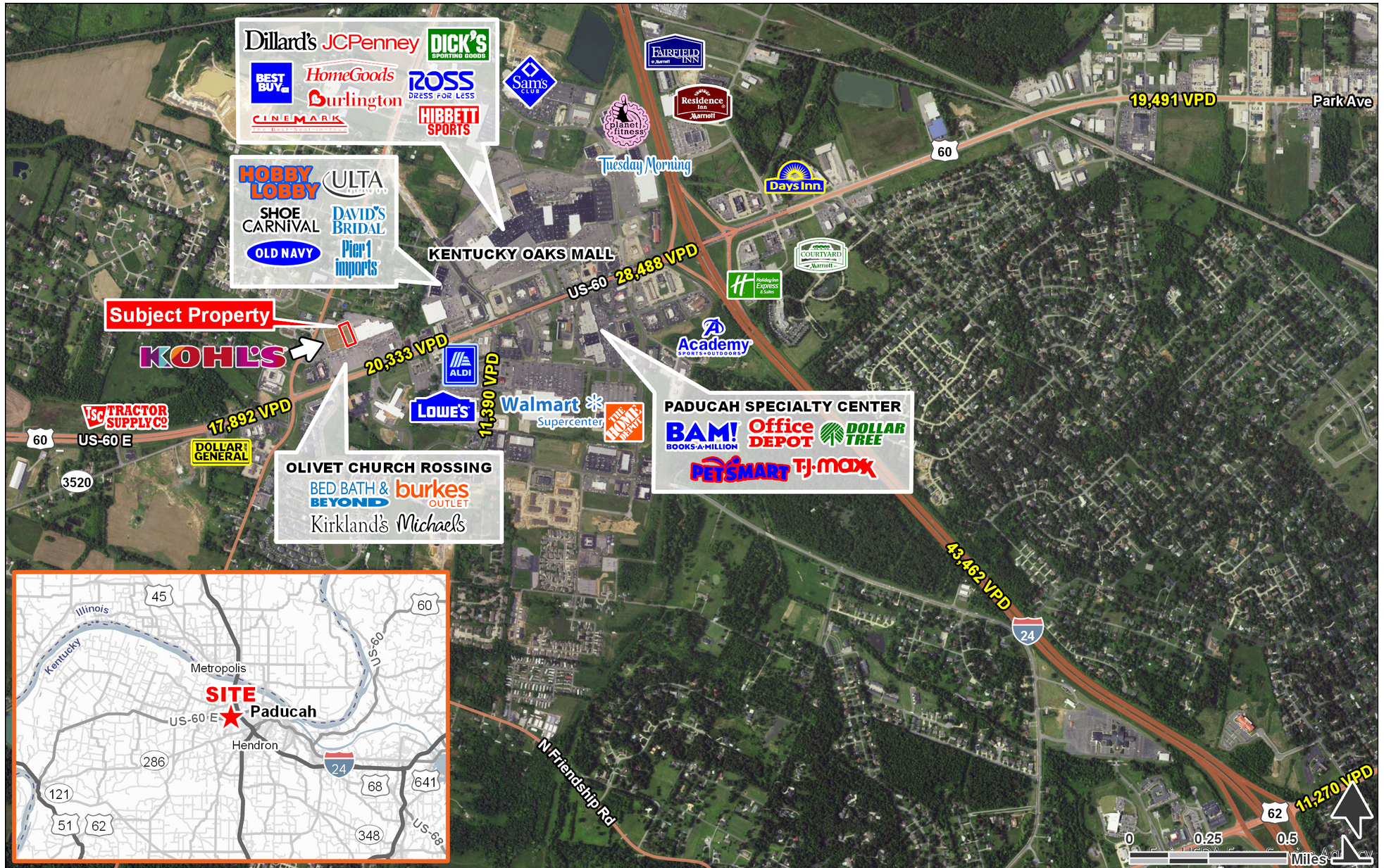
FOR MORE INFORMATION, CONTACT EXCLUSIVE AGENT(S):
 KEVIN SCHREIBER • kevin.schreiber@tscg.com • 502.874.5934
 KEVIN MAYHUGH • kevin.mayhugh@tscg.com • 502.874.5933
 RONDA HOGAN, CCIM • ronda.hogan@tscg.com • 502.874.5936

Demographics: Esri 2018 No warranty expressed or implied has been made as to the accuracy of the information provided herein, no liability assumed for error or omissions.



PRIME RETAIL SPACE ADJACENT TO KOHL'S

Paducah, KY 42001 | 5191 Hinkleville Road | Hinkleville Road and Olivet Church | # 153



FOR MORE INFORMATION, CONTACT EXCLUSIVE AGENT(S):
 KEVIN SCHREIBER • kevin.schreiber@tscg.com • 502.874.5934
 KEVIN MAYHUGH • kevin.mayhugh@tscg.com • 502.874.5933
 RONDA HOGAN, CCIM • ronda.hogan@tscg.com • 502.874.5936

Demographics: Esri 2018 No warranty expressed or implied has been made as to the accuracy of the information provided herein, no liability assumed for error or omissions.



PRIME RETAIL SPACE ADJACENT TO KOHL'S

Paducah, KY 42001 | 5191 Hinkleville Road | Hinkleville Road and Olivet Church | # 153



FOR MORE INFORMATION, CONTACT EXCLUSIVE AGENT(S):
 KEVIN SCHREIBER • kevin.schreiber@tscg.com • 502.874.5934
 KEVIN MAYHUGH • kevin.mayhugh@tscg.com • 502.874.5933
 RONDA HOGAN, CCIM • ronda.hogan@tscg.com • 502.874.5936

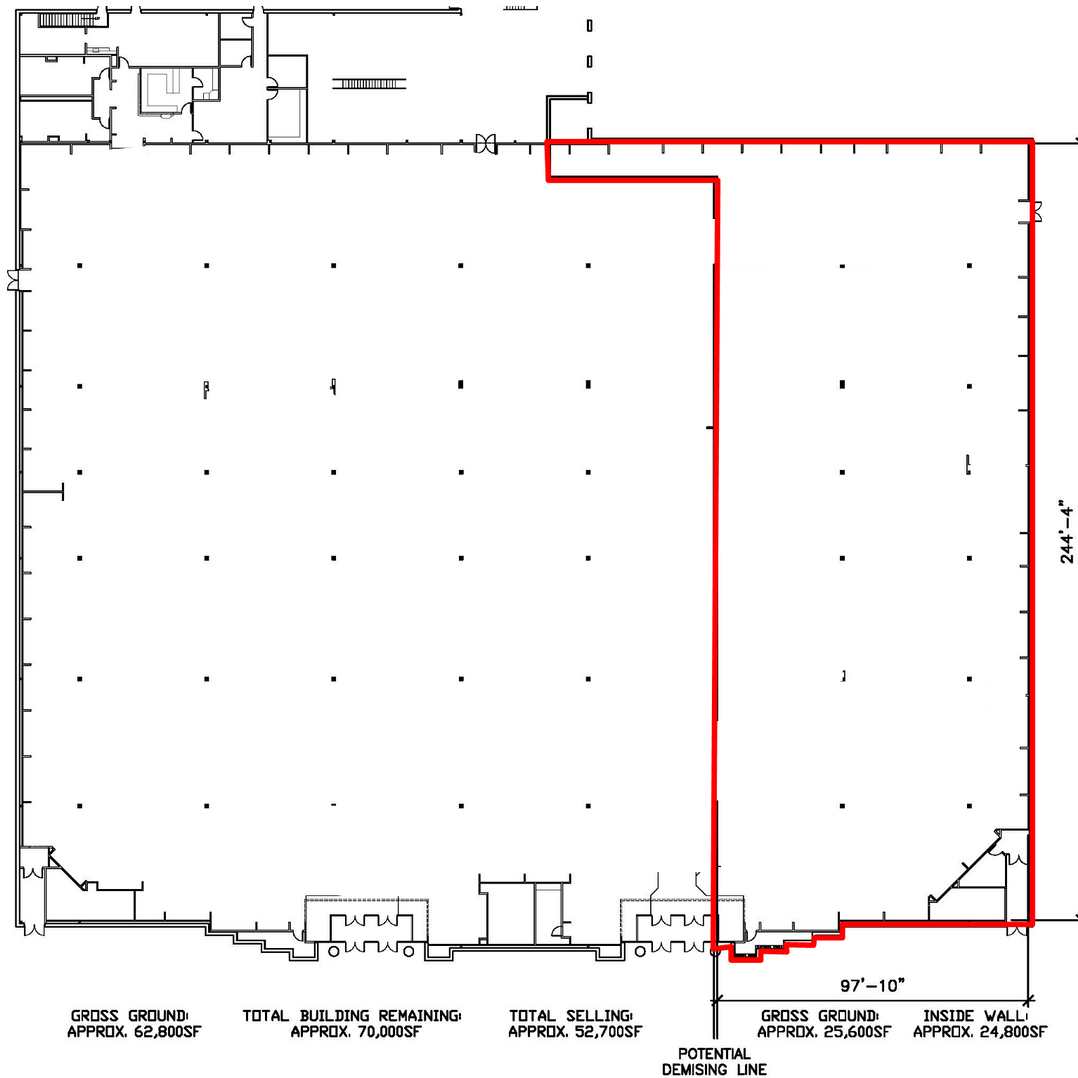
Demographics: Esri 2018 No warranty expressed or implied has been made as to the accuracy of the information provided herein, no liability assumed for error or omissions.

Stan Johnson Co.
 THE NET LEASE AUTHORITY™

CHAINLINKS
 RETAIL ADVISORS

PRIME RETAIL SPACE ADJACENT TO KOHL'S

Paducah, KY 42001 | 5191 Hinkleville Road | Hinkleville Road and Olivet Church | # 153



#10153 Paducah, KY
Updated: 10/18/17



FOR MORE INFORMATION, CONTACT EXCLUSIVE AGENT(S):
KEVIN SCHREIBER • kevin.schreiber@tscg.com • 502.874.5934
KEVIN MAYHUGH • kevin.mayhugh@tscg.com • 502.874.5933
RONDA HOGAN, CCIM • ronda.hogan@tscg.com • 502.874.5936

Demographics: Esri 2018 No warranty expressed or implied has been made as to the accuracy of the information provided herein, no liability assumed for error or omissions.

