

FOR SALE



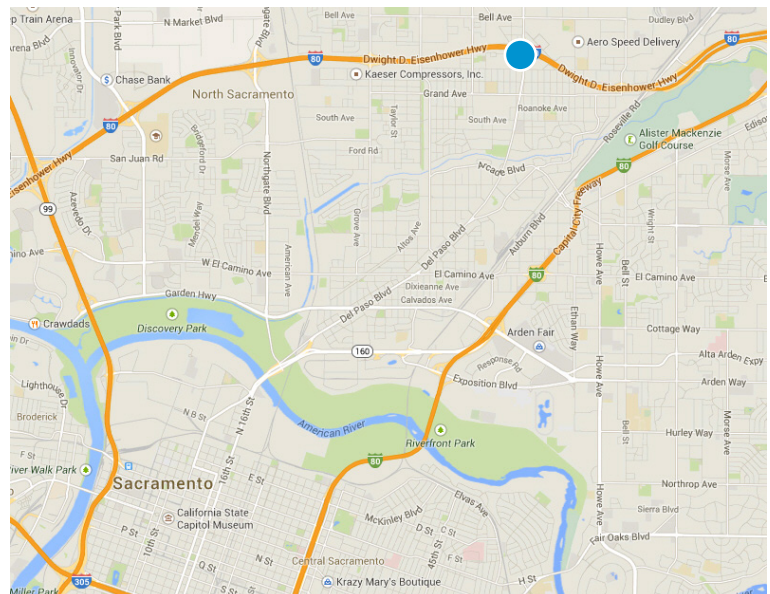
1.67 Acres Freeway Visible Commercial

MARYSVILLE BLVD. & DOOLITTLE STREET, SACRAMENTO, CA



Property Highlights

- › Excellent freeway visibility
- › Located at the Marysville Blvd I-80 on-ramp
- › Two adjacent commercial parcels
- › APNs:
 - 238-0101-017-0000 (.40 Acres)
 - 238-0101-020-0000 (1.27 Acres)
 - (City of Sacramento)
- › Price: \$365,000
- › Zoning: C2-SP
- › C2 Zoning allows many commercial uses



STEVE CHAMBERLAIN
916 563 3037
DRE# 00813856
steve.chamberlain@colliers.com

COLLIERS INTERNATIONAL
301 University Avenue, Suite 100
Sacramento, CA 95825
www.colliers.com

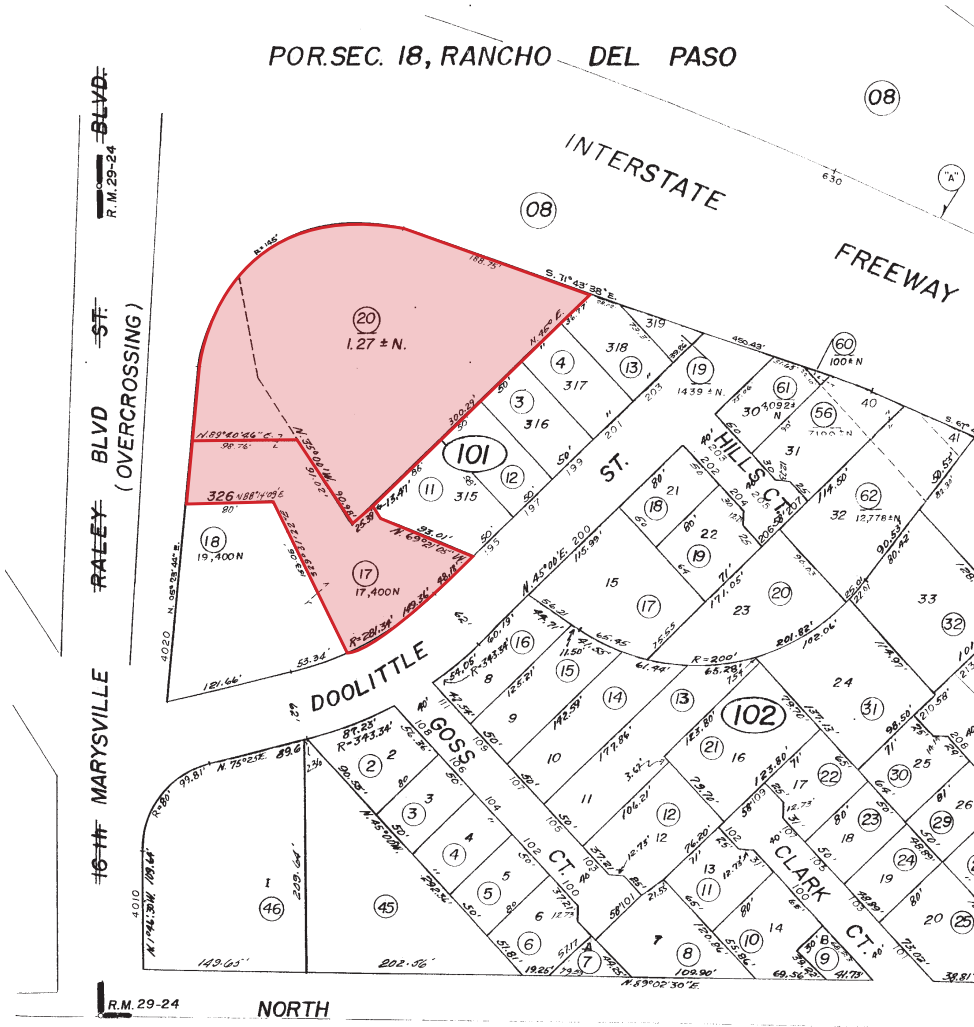
FOR SALE



1.67 Acres Freeway Visible Commercial

MARYSVILLE BLVD. & DOOLITTLE STREET, SACRAMENTO, CA

Parcel Map



Parker Homes Terrace, R.M. Bk. 29, Pg. 24

Bk. 252

NOTE - Assessor's Block Numbers Shown in Fill
Assessor's Parcel Numbers Shown in Circle

This document/email has been prepared by Colliers International for advertising and general information only. Colliers International does not guarantee, warrant or represent that the information contained in this document is correct. Any interested party should undertake their own inquiries as to the accuracy of the information. Colliers International excludes unequivocally all inferred or implied terms, conditions and warranties arising out of this document and excludes all liability for loss or damages arising therefrom.

STEVE CHAMBERLAIN
916 563 3037
DRE# 00813856
steve.chamberlain@colliers.com

COLLIERS INTERNATIONAL
301 University Avenue, Suite 100
Sacramento, CA 95825
www.colliers.com