

±140,272 SF

Build to Suit Office

32' Clear Height

Delivery Q4 2019

FOR LEASE
PORT 146
La Porte, TX

NOW UNDER CONSTRUCTION

ANDREW JEWETT
713 345 1433
andrew.jewett@cushwake.com

JASON DILLEE
713 345 1432
jason.dillee@cushwake.com

1330 Post Oak Blvd, Suite 2700
Houston, TX 77056
Main +1 713 877 1700
cushmanwakefield.com



KEY FEATURES

- ± 140,272 sf available
- Build to suit office
- Estimated delivery Q4 2019
- 32' clear height
- ESFR sprinkler system
- 35 trailer parks
- 50' x 52' column spacing with 60' speed bay
- Additional ± 3.4 Acres Available
- Strategically located east of Highway 146 minutes from Barbour's Cut and Bayport Terminals
- Drive times: 1.5 miles to Barbour's Cut Terminal and ±6 miles to Bayport Terminal

ANDREW JEWETT
713 345 1433
andrew.jewett@cushwake.com

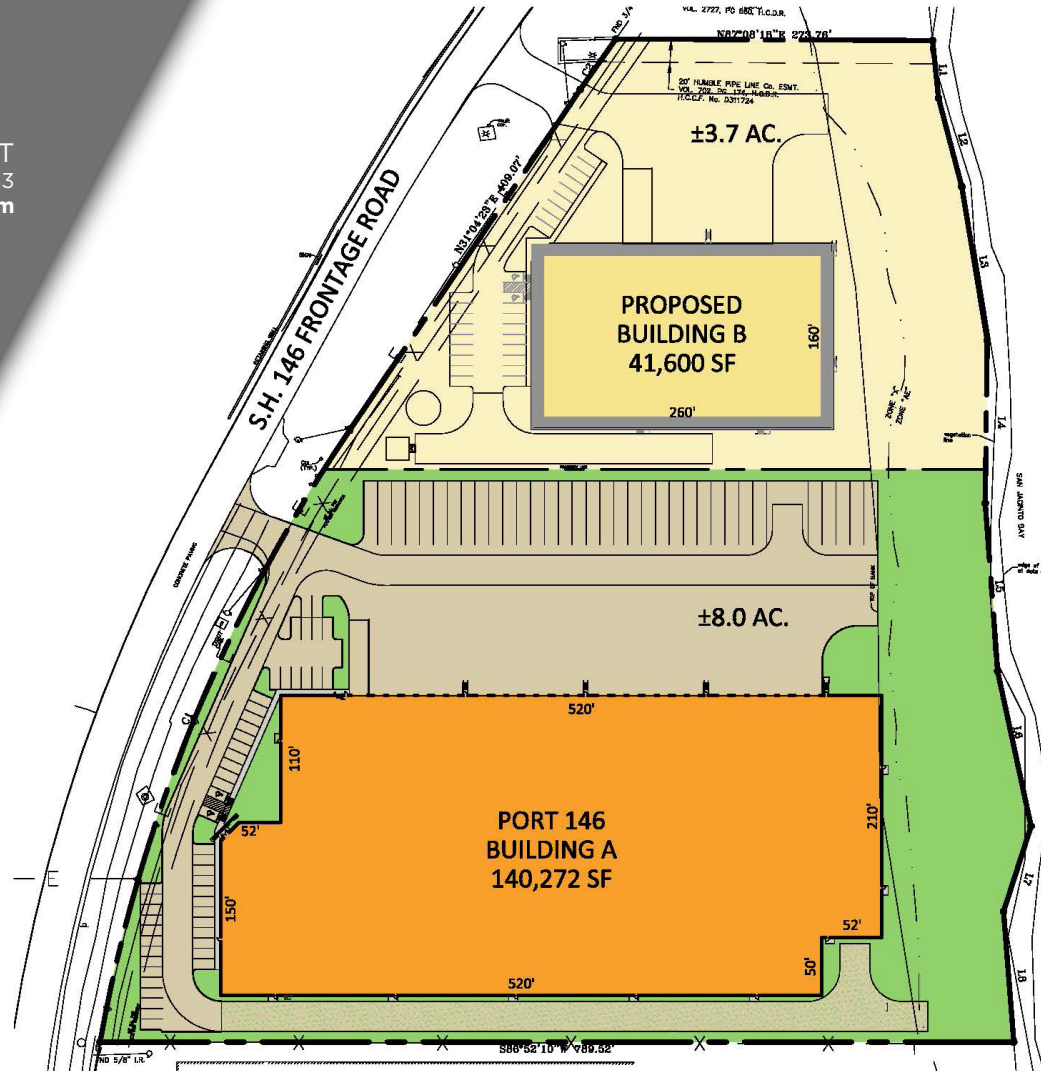
JASON DILLEE
713 345 1432
jason.dillee@cushwake.com

1330 Post Oak Blvd, Suite 2700
Houston, TX 77056
Main +1 713 877 1700
cushmanwakefield.com

SITE PLAN
+140,272 sq. ft.

ANDREW JEWETT
 713 345 1433
 andrew.jewett@cushwake.com

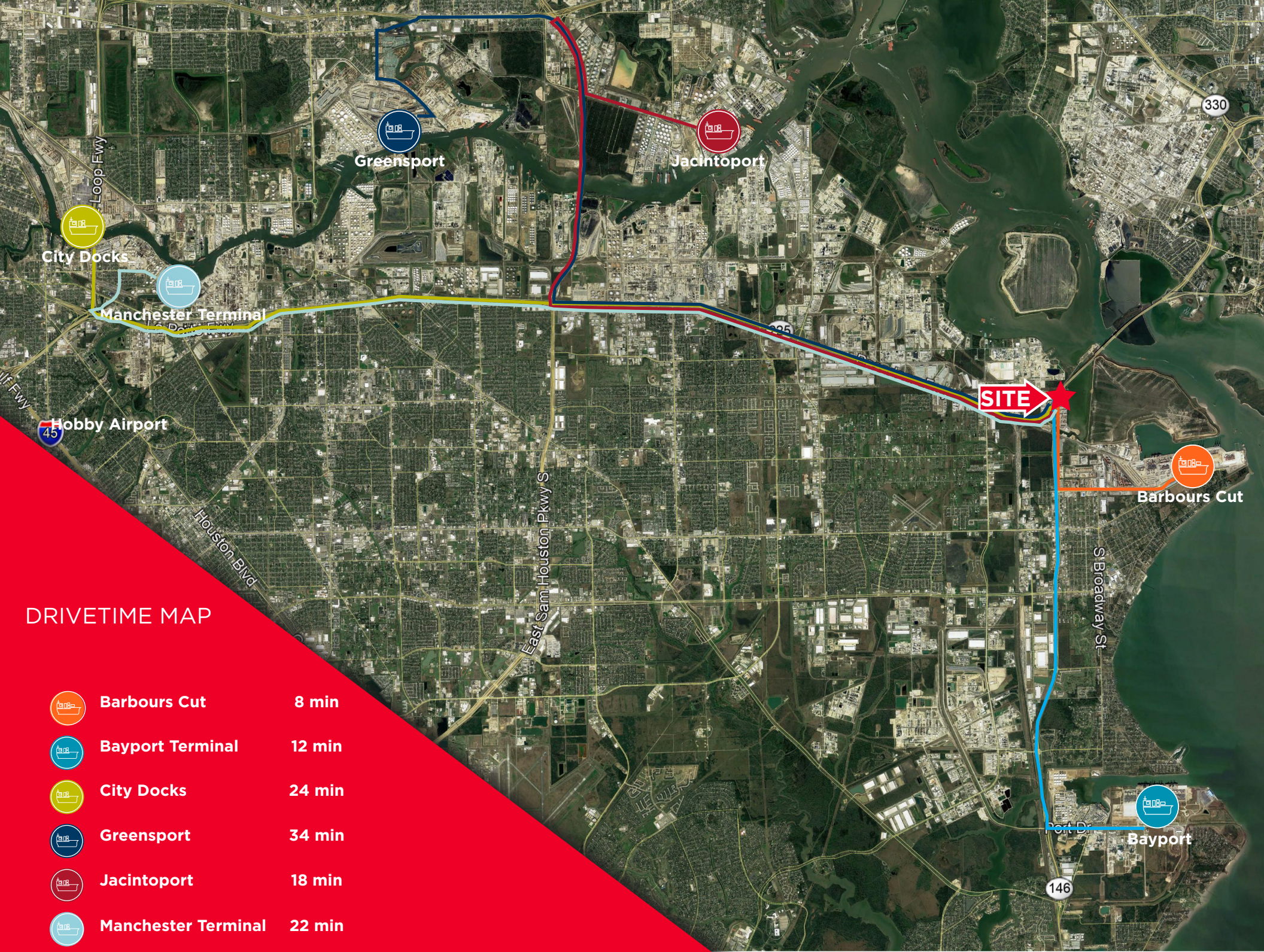
JASON DILLEE
 713 345 1432
 jason.dillee@cushwake.com




NOTE: PROPOSED PARK SITE PLAN, SUBJECT TO CHANGE

- KEY**
- LEASE SPACE AVAILABLE
 - LAND AVAILABLE
 - PROPOSED BUILDING / LAND AVAILABLE
 - LEASED/SOLD BUILDING

1330 Post Oak Blvd, Suite 2700
 Houston, TX 77056
 Main +1 713 877 1700
 cushmanwakefield.com



DRIVETIME MAP

-  **Barbours Cut** 8 min
-  **Bayport Terminal** 12 min
-  **City Docks** 24 min
-  **Greensport** 34 min
-  **Jacintoport** 18 min
-  **Manchester Terminal** 22 min