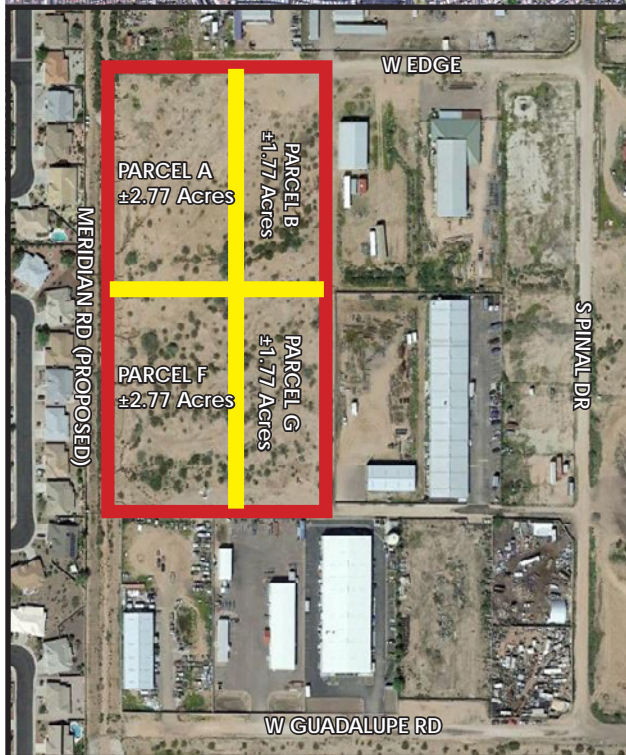
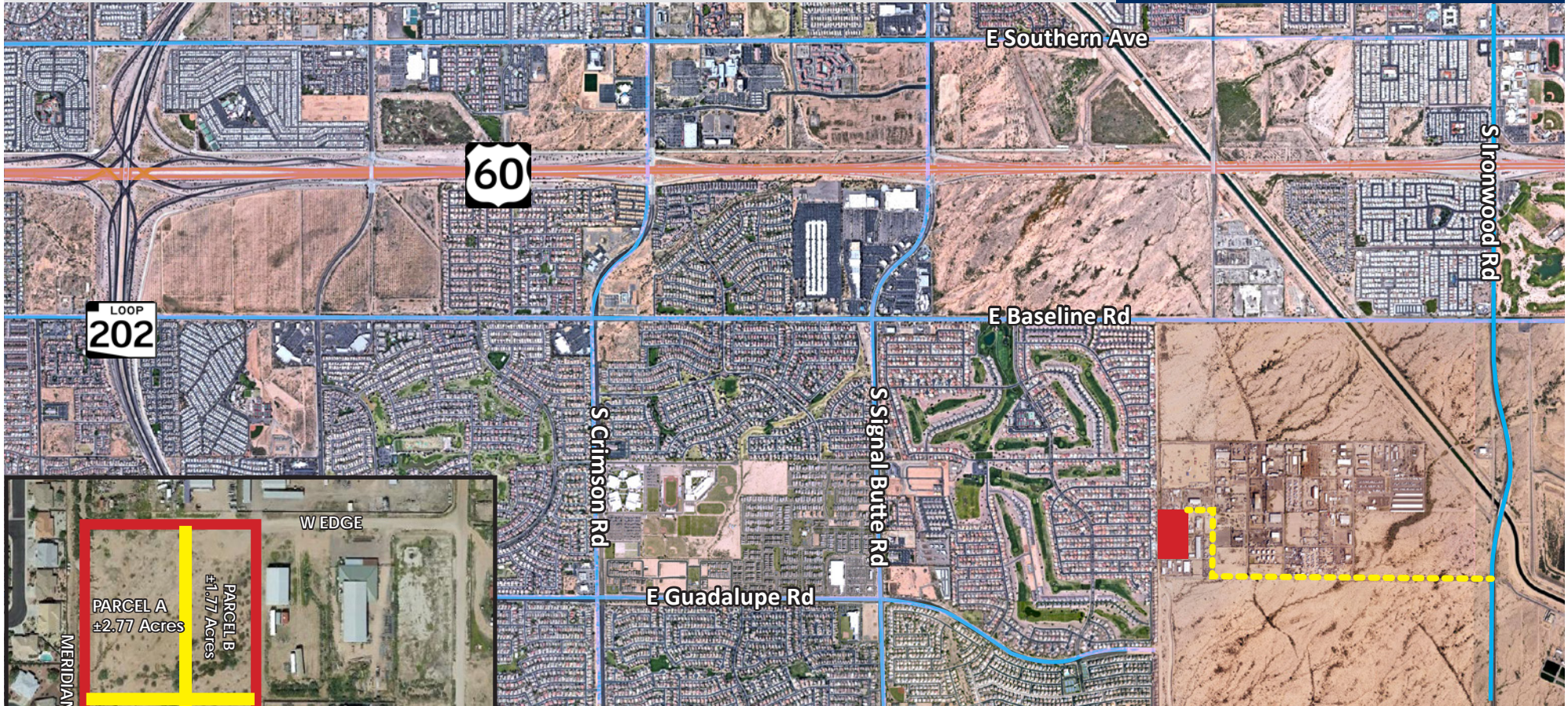


3350 West Edge, Apache Junction, AZ

9.17 Acres - Divisible Into 4 Parcels | Zoned LI Industrial

INDUSTRIAL LAND

AVAILABLE FOR SALE



Property Features:

- Entire Parcel: ±9.17 Acres
- Total Sales Price: **\$2,063,000** (\$5.16/SF)
- Parcel A: ±2.77 Acres - **\$724,000** (\$6.00/SF)
- Parcel B: ±1.77 Acres - **\$307,600** (\$3.99/SF)
- Parcel F: ±2.77 Acres - **\$724,000** (\$6.00/SF)
- Parcel G: ±1.77 Acres - **\$307,800** (\$3.99/SF)

- Zoning: L-1, Pinal County Island
- Located at Baseline & Ironwood
- SRP Power
- Industrial/Retail Use (Subject To Zoning)
- Frontage To Be Built on Meridian

Exclusive Contacts

Andy Jaffe
D 480.214.1132
M 602.330.8777
ajaffe@cpiaz.com

Rex Griswold
M 480.244.7222
rgriswold@cpiaz.com



COMMERCIAL PROPERTIES INC.

Locally Owned. Globally Connected. CFPAC International

TEMPE: 2323 W. University Drive, Tempe, AZ 85281 | 480.966.2301
SCOTTSDALE: 8777 N. Gainey Center Dr., Suite 245, Scottsdale, AZ 85258 | www.cpiaz.com

The information contained herein has been obtained from various sources. We have no reason to doubt its accuracy; however, J & J Commercial Properties, Inc. has not verified such information and makes no guarantee, warranty or representation about such information. The prospective buyer or lessee should independently verify all dimensions, specifications, floor plans, and all information prior to the lease or purchase of the property. All offerings are subject to prior sale, lease, or withdrawal from the market without prior notice. Effective 04 25 19