

4301 WESTERN ROAD
FLINT, MICHIGAN



**SIGNATURE
ASSOCIATES**
KNOW SIGNATURE | KNOW RESULTS

INDUSTRIAL FOR SALE OR LEASE
28,240 Square Feet Available



PROPERTY FEATURES

- 28,240 square feet available
- 2,240 square feet of office
- 18'-24' clear height
- (3) 10x10, 14x14 grade level doors
- Zoned Light Industrial
- Large Lot
- 1.14 acres
- Lease Rate: \$4.00/sq.ft. NNN
- Sale Price: \$900,000 (\$31.87/sq.ft.)



For more information, please contact:

GARY STEPHENS
(248) 948 0104
gstephens@signatureassociates.com

RICK BIRDSALL
(248) 799 3145
rbirdsall@signatureassociates.com

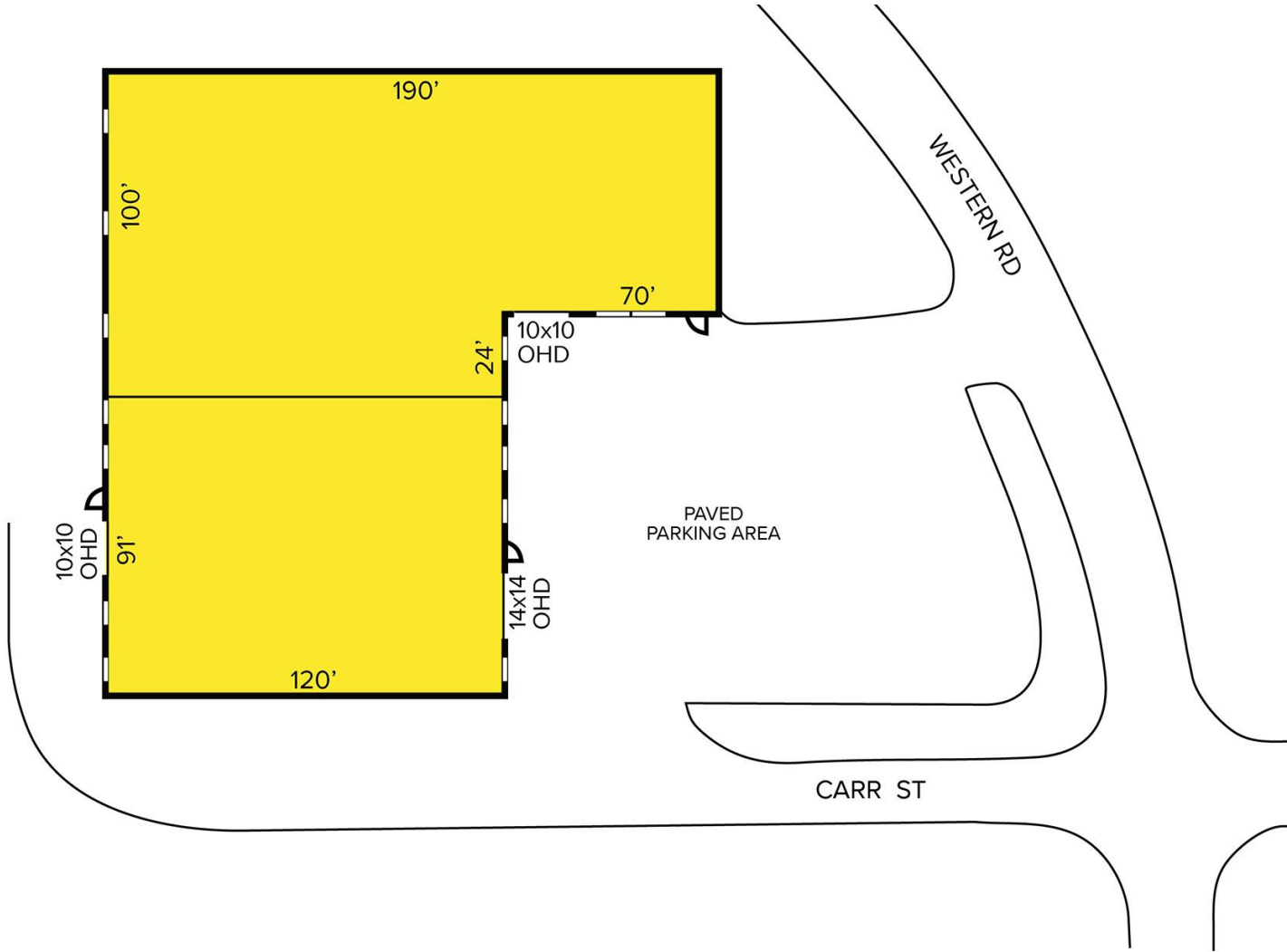
SIGNATURE ASSOCIATES
One Towne Square, Suite 1200
Southfield, MI 48076
www.signatureassociates.com

4301 Western Road – Flint, Michigan

Industrial For Sale or Lease

28,240
Square Feet
AVAILABLE

Site Plan



For more information, please contact:

GARY STEPHENS
(248) 948 0104
gstephens@signatureassociates.com

RICK BIRDSALL
(248) 799 3145
rbirdsall@signatureassociates.com

SIGNATURE ASSOCIATES
One Towne Square, Suite 1200
Southfield, MI 48076
www.signatureassociates.com

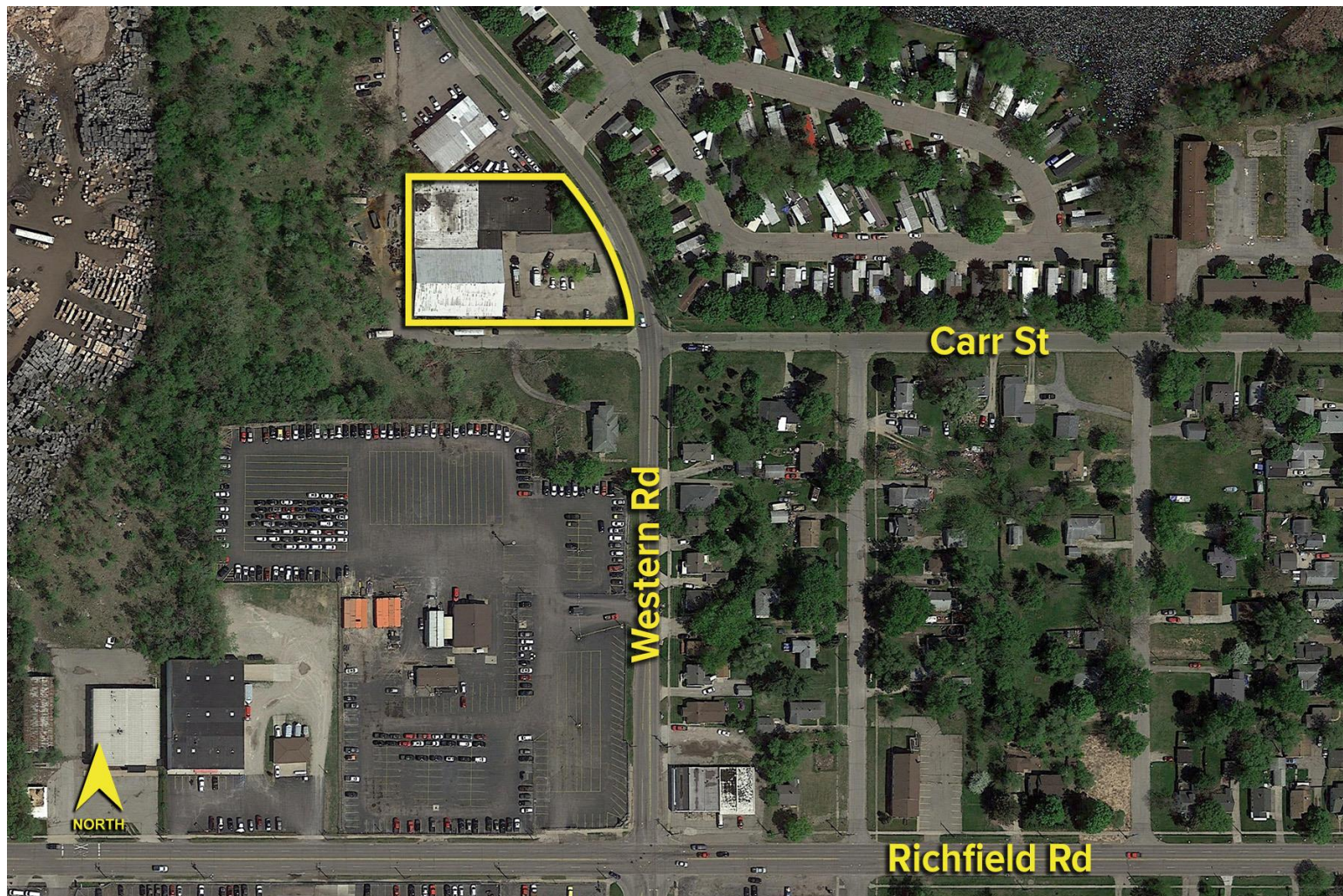
Information is subject to verification and no liability for errors or omissions is assumed. Price is subject to change and listing withdrawal.

4301 Western Road – Flint, Michigan

Industrial For Sale or Lease

28,240
Square Feet
AVAILABLE

Aerial



For more information, please contact:

GARY STEPHENS

(248) 948 0104

gstephens@signatureassociates.com

RICK BIRDSALL

(248) 799 3145

rbirdsall@signatureassociates.com

SIGNATURE ASSOCIATES

One Towne Square, Suite 1200

Southfield, MI 48076

www.signatureassociates.com