



**MID FLORIDA
LOGISTICS PARK**

**FOR
LEASE/
BTS/
SALE**

Developed By:



**BLUESCOPE
PROPERTIES GROUP**

MID FLORIDA LOGISTICS PARK

APOPKA, ORANGE COUNTY, FL | 160,000 TO 1,025,000 SF



CITE PARTNERS

DEVELOPMENT OVERVIEW

Mid Florida Logistics Park is a Class A industrial park located in the city of Apopka with immediate access to the Western Beltway (Toll Road 429) and US Highway 441 (Orange Blossom Trail). Apopka has a number of amenities surrounding Mid Florida Logistics Park, which includes rail access - one of the only locations in Orlando with active rail to the site.

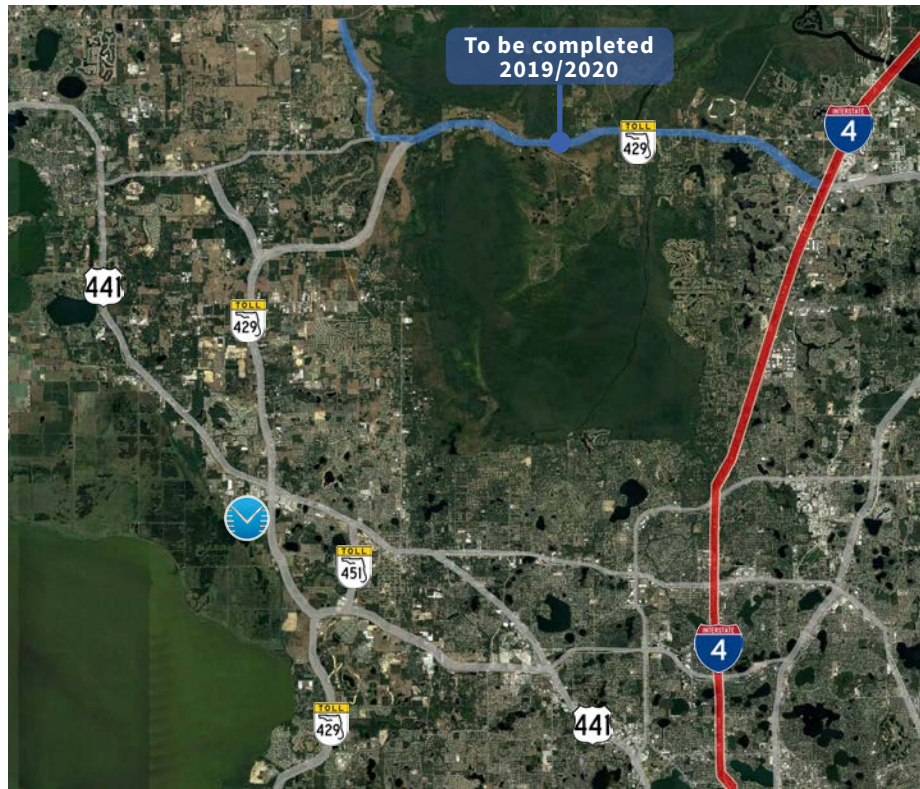
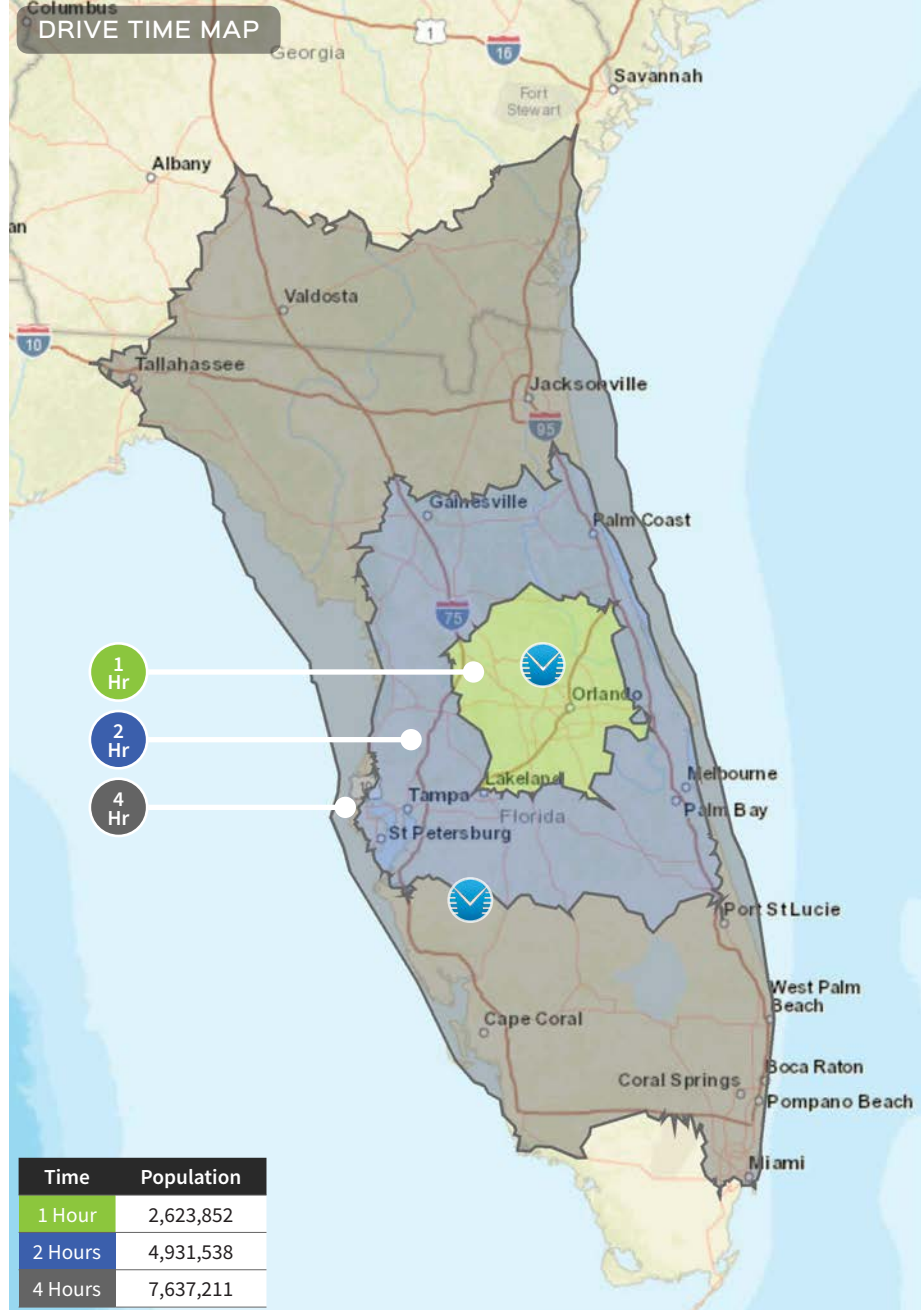
PROPERTY SPECIFICATIONS

- Building sizes range from 160,000 to 1,200,000 SF
- Development total of over 2,500,000 SF
- Build-to-suit office
- Clear height of 30'+
- Dock high and grade level access
- Cross dock and rear load
- Tilt wall construction
- Rail served
- 143.51 acres
- 2,425' of frontage on the Western Beltway (SR 429)
- Zoned I-1, Restricted Industrial, City of Apopka

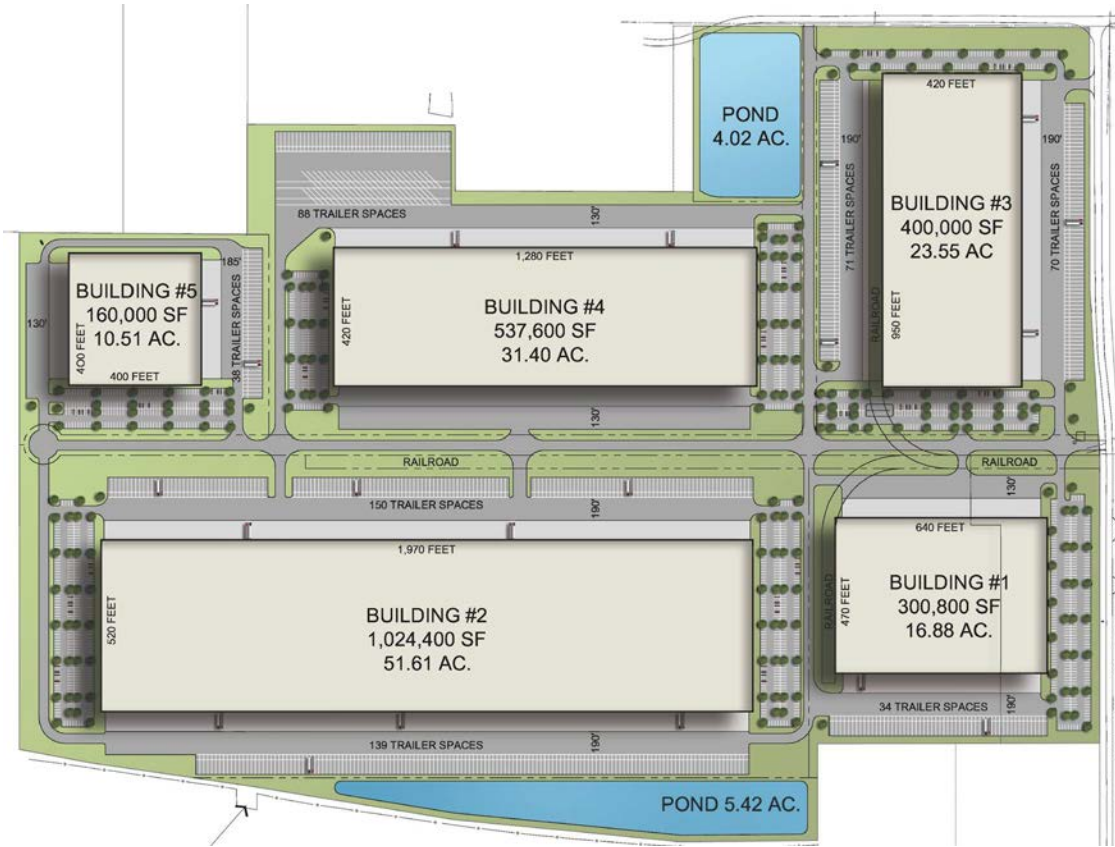
WHY MID FLORIDA LOGISTICS PARK?

Mid Florida Logistics Park offers users immediate access to highways, an abundant amount of amenities, an excellent labor force, and higher quality of life for employees. Located in Northwest Orange County, one of the fastest growing, highly desirable submarkets in Orlando, Mid Florida Logistics Park offers users many amenities that other sites cannot offer. Other benefits include:

- ▶ Immediate Access to Highways
- ▶ Proximity to Labor
- ▶ Proximity to Customers
- ▶ Proximity to Executive Housing
- ▶ Frontage on 429
- ▶ Local Amenities
- ▶ Flexible Deal Structure

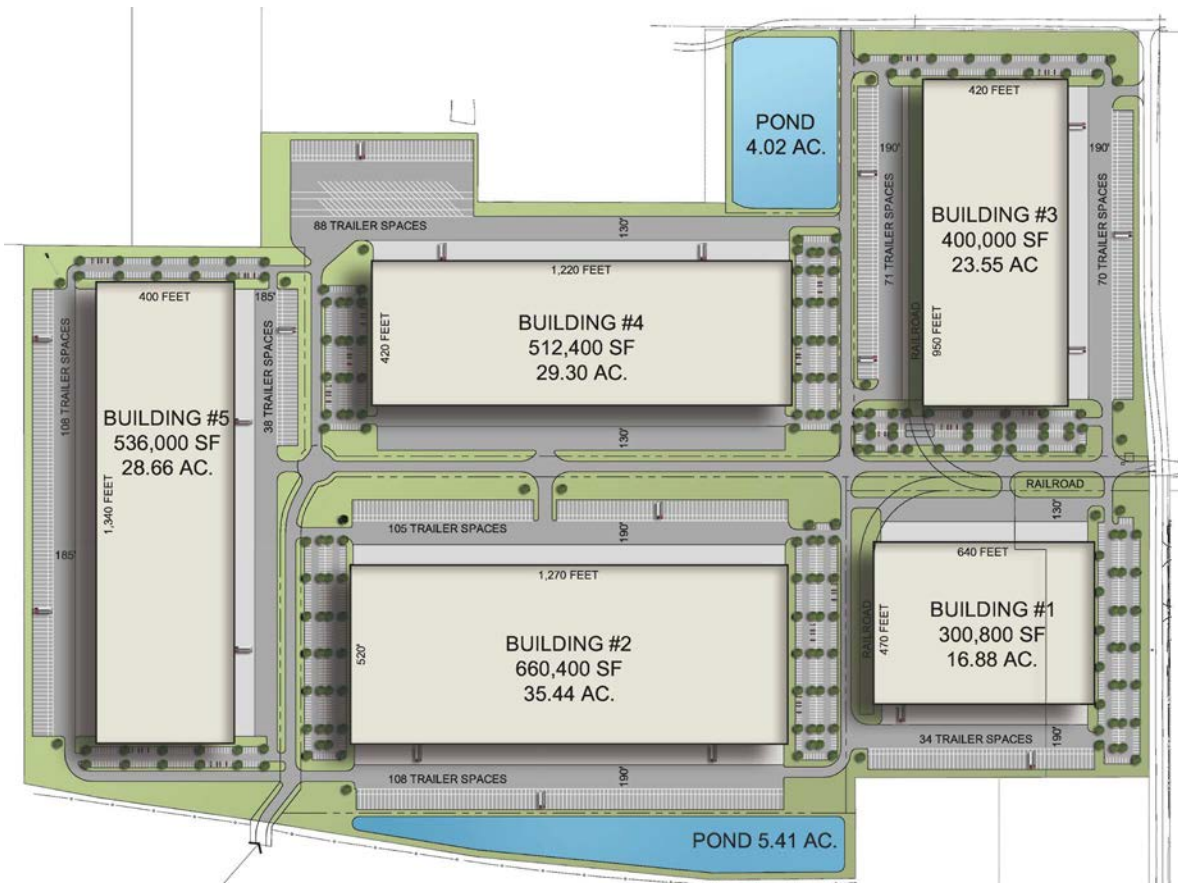


OPTION 1



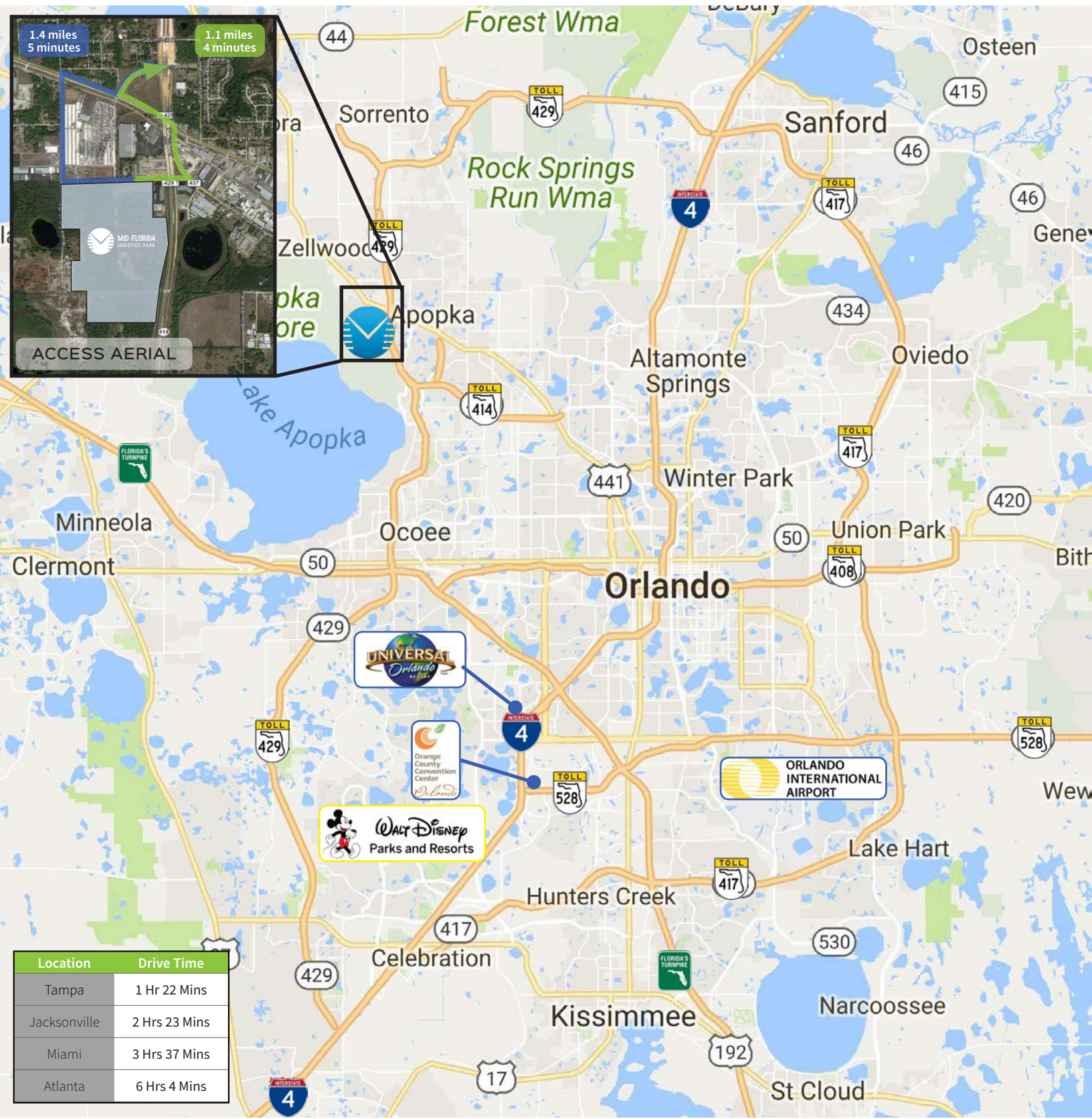
- Building 1**
 - 300,800 SF
 - BTS office
 - 470' building depth
 - 130'-190' truck courts
 - 34 trailer spaces
- Building 2**
 - 1,024,400 SF
 - BTS office
 - 520' building depth
 - 190' truck courts
 - 289 trailer spaces
- Building 3**
 - 400,000 SF
 - BTS office
 - 420' building depth
 - 190' truck courts
 - 141 trailer spaces
- Building 4**
 - 537,600 SF
 - BTS office
 - 420' building depth
 - 130' truck courts
 - 88 trailer spaces
- Building 5**
 - 160,000 SF
 - BTS office
 - 400' building depth
 - 130'-185' truck courts
 - 38 trailer spaces

OPTION 2



- Building 1**
 - 300,800 SF
 - BTS office
 - 470' building depth
 - 130'-190' truck courts
 - 34 trailer spaces
- Building 2**
 - 660,400 SF
 - BTS office
 - 520' building depth
 - 190' truck courts
 - 213 trailer spaces
- Building 3**
 - 400,000 SF
 - BTS office
 - 420' building depth
 - 190' truck courts
 - 141 trailer spaces
- Building 4**
 - 512,400 SF
 - BTS office
 - 420' building depth
 - 130' truck courts
 - 88 trailer spaces
- Building 5**
 - 536,000 SF
 - BTS office
 - 400' building depth
 - 185' truck court
 - 146 trailer spaces

Mid Florida Logistics Park



Location	Drive Time
Tampa	1 Hr 22 Mins
Jacksonville	2 Hrs 23 Mins
Miami	3 Hrs 37 Mins
Atlanta	6 Hrs 4 Mins

MATT SULLIVAN, SIOR, CCIM
 Managing Director, Principal
matt.sullivan@citepartners.com
 407.930.1802

WILSON MCDOWELL, SIOR, CCIM
 Managing Director, Principal
wilson.mcdowell@citepartners.com
 407.930.1801

BOBBY ISOLA, SIOR, CCIM
 Director, Principal
bobby.isola@citepartners.com
 407.930.1804

CITE PARTNERS
 100 East Pine St., Suite 200
 Orlando, FL 32801
www.citepartners.com

Disclaimer: This document has been prepared by Cite Partners for advertising and general information only. Cite Partners makes no guarantees, representations or warranties of any kind, expressed or implied, regarding the information including, but not limited to, warranties of content, accuracy and reliability. Any interested party should undertake their own inquiries as to the accuracy of the information. Cite Partners excludes unequivocally all inferred or implied terms, conditions and warranties arising out of this document and excludes all liability for loss and damages arising therefrom. This publication is the copyrighted property of Cite Partners and/or its licensor(s). All rights reserved.