

MEDICAL OFFICE BUILDING AVAILABLE

450 Lanier Road • Madison, AL 35758

SALE or LEASE

450 Lanier Road
Madison, AL 35758

BUILDING SIZE

- 26,315 SF
- 5.84 acres

MINIMUM DIVISIBLE FOR LEASE

8,000 SF

COMMENTS

- Medical office facility
- One story building with two covered entrances
- Ample paved surface parking
- Ideally suited for medical use with reception/waiting area, accounting area, small break-out meeting rooms and patient care rooms

PRICING

~~\$3,800,000~~ ~~\$3,200,000~~ \$2,950,000

Call for Lease Pricing

EXCLUSIVE AGENTS

Bart Smith, CCIM, SIOR

barts@grahamcompany.com

Jeremy D. Pope, CCIM, SIOR

jeremyp@grahamcompany.com

256.382.9010



355 Quality Circle
Suite E
Huntsville, AL 35806

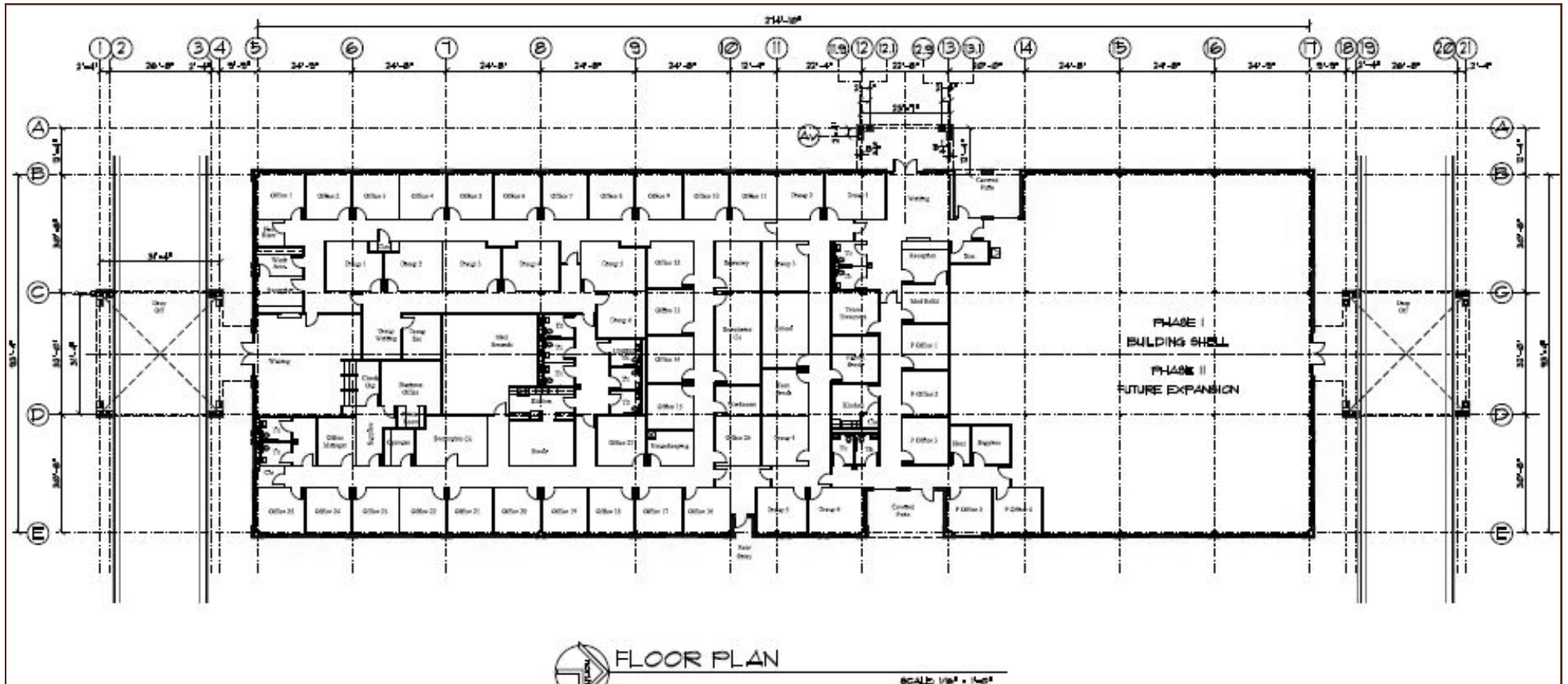
TEL 256.382.9010
FAX 256.382.9011
grahamcompany.com





MEDICAL OFFICE BUILDING AVAILABLE

450 Lanier Road • Madison, AL 35758



Information deemed reliable, but not guaranteed.

355 Quality Circle
Suite E
Huntsville, AL 35806

TEL 256.382.9010
FAX 256.382.9011
grahamcompany.com



Graham & Co