



**Available for Lease**

**±1,240 - ±3,360 SF**

# Power Inn Business Park Sacramento

**Fruitridge & Power Inn Road | Sacramento, CA**

## **Description**

Power Inn Business Park features over 12,000 square feet of Newly Renovated Office/Flex. Signage opportunities and suites with upgraded finishes, available for immediate occupancy.

Professional atmosphere, affordable rates, and prominent location make Power Inn Business Park an ideal location!

## **Property Features**

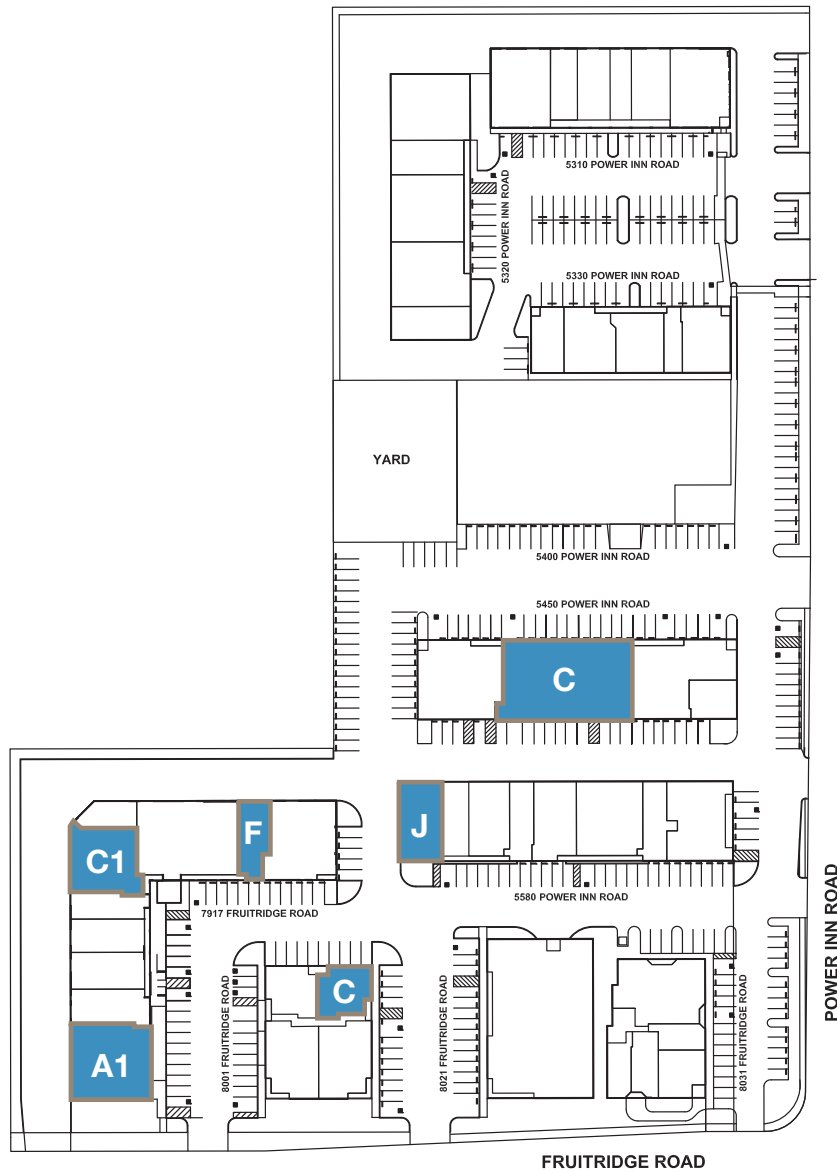
- Signage opportunities
- High visibility building
- Office & Flex Space
- 10' x 12' Overhead Door
- Zoned C-2



**For further information please contact us at (916) 381-8113 or [jacksonprop.com](http://jacksonprop.com)**

Broker participation is invited.

The information herein is provided from reliable sources; however, Jackson Properties, Inc. assumes no liability for accuracy. The individual broker or user should confirm the physical information for themselves. Prices subject to change without notice.



# Power Inn Business Park Sacramento, CA

Available Units	Total SF	Office	Monthly Rent
7917 Fruitridge Road, Suite F*	±1,240 SF	±320 SF	\$1,100.00 NNN
8001 Fruitridge Road, Suite C	±1,600 SF	±540 SF	\$1,360.00 NNN
5580 Power Inn Road, Suite J	±1,900 SF	±250 SF	\$1,615.00 NNN
7917 Fruitridge Road, Suite C1	±2,460 SF	None	\$1355.00 NNN
5450 Power Inn Road, Suite C	±3,357 SF	±3,357 SF	\$3,190.00 NNN
7917 Fruitridge Road, Suite A1	±3,360 SF	±3,360 SF	\$3,195.00 NNN



For further information please contact us at (916) 381-8113 or [jacksonprop.com](http://jacksonprop.com)

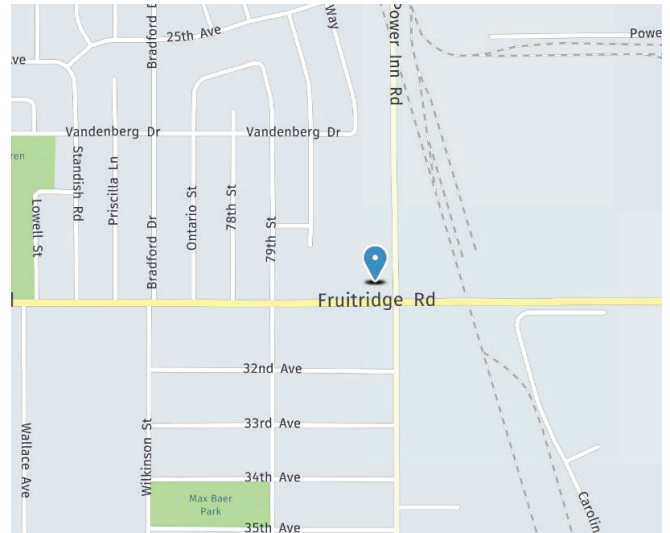
Broker participation is invited.

The information herein is provided from reliable sources; however, Jackson Properties, Inc. assumes no liability for accuracy. The individual broker or user should confirm the physical information for themselves. Prices subject to change without notice. Disclaimer for 3-5 lease rate.



# Office / Flex

Fruitridge & Power Inn Rd | Sacramento, CA

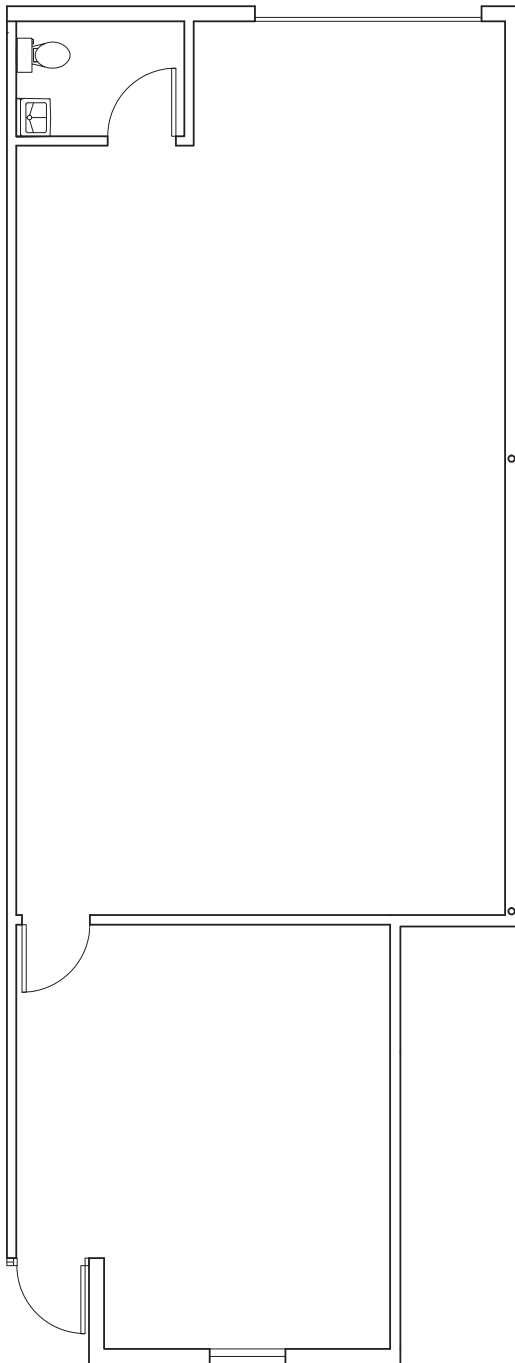


**JACKSON**  
PROPERTIES, INC.

For further information please contact us at (916) 381-8113 or [jacksonprop.com](http://jacksonprop.com)

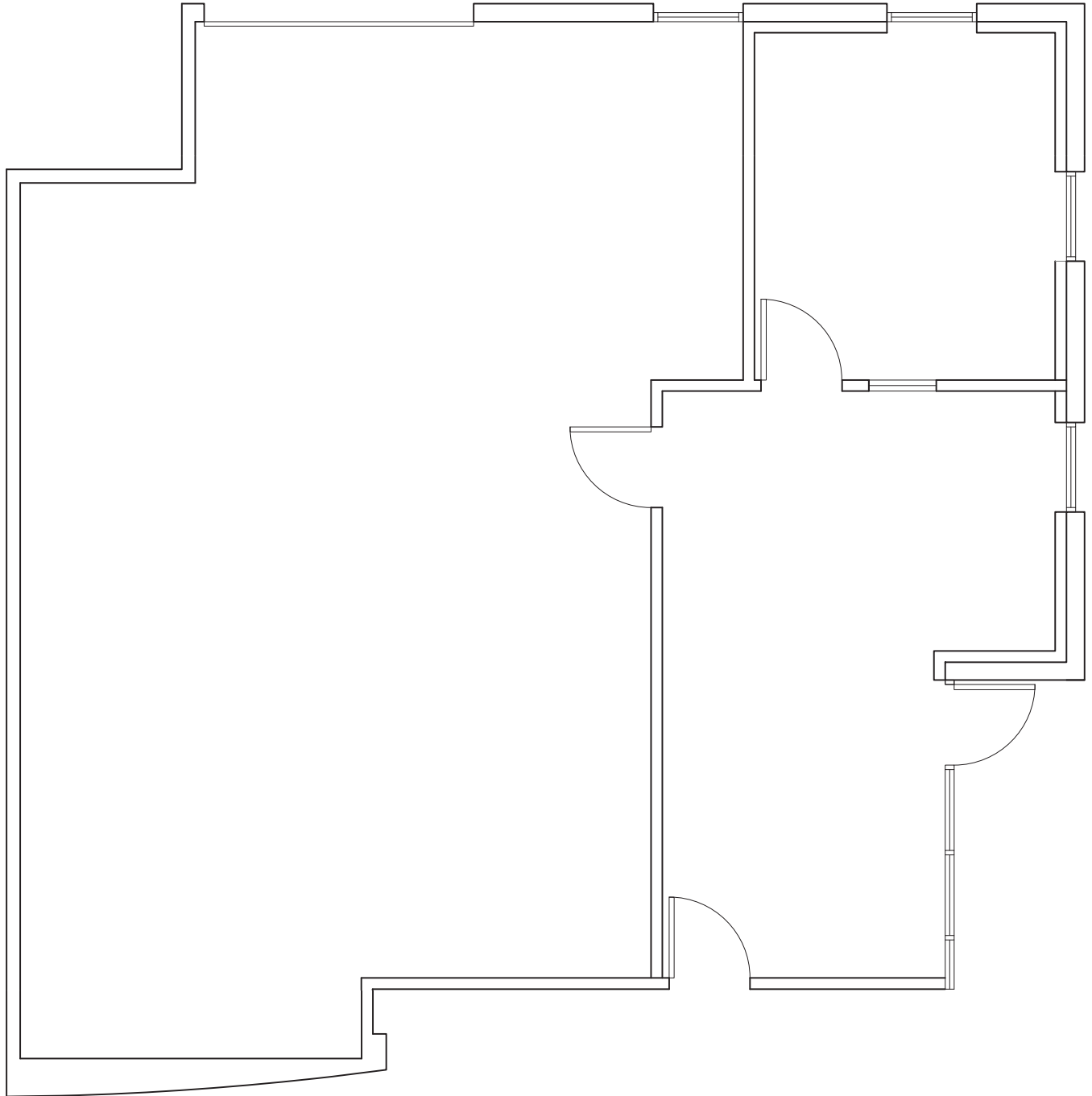
# 7917 Fruitridge Road, Sacramento

## Suite F ±1,240 SF



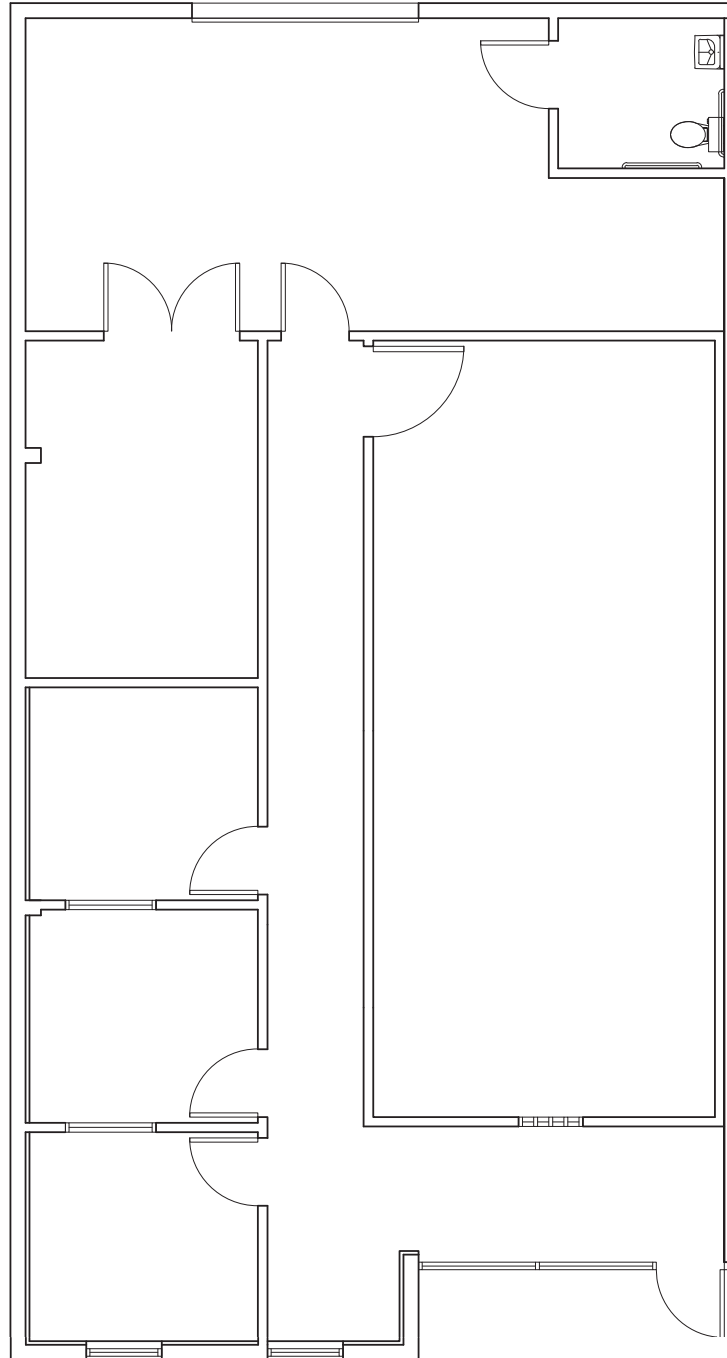
# 8001 Fruitridge Road, Sacramento

## Suite C ±1,600 SF



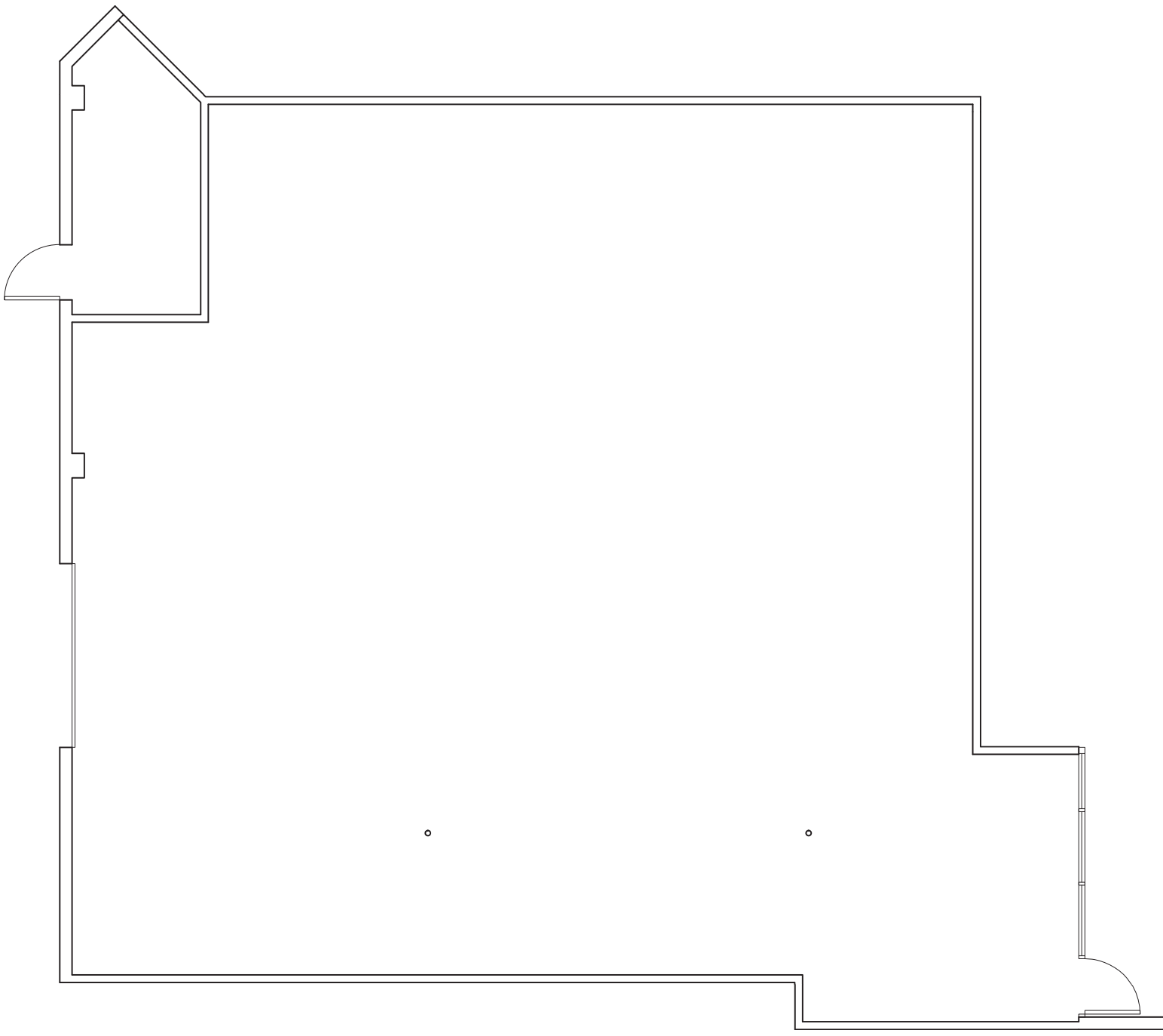
# 5580 Power Inn Road, Sacramento

## Suite J ±1,900 SF



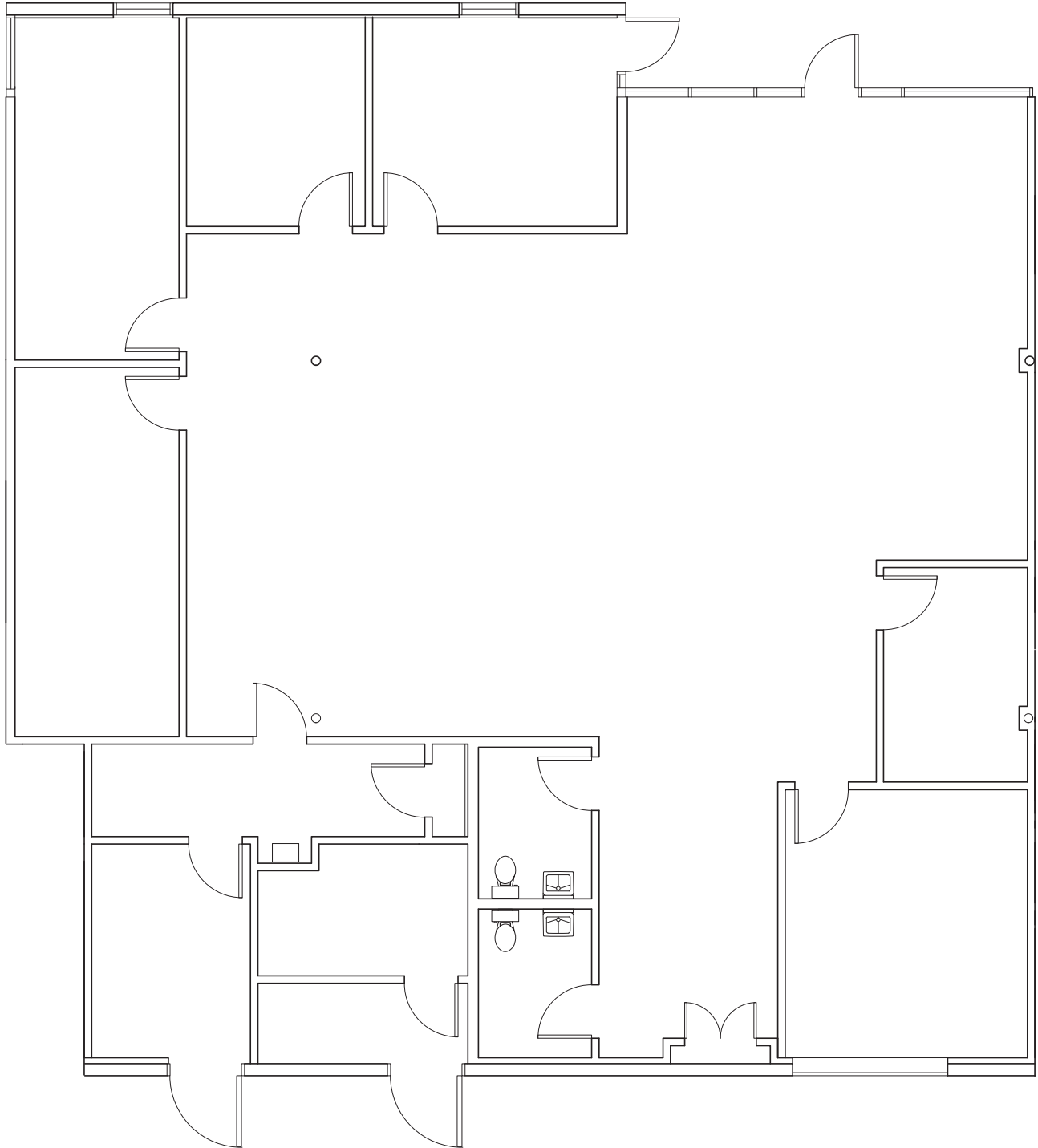
# 7917 Fruitridge Road, Sacramento

## Suite C1 ±2,460 SF



# 5450 Power Inn Road, Sacramento

## Suite C ±3,357 SF





# 7917 Fruitridge Road, Sacramento

Suite A1 ±3,360 SF

