

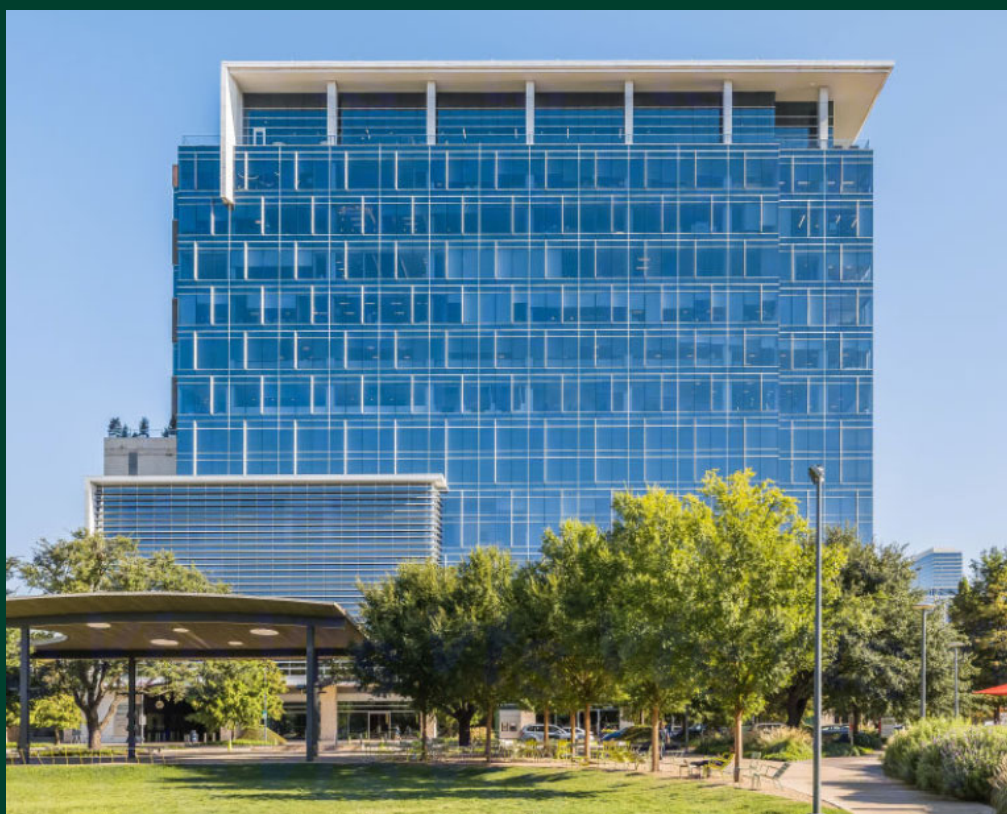
2925 RICHMOND AVENUE

15th Floor – Up to 1,765 RSF

2925 Richmond Avenue
Houston, TX 77098

Building/Space Highlights

- Located in the prestigious Kirby Grove, next to Levy Park
- On-site restaurant, café, bar and hair salon
- Courtyard with outdoor seating
- Lobby attendant
- Close proximity to dining, retail and high-end residential
- Availability – Immediate
- Lease Term through October 31, 2028
- Net Rate: Negotiable
- 2023 Estimated Opex: \$26.35/RSF
- TI Allowance: As-Is
- FF&E Available: 7 cubicles, up to 4 offices
- Unreserved Parking: 3.5/1,000 RSF



Office For Sublease

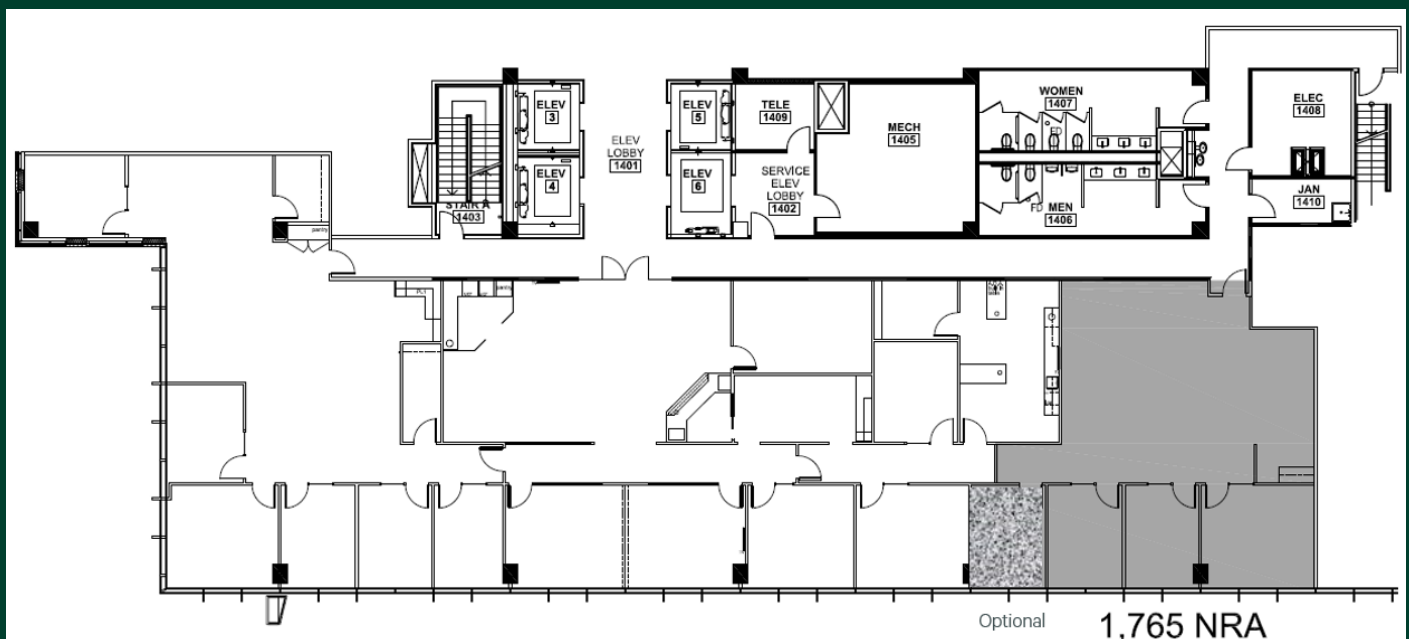
2925 Richmond Avenue



Office For Sublease

2925 Richmond Avenue

15th Floor, Suite 1500 Up to 1,765 RSF



Leasing Information

Rich Pancioli
Executive Vice President
713.881.0987
rich.pancioli@cbre.com

Jay Berry
Vice President
713.881.0935
jay.berry@cbre.com

Claire Douthit
Transaction Manager
713.881.0949
claire.douthit@cbre.com

© 2023 CBRE, Inc. All rights reserved. This information has been obtained from sources believed reliable, but has not been verified for accuracy or completeness. You should conduct a careful, independent investigation of the property and verify all information. Any reliance on this information is solely at your own risk. CBRE and the CBRE logo are service marks of CBRE, Inc. All other marks displayed on this document are the property of their respective owners, and the use of such logos does not imply any affiliation with or endorsement of CBRE. Photos herein are the property of their respective owners. Use of these images without the express written consent of the owner is prohibited.

CBRE