

FOR SALE

1106 39TH AVE SE

PUYALLUP, WA 98374

\$1,475,000



PROPERTY FEATURES

Fantastic and rare light industrial or flex owner/user opportunity located minutes from South Hill retail core and the SR-512 and SR-167 regional freeway systems.

- + 9,510 total SF
- + 3,510 total SF office/showroom
- + 822 total SF mezzanine storage
- + Zoning: Limited Manufacturing, City of Puyallup
- + Four 14' x12' grade-level doors
- + Three-phase power
- + 18' warehouse clear height
- + Warehouse floor drains
- + Insulated warehouse throughout
- + Existing air and water lines



CONTACT US

CHRIS COWLES

Associate
+1 253 596 0041
chris.cowles@cbre.com

MONTE DECKER

First Vice President
+1 253 596 0048
monte.decker@cbre.com

CBRE, INC

1201 Pacific Ave
Suite 1502
Tacoma, WA 98402

www.cbre.us/tacoma

CBRE

FOR SALE 1106 39TH AVE SE

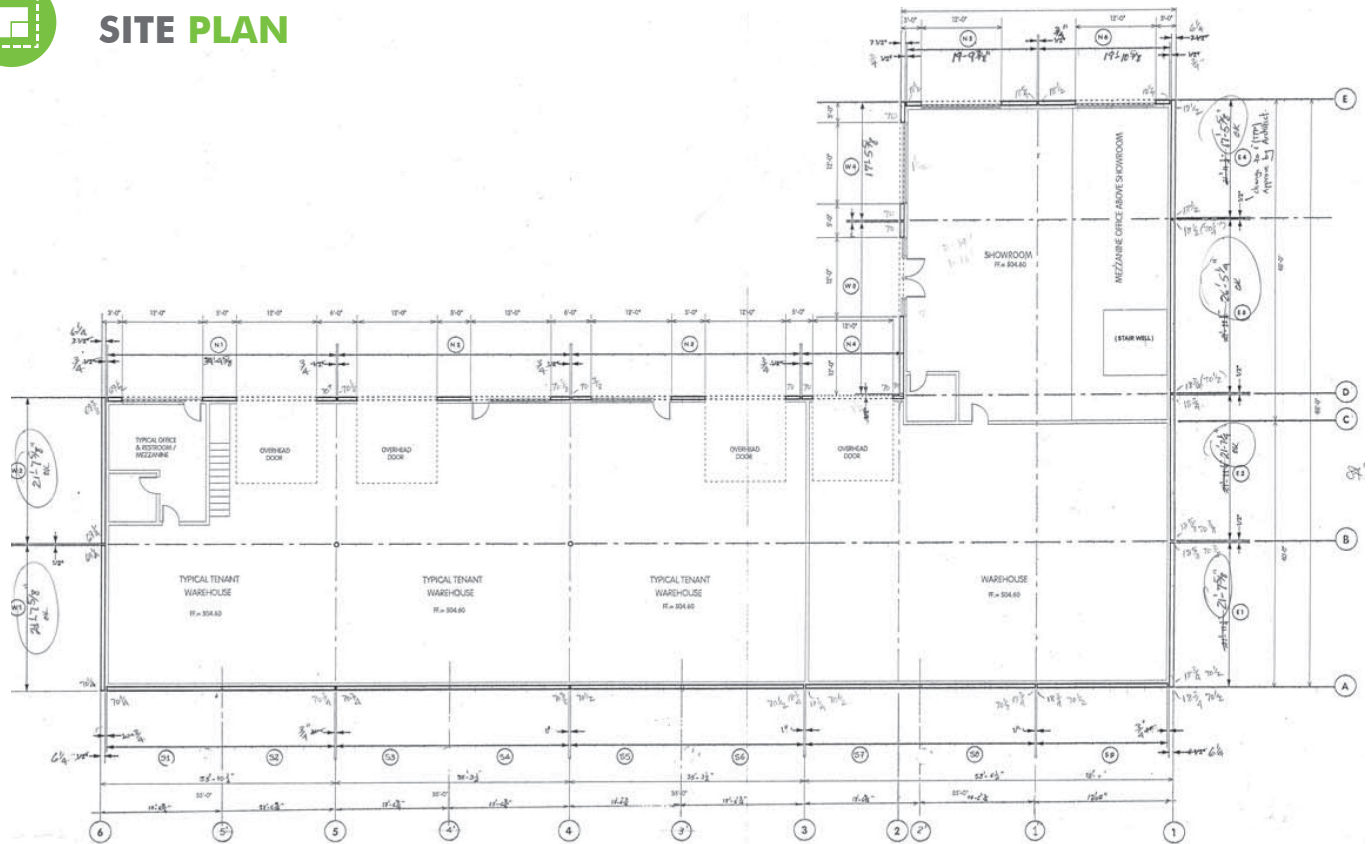
Puyallup, WA 98374



PROPERTY PHOTOS



SITE PLAN

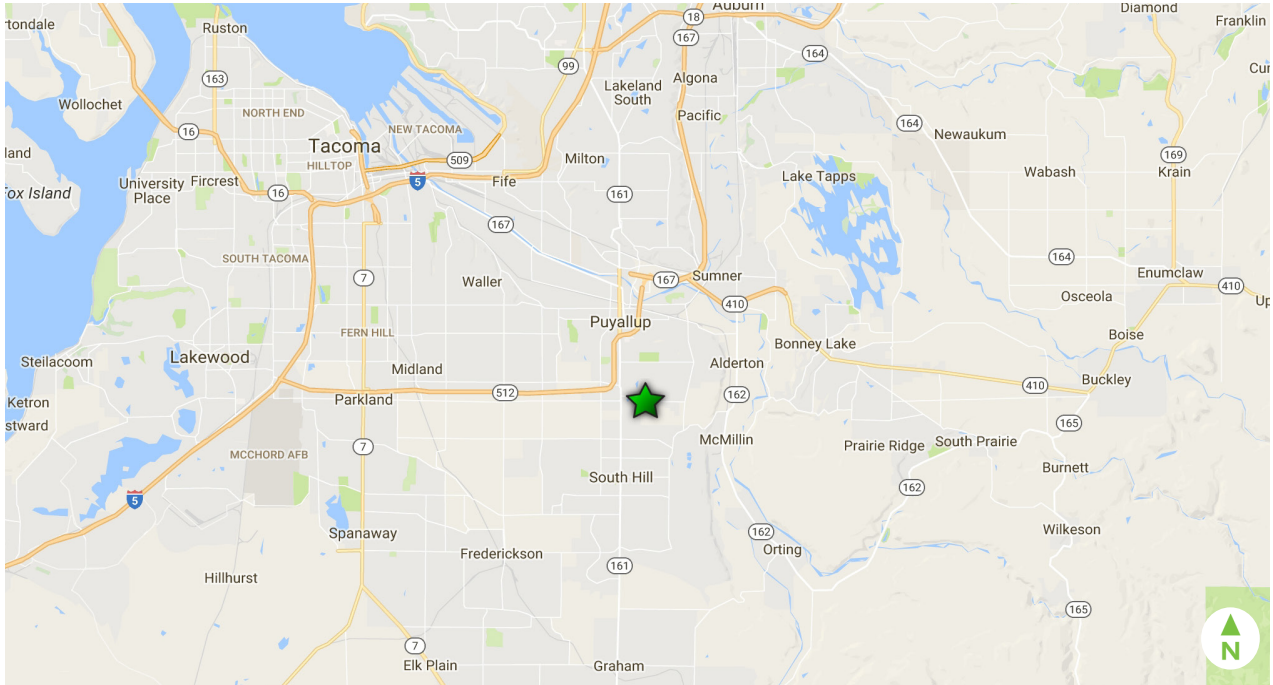


FOR SALE 1106 39TH AVE SE

Puyallup, WA 98374



PROPERTY LOCATION



SITE SPECIFICATIONS

Suite #	Warehouse	Showroom	1st Floor Office	Mezzanine Office	Mezzanine Storage
500	2,238	1,968	274	720	-
300	1,254	-	274	-	274
200	1,254	-	274	-	274
100	1,254	-	274	-	274
Total SF:	6,000	1,968	822	720	822

FOR SALE 1106 39TH AVE SE

Puyallup, WA 98374



AMENITY AERIAL



© 2017 CBRE, Inc. All rights reserved. This information has been obtained from sources believed reliable, but has not been verified for accuracy or completeness. You should conduct a careful, independent investigation of the property and verify all information. Any reliance on this information is solely at your own risk. CBRE and the CBRE logo are service marks of CBRE, Inc. All other marks displayed on this document are the property of their respective owners. Photos herein are the property of their respective owners. Use of these images without the express written consent of the owner is prohibited. rb 07/07/17