

MILFORD SHOPPES

1064 OH-28, Milford, OH 45150

Retail Strip Center / For Lease



Terry Ohnmeis / Senior Associate / terry.ohnmeis@cushwake.com / +1 513 763 3059
Andrew Sellet / Senior Director / andrew.sellet@cushwake.com / +1 513 763 3053

**WE ARE
THE CENTER
OF RETAIL**

CUSHWAKERETAIL.COM



©2018 Cushman & Wakefield. All rights reserved. The information contained in this communication is strictly confidential. This information has been obtained from sources believed to be reliable but has not been verified. NO WARRANTY OR REPRESENTATION, EXPRESS OR IMPLIED, IS MADE AS TO THE CONDITION OF THE PROPERTY (OR PROPERTIES) REFERENCED HEREIN OR AS TO THE ACCURACY OR COMPLETENESS OF THE INFORMATION CONTAINED HEREIN, AND SAME IS SUBMITTED SUBJECT TO ERRORS, OMISSIONS, CHANGE OF PRICE, RENTAL OR OTHER CONDITIONS, WITHDRAWAL WITHOUT NOTICE, AND TO ANY SPECIAL LISTING CONDITIONS IMPOSED BY THE PROPERTY OWNERS). ANY PROJECTIONS, OPINIONS OR ESTIMATES ARE SUBJECT TO UNCERTAINTY AND DO NOT SIGNIFY CURRENT OR FUTURE PROPERTY PERFORMANCE.

RETAIL SPACE

3,600 SF

RENT

\$23.00/psf NNN

NEIGHBORING TENANTS

Meijer, Kohl's, Home Depot, Starbucks, Panera Bread
AT&T, GameStop, Applebee's, Kroger and more

COMMENTS

- Former Sleep Outfitters Space
- Easy access to I-275
- Reserved monument sign panel
- High traffic - facing 24,000 vpd



NEIGHBORHOOD DEMOGRAPHICS



POPULATION

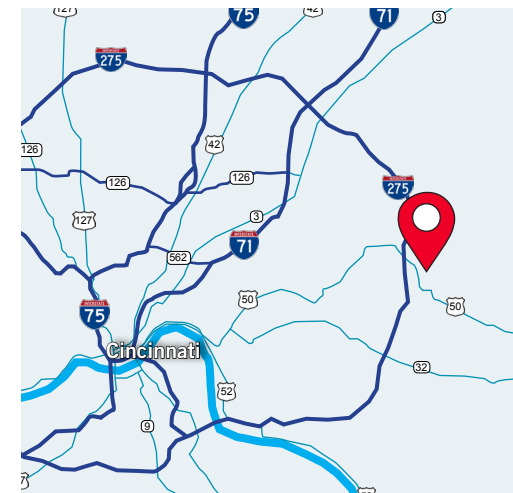


AVERAGE
HOUSEHOLD INCOME



DAYTIME
POPULATION

1 Mile	7,522	\$89,430	5,846
3 Miles	42,248	\$97,215	25,801
5 Miles	74,103	\$116,605	146,373



	 <p>Clarkson Eyecare</p>	<p>AVAILABLE 3,600 SF</p>	 <p>POWER TO THE PLAYERS®</p>	 <p>at&t</p>
---	---	-------------------------------	---	---

Retail Strip Center / For Lease

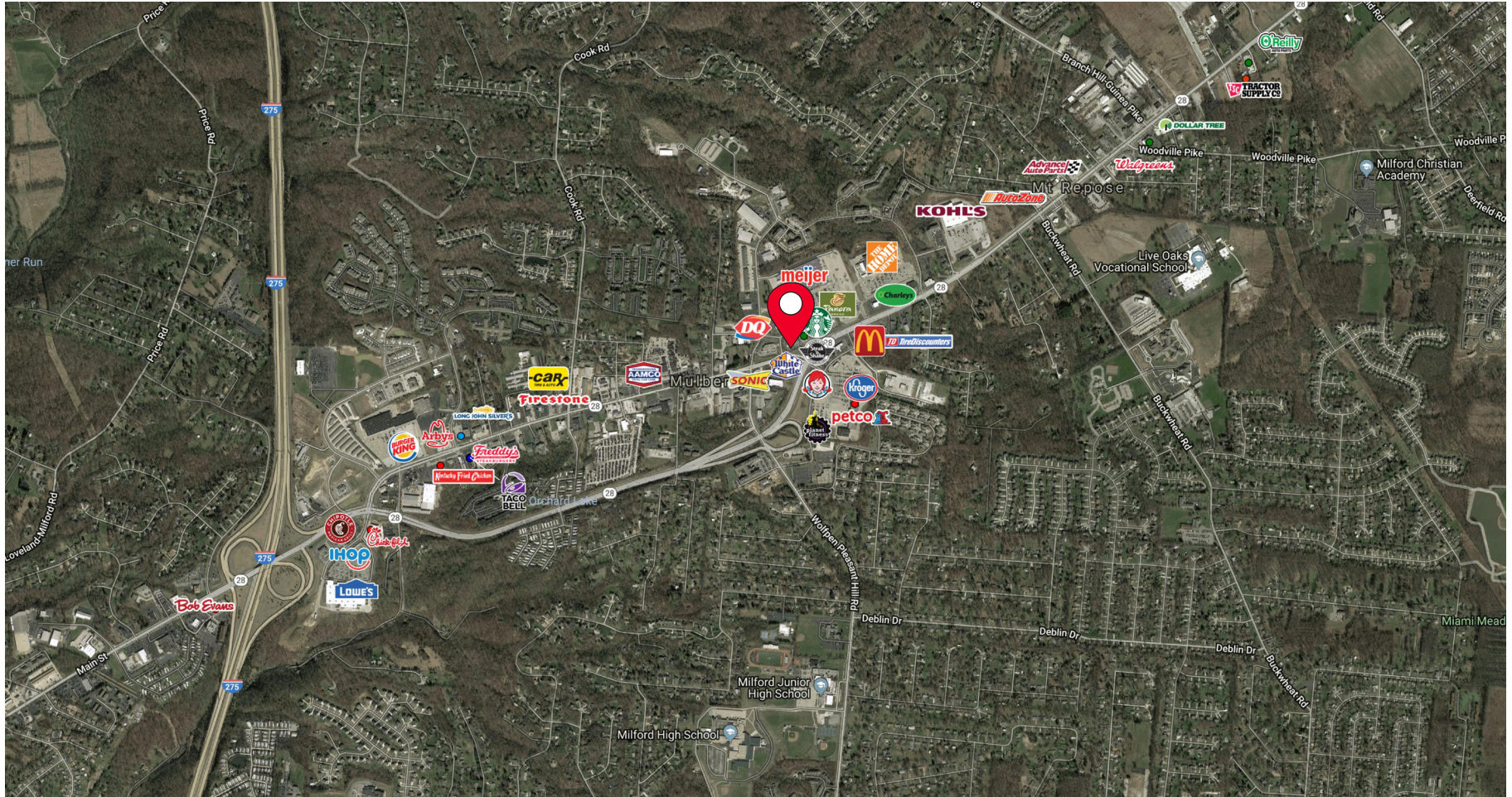


Terry Ohnmeis / Senior Associate / terry.ohnmeis@cushwake.com / +1 513 763 3059
Andrew Sellet / Senior Director / andrew.sellet@cushwake.com / +1 513 763 3053

©2018 Cushman & Wakefield. All rights reserved. The information contained in this communication is strictly confidential. This information has been obtained from sources believed to be reliable but has not been verified. NO WARRANTY OR REPRESENTATION, EXPRESS OR IMPLIED, IS MADE AS TO THE CONDITION OF THE PROPERTY (OR PROPERTIES) REFERENCED HEREIN OR AS TO THE ACCURACY OR COMPLETENESS OF THE INFORMATION CONTAINED HEREIN, AND SAME IS SUBMITTED SUBJECT TO ERRORS, OMISSIONS, CHANGE OF PRICE, RENTAL OR OTHER CONDITIONS, WITHDRAWAL WITHOUT NOTICE, AND TO ANY SPECIAL LISTING CONDITIONS IMPOSED BY THE PROPERTY OWNER(S). ANY PROJECTIONS, OPINIONS OR ESTIMATES ARE SUBJECT TO UNCERTAINTY AND DO NOT SIGNIFY CURRENT OR FUTURE PROPERTY PERFORMANCE.



Retail Strip Center / For Lease



Terry Ohnmeis / Senior Associate / terry.ohnmeis@cushwake.com / +1 513 763 3059
Andrew Sellet / Senior Director / andrew.sellet@cushwake.com / +1 513 763 3053

©2018 Cushman & Wakefield. All rights reserved. The information contained in this communication is strictly confidential. This information has been obtained from sources believed to be reliable but has not been verified. NO WARRANTY OR REPRESENTATION, EXPRESS OR IMPLIED, IS MADE AS TO THE CONDITION OF THE PROPERTY OR PROPERTIES REFERENCED HEREIN OR AS TO THE ACCURACY OR COMPLETENESS OF THE INFORMATION CONTAINED HEREIN, AND SAME IS SUBMITTED SUBJECT TO ERRORS, OMISSIONS, CHANGE OF PRICE, RENTAL OR OTHER CONDITIONS, WITHDRAWAL WITHOUT NOTICE, AND TO ANY SPECIAL LISTING CONDITIONS IMPOSED BY THE PROPERTY OWNER(S). ANY PROJECTIONS, OPINIONS OR ESTIMATES ARE SUBJECT TO UNCERTAINTY AND DO NOT SIGNIFY CURRENT OR FUTURE PROPERTY PERFORMANCE.