



# MEDICAL OFFICE CONDO SALE OR LEASE

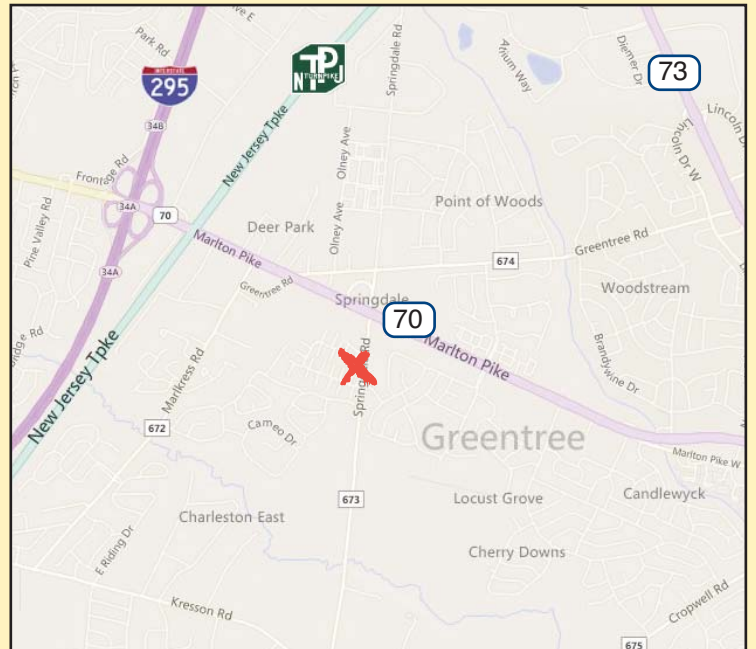
## 1765 SPRINGDALE ROAD C-1 CHERRY HILL, NJ

### EXCLUSIVE LISTING



#### Property Description: Medical Office Condo for Sale or Lease

- Size:** 1,720 +/- SF
- Block/Lot:** 472.01/2
- Lease Rate:** \$25.00/SF Plus Utilities
- Sale Price:** \$425,000.00
- Taxes:** \$12,122.00 (2017)
- Association Fee:** \$355/month
- Comments:**
  - Turn-Key Medical Office
  - Surround by Residential Neighborhoods & Professional Offices Districts
  - Easy Access to Route 70, I-295 & the NJ Turnpike



*For Further Information, Please Contact:*

**Brett Davidoff (ext. 27)**  
**(856) 985-9522**

**[bdavidoff@rosecommercial.com](mailto:bdavidoff@rosecommercial.com)**

ALL INFORMATION FURNISHED REGARDING PROPERTY FOR SALE, RENTAL OR FINANCING IS FROM SOURCES DEEMED RELIABLE, BUT NO WARRANTY OR REPRESENTATION IS MADE AS TO THE ACCURACY THEREOF AND SAME IS SUBMITTED SUBJECT TO ERRORS, OMISSIONS, CHANGE OF PRICE, RENTAL OR OTHER CONDITIONS, PRIOR SALE, LEASE OR FINANCING OR WITHDRAWAL WITHOUT NOTICE. NO LIABILITY OF ANY KIND IS TO BE IMPOSED ON THE BROKER HEREIN.

651 Route 73 North, Suite 111 • Marlton, NJ 08053 • Phone: (856) 985-9522 • Fax: (856) 985-9488



**MEDICAL OFFICE CONDO**

**SALE OR LEASE**

**1765 SPRINGDALE ROAD C-1**

**CHERRY HILL, NJ**

**EXCLUSIVE LISTING**



**BRIGHT RECEPTION AREA**



**WELL APPOINTED HALLWAY**



**BRIGHT COMMON AREA**



**MODERN FIXTURES**



**UPGRADED FLOORS THROUGHOUT**



**LUSH COURTYARD**

651 Route 73 North, Suite 111 • Marlton, NJ 08053 • Phone: (856) 985-9522 • Fax: (856) 985-9488

[www.rosecommercial.com](http://www.rosecommercial.com)



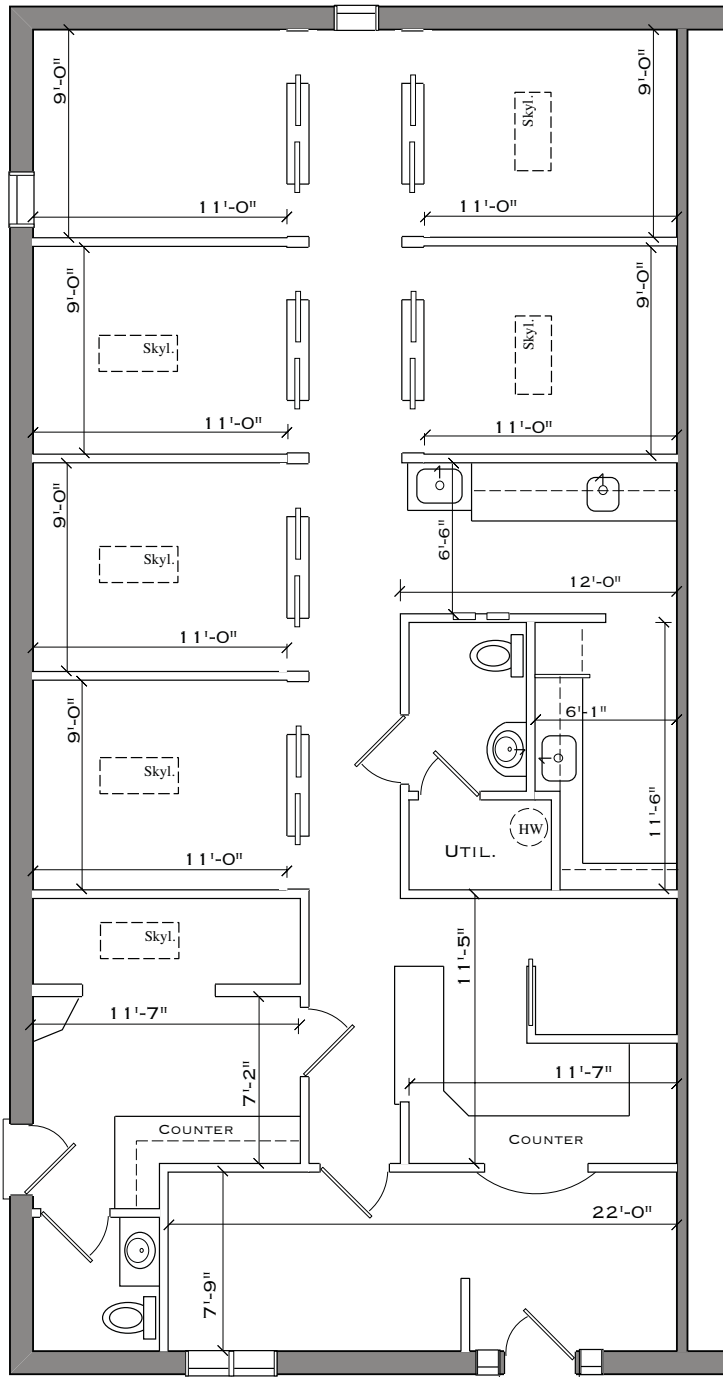


# MEDICAL OFFICE CONDO SALE OR LEASE

## 1765 SPRINGDALE ROAD C-1 CHERRY HILL, NJ

### EXCLUSIVE LISTING

### FLOOR PLAN 1,720 +/- SF



ALL INFORMATION FURNISHED REGARDING PROPERTY FOR SALE, RENTAL OR FINANCING IS FROM SOURCES DEEMED RELIABLE, BUT NO WARRANTY OR REPRESENTATION IS MADE AS TO THE ACCURACY THEREOF AND SAME IS SUBMITTED SUBJECT TO ERRORS, OMISSIONS, CHANGE OF PRICE, RENTAL OR OTHER CONDITIONS, PRIOR SALE, LEASE OR FINANCING OR WITHDRAWAL WITHOUT NOTICE. NO LIABILITY OF ANY KIND IS TO BE IMPOSED ON THE BROKER HEREIN.

651 Route 73 North, Suite 111 • Marlton, NJ 08053 • Phone: (856) 985-9522 • Fax: (856) 985-9488