

For Lease

# Puget Square Business Park

12811 - 8th Avenue W, Everett, WA



## Puget Square Business Park

12811 - 8th Avenue W, Everett, WA

- Generous improvement allowance available for qualified tenants
- Accommodates medical office, retail & traditional office
- Location on I-5 corridor
- Signage opportunity on 128th St SW (20,000 traffic count)
- Neighbor amenities include Starbucks, McDonalds & Albertsons
- Rate: \$12.00 PSF, NNN (NNN = \$5.35)

For more information, contact:

**Talor Okada**  
+1 425 586 5605  
tokada@nai-psp.com

**Darrell Okada**  
+1 425 586 5623  
dokada@nai-psp.com

**John Rochford**  
+1 425 586 5612  
jrochford@nai-psp.com

**Richie Sander**  
+1 425 586 5609  
rsander@nai-psp.com

### Availability Summary

#### Building A

- 1st Floor: 822 - 4,000 SF

#### Building B

- 1st Floor: 1,437 - 1,685 SF
- 2nd Floor: 686 SF

#### Building C

- No Vacancy

#### Building D

- 1st Floor: 1,123 - 1,984 SF

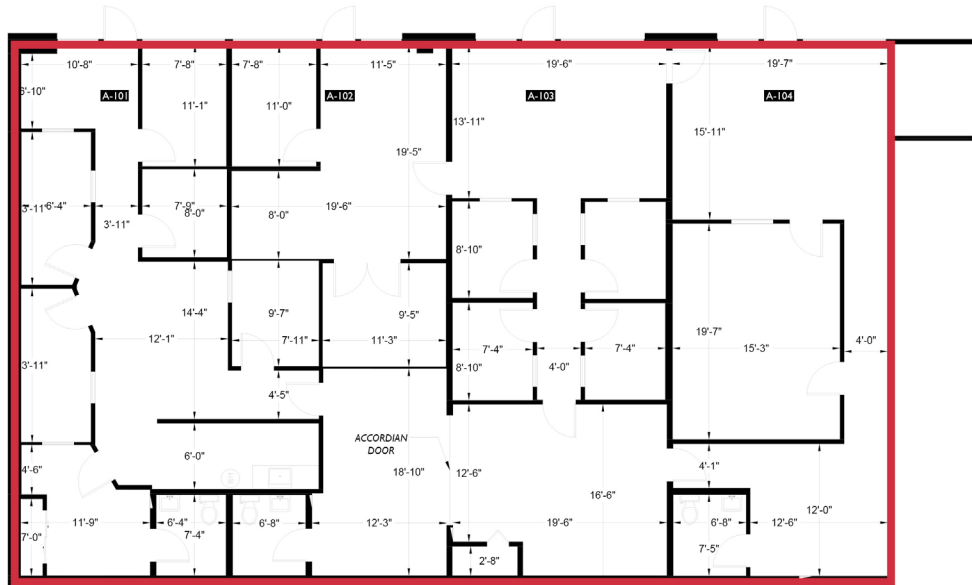
#### Building E

- 1st Floor: 2,915 SF

## FLOOR PLAN - BLDG. A & B

## CURRENT AVAILABILITIES

### SUITE A101 - A104



### SUITE A101 - A104

Up to 4,000 SF contiguous on bottom floor

Divisible to 822 SF

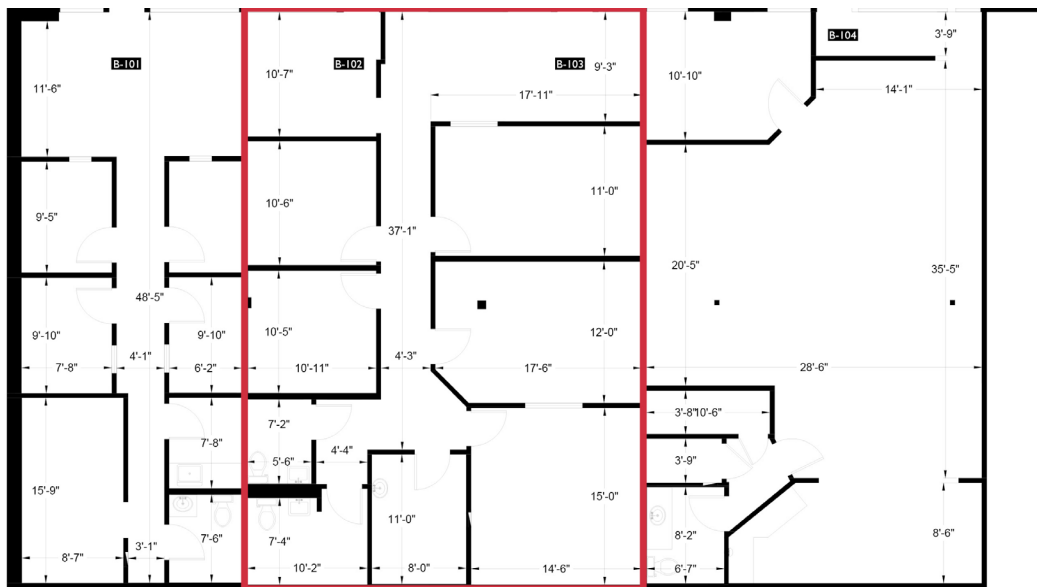
Finished office spaces, reception areas, private restrooms

**MONTHLY BASE RENT \$ 4,000.00**

**NNN \$ 1,783.00**

**TOTAL \$ 5,783.00**

### SUITE B102 - B103



### SUITE B102 - B103

1,685 SF total

7 private offices

Open reception and private restrooms

**MONTHLY BASE RENT \$ 1,685.00**

**NNN \$ 751.00**

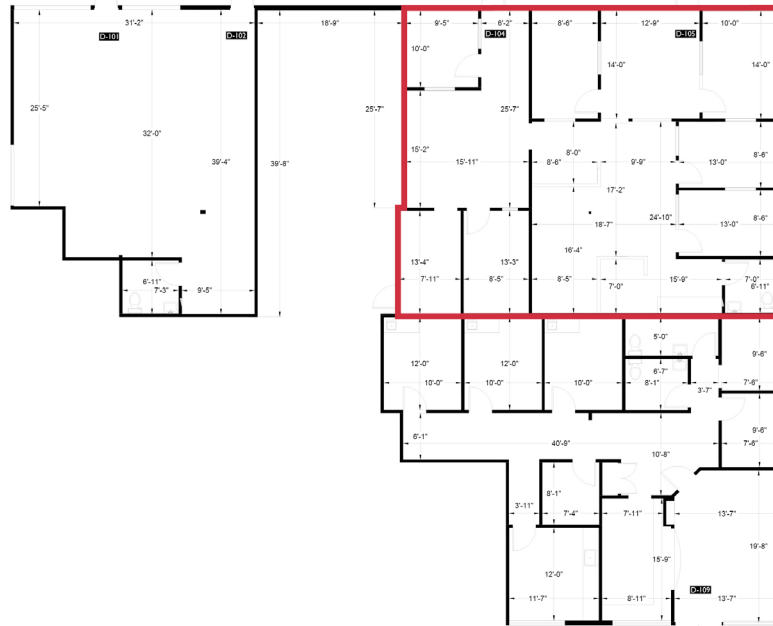
**TOTAL \$ 2,436.00**



# FLOOR PLAN - BLDG. D

## CURRENT AVAILABILITIES

**SUITE D104- D105**



**SUITE D109**



**SUITE D104 - D105**

---

Up to 1,984 SF available

Open office configuration, ample storage area, efficient lighting, and private restroom

---

**MONTHLY BASE RENT \$ 1,984.00**

---

**NNN \$ 884.00**

---

**TOTAL \$ 2,868.00**

**SUITE D109**

---

1,725 SF total

Open reception area, 4 private offices built out with plumbing, 2 private restrooms

Space is ideal for medical and dental uses

---

**MONTHLY BASE RENT \$ 1,725.00**

---

**NNN \$ 769.00**

---

**TOTAL \$ 2,494.00**

# FLOOR PLAN - BLDG. E

# CURRENT AVAILABILITIES

**SUITE E101**



## SUITE E101

2,915 SF Available

Open retail space with high visibility from 128th St

Ample parking in front of the suite, attractive storefront

Open space with 2 restrooms and one storage room

**MONTHLY BASE RENT \$ 2,915.00**

**NNN \$ 1,299.00**

**TOTAL \$ 4,214.00**



