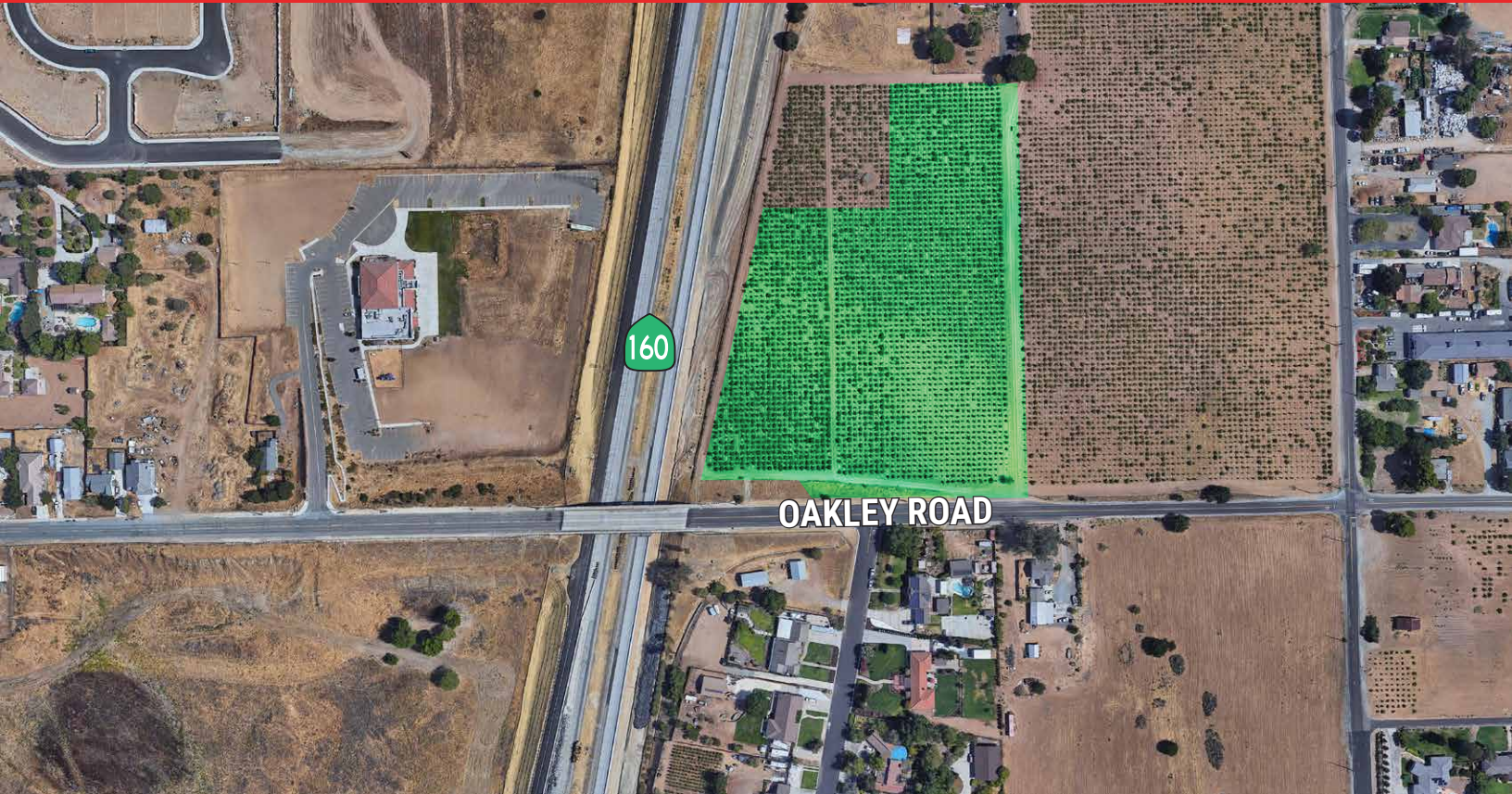


Land For Sale

Oakley Road & CA-160

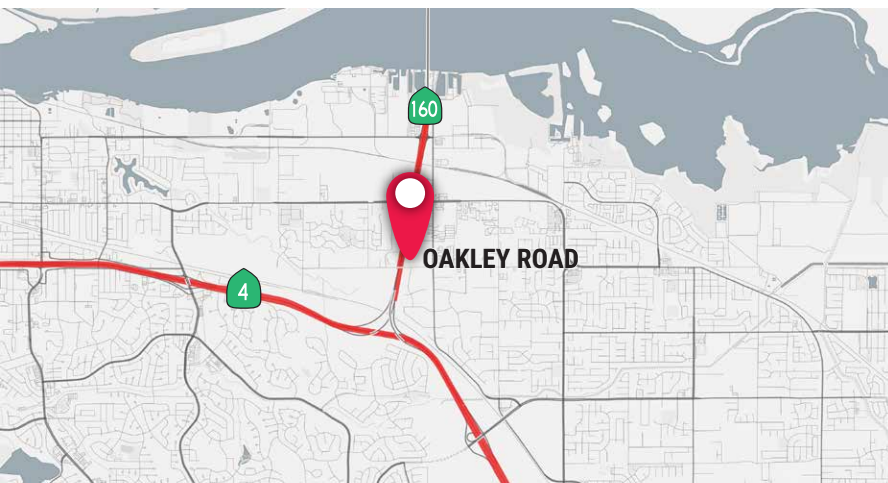
Oakley, CA

\$3,800,000



±8.78 Acres (±382,283 Square Feet)

We are pleased to offer the following parcel of land for sale:



PROPERTY HIGHLIGHTS

- ◆ APN #051-210-022-3
- ◆ Zoned General Commercial
- ◆ Variety of uses permitted including mixed-use (with CUP)
- ◆ Located directly off state route 160 with outstanding freeway visibility
- ◆ Topography: Flat
- ◆ Currently receiving income from vineyards
- ◆ Call Brokers for additional information

Forrest Gherlone Senior Managing Director 925.974.0237 fgherlone@ngkf.com CA RE License #01376723

Kris Hagar Associate 925.974.0119 khagar@ngkf.com CA RE License #02009499



1333 N. California Blvd, Ste 343 | Walnut Creek, CA 94596

www.ngkf.com

Land For Sale

Oakley Road & CA-160

Oakley, CA



**PLANNED
INDUSTRIAL DEVELOPMENT**
±2,200,000 SF



TRAFFIC COUNTS (2019 ADT)

Oakley Road 2,715 ADT
CA-160 12,288 ADT

Forrest Gherlone Senior Managing Director 925.974.0237 fgherlone@ngkf.com CA RE License #01376723

Kris Hagar Associate 925.974.0119 khagar@ngkf.com CA RE License #02009499



1333 N. California Blvd, Ste 343 | Walnut Creek, CA 94596

www.ngkf.com