



CORNER LOT FOR SALE | 1.83 ACRES

I-470 & Bowlin Rd (SEC) | Blue Springs Lake Entrance
5030 NE Lakewood Way, Lee's Summit, Missouri



SALE PRICE: \$1,197,597.45 OR \$15.00/SF

DEMOGRAPHICS

	1 mile	3 miles	5 miles
Estimated Population	4,983	31,310	108,223
Avg. Household Income	\$143,178	\$98,113	\$87,228

- Great visibility
- 79,839 square foot lot
- Located at the park entrance to Blue Springs Lake, Campground, and Marina
- Close to Summit Grill & Bar
- Across from Conoco, ReeceNichols, Lakewood
- Montessori School, and Delta School



CLICK HERE TO VIEW MORE LISTING INFORMATION

For More Information Contact:

WILLIAM GLASGOW | 816.412.7394 | wglasgow@blockandco.com

Exclusive Agent

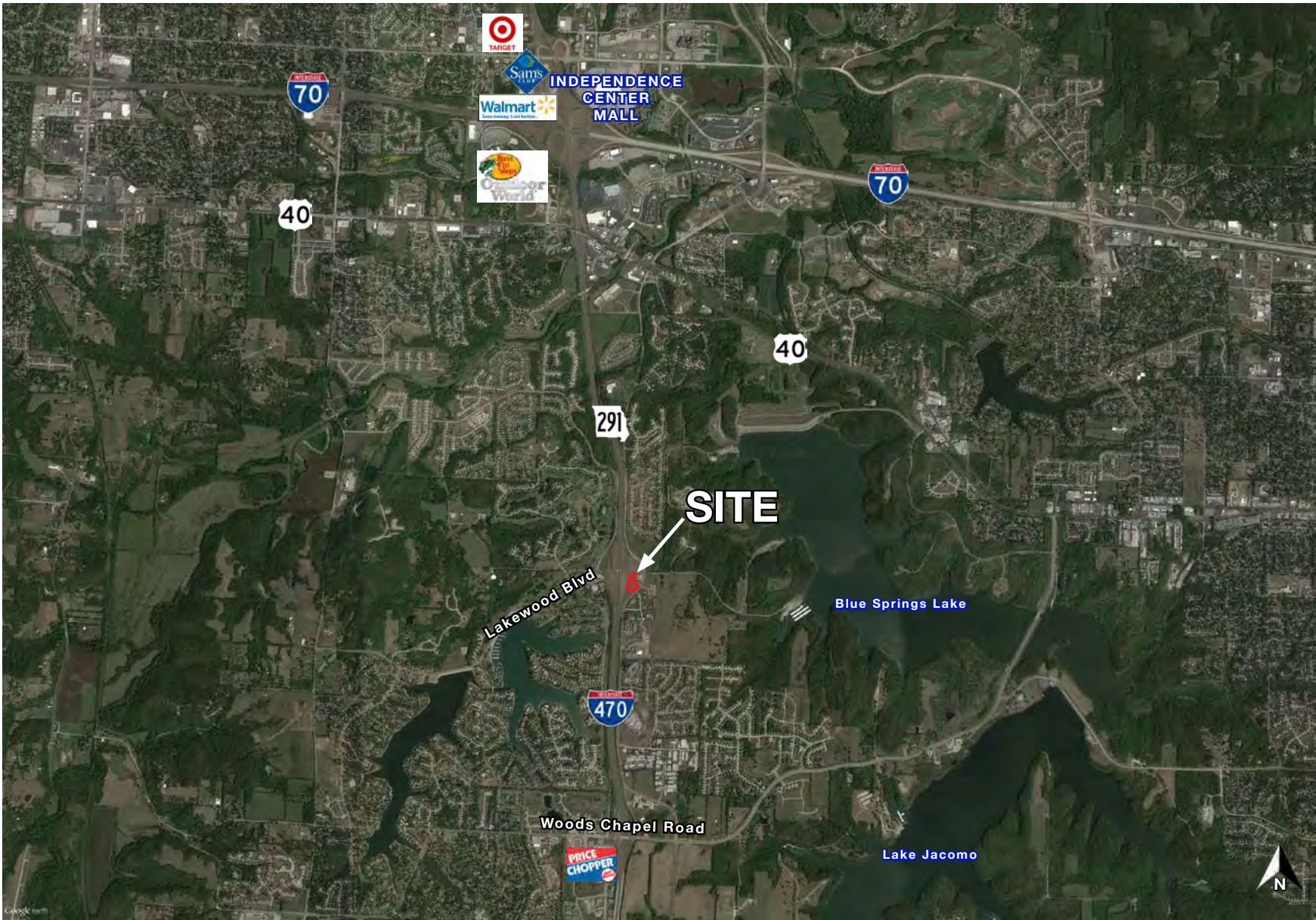




CORNER LOT FOR SALE | 1.83 ACRES

I-470 & Bowlin Rd (SEC) | Blue Springs Lake Entrance
5030 NE Lakewood Way, Lee's Summit, Missouri

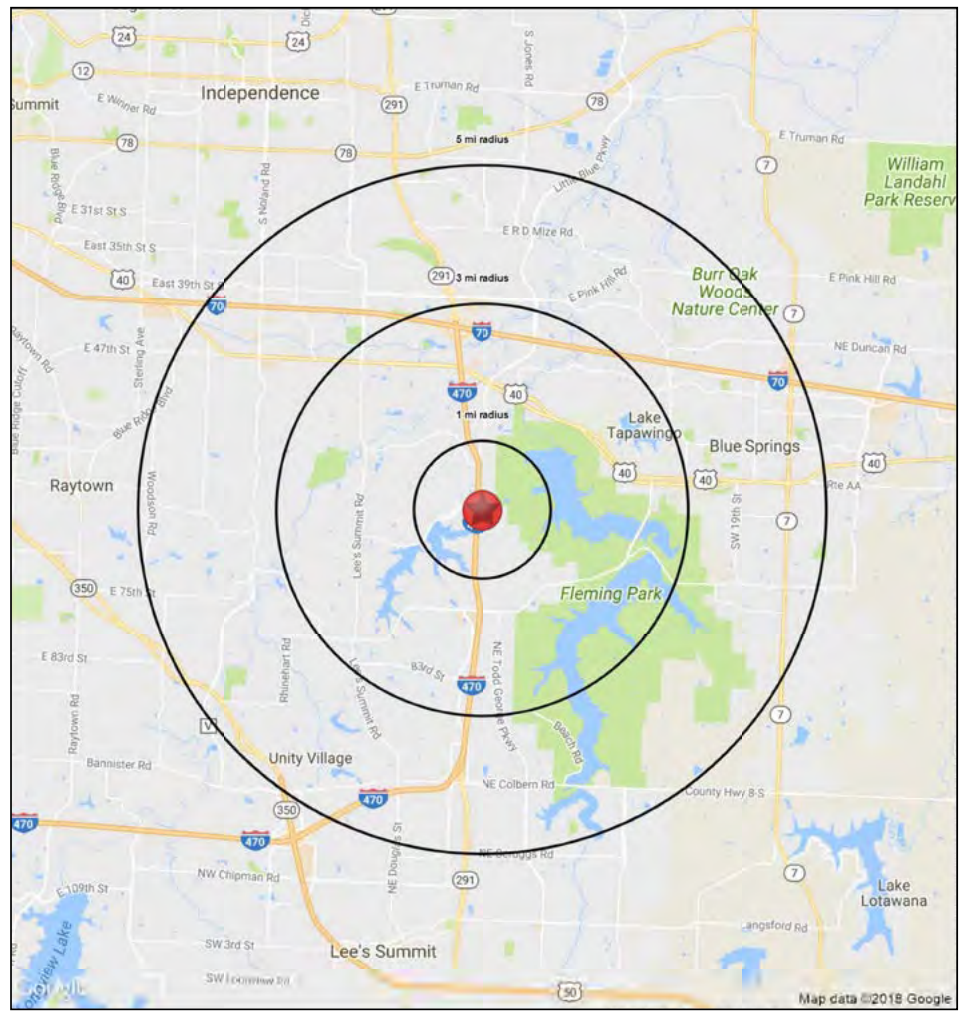
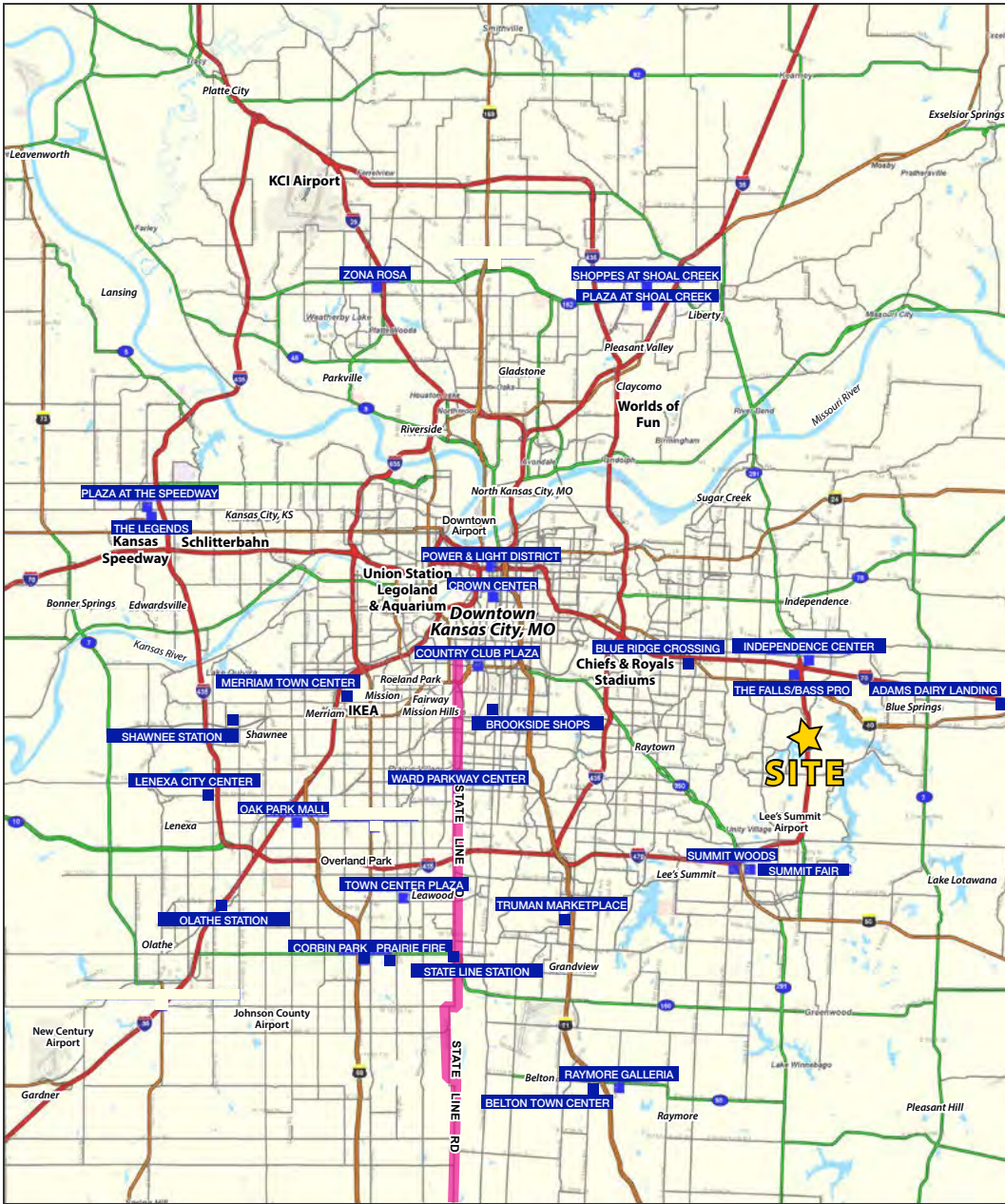
AERIAL





CORNER LOT FOR SALE | 1.83 ACRES

I-470 & Bowlin Rd (SEC) | Blue Springs Lake Entrance
5030 NE Lakewood Way, Lee's Summit, Missouri



Block & Company, Inc., Realtors | 605 W. 47th Street, Ste. 200, Kansas City, MO 64112 | 816.753.6000 | www.blockandco.com



All information furnished regarding property for sale or lease is from sources deemed reliable, but no warranty or representation is made as to the accuracy thereof and the same is subject to errors, omissions, changes of prices, rental or other conditions, prior sale or lease or withdrawal without notice.



CORNER LOT FOR SALE | 1.83 ACRES

I-470 & Bowlin Rd (SEC) | Blue Springs Lake Entrance
5030 NE Lakewood Way, Lee's Summit, Missouri

5030 NE Lakewood Way		1 mi radius	3 mi radius	5 mi radius
Lee's Summit, MO 64064				
POPULATION	2018 Estimated Population	4,983	31,310	108,223
	2023 Projected Population	5,175	32,298	111,307
	2010 Census Population	4,664	29,408	105,067
	2000 Census Population	2,917	22,753	93,897
	Projected Annual Growth 2018 to 2023	0.8%	0.6%	0.6%
	Historical Annual Growth 2000 to 2018	3.9%	2.1%	0.8%
	2018 Median Age	40	40.9	40
HOUSEHOLDS	2018 Estimated Households	1,935	12,963	45,035
	2023 Projected Households	1,988	13,221	45,753
	2010 Census Households	1,732	11,619	41,762
	2000 Census Households	1,043	8,562	36,098
	Projected Annual Growth 2018 to 2023	0.6%	0.4%	0.3%
	Historical Annual Growth 2000 to 2018	4.8%	2.9%	1.4%
RACE AND ETHNICITY	2018 Estimated White	86.0%	83.9%	83.6%
	2018 Estimated Black or African American	6.2%	9.1%	8.9%
	2018 Estimated Asian or Pacific Islander	5.0%	2.8%	2.2%
	2018 Estimated American Indian or Native Alaskan	0.1%	0.3%	0.4%
	2018 Estimated Other Races	2.6%	3.9%	4.8%
	2018 Estimated Hispanic	2.9%	4.4%	5.6%
INCOME	2018 Estimated Average Household Income	\$143,178	\$98,113	\$87,228
	2018 Estimated Median Household Income	\$116,734	\$83,842	\$71,849
	2018 Estimated Per Capita Income	\$55,593	\$40,693	\$36,350
EDUCATION (AGE 25+)	2018 Estimated Elementary (Grade Level 0 to 8)	0.7%	1.0%	1.5%
	2018 Estimated Some High School (Grade Level 9 to 11)	1.1%	2.9%	4.2%
	2018 Estimated High School Graduate	15.7%	21.7%	26.3%
	2018 Estimated Some College	19.1%	23.9%	25.1%
	2018 Estimated Associates Degree Only	8.4%	8.1%	8.1%
	2018 Estimated Bachelors Degree Only	32.8%	24.3%	22.0%
	2018 Estimated Graduate Degree	22.3%	18.1%	12.8%
BUSINESS	2018 Estimated Total Businesses	249	1,343	4,759
	2018 Estimated Total Employees	2,736	15,857	53,513
	2018 Estimated Employee Population per Business	11.0	11.8	11.2
	2018 Estimated Residential Population per Business	20.0	23.3	22.7

