

PRIME WESTWOOD RETAIL SPACE FOR LEASE



1071 GAYLEY AVE
LOS ANGELES, CA 90024



COMMERCIAL
ASSET GROUP

The image shows the interior of a commercial space, likely a bike shop or repair area. The walls are made of red brick, and there are several long metal shelving units mounted against them. The ceiling has exposed pipes and fluorescent lighting. A large glass door on the left provides a view of the street outside, where a blue car and a white car are visible. A blue overlay in the top left corner contains text about the space's size, rental rate, and availability.

SPACE SIZE

±2,110 SQFT

RENTAL RATE

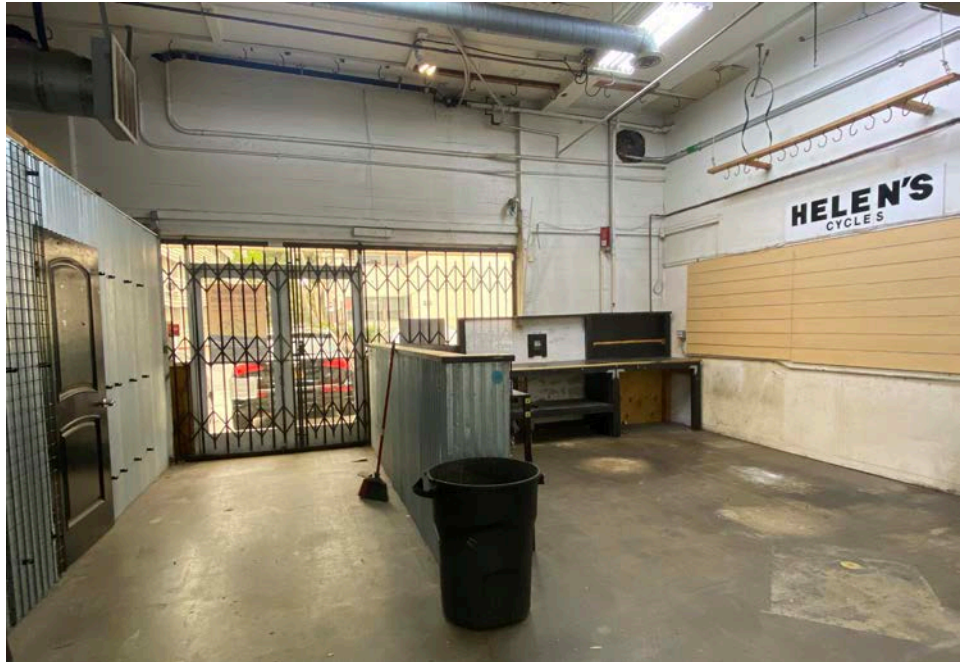
\$7,500, MG

AVAILABILITY

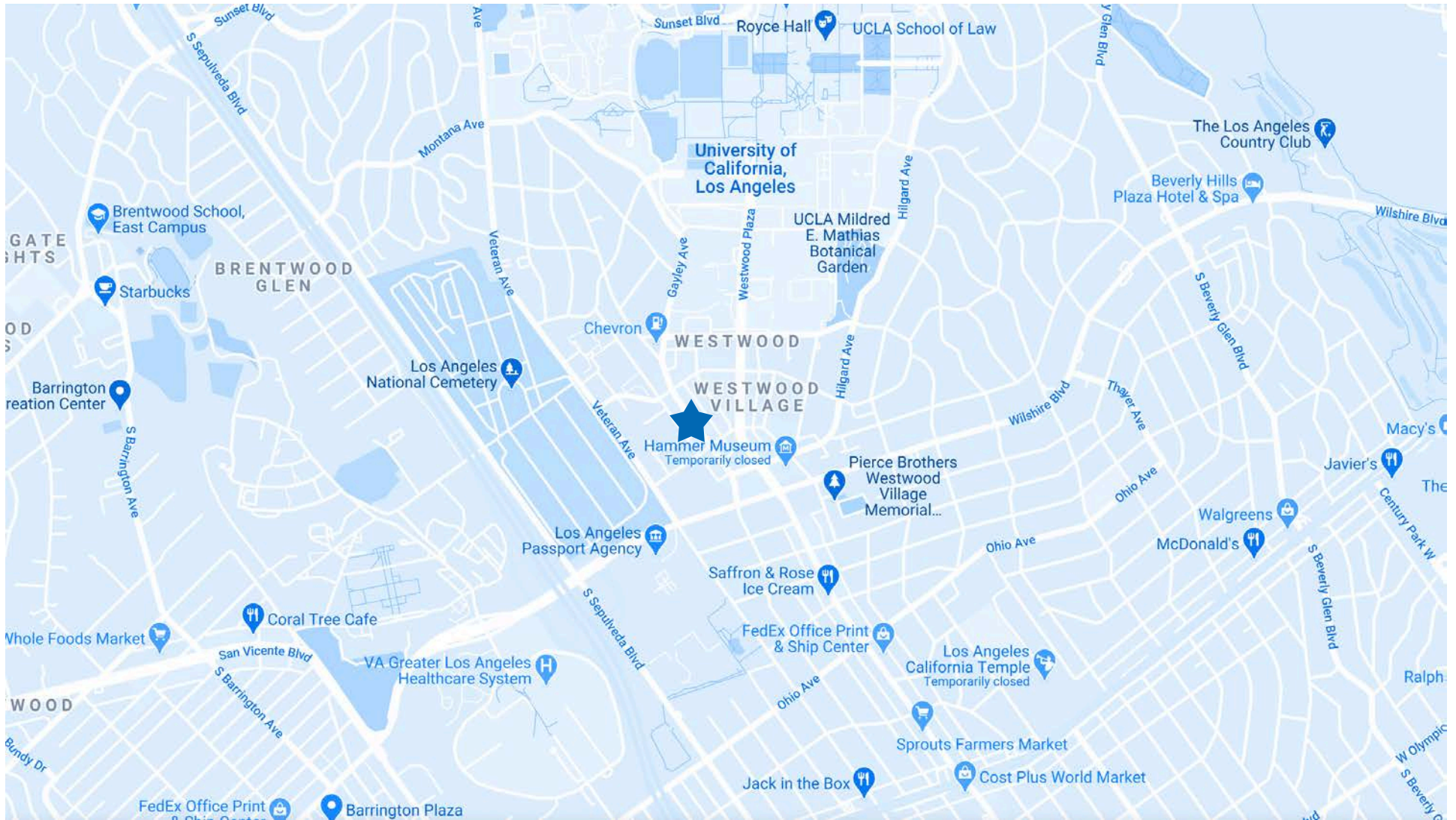
IMMEDIATELY

- PRIME WESTWOOD VILLAGE LOCATION
- HIGH CEILINGS/EXCELLENT FRONTAGE
- ICONIC BICYCLE LOCATION
- SITUATED AMONGST AN ENORMOUS STUDENT POPULATION, MILLIONS OF SQUARE FEET OF OFFICE, MAJOR HOSPITAL & MULTI-MILLION DOLLAR HOMES

These materials are based on information and content provided by others, which we believe are accurate. No guarantee, warranty or representation is made by Commercial Asset Group, Inc. or its personnel. All interested parties must independently verify accuracy and completeness. As well, any projections, assumptions, opinion, or estimates are used for example only and do not represent the current or future performance of the identified property. Your tax, financial, legal and toxic substance advisors should conduct a careful investigation of the property and its suitability for your needs, including land use limitations. The property is subject to prior lease, sale, change in price, or withdrawal from the market without notice.



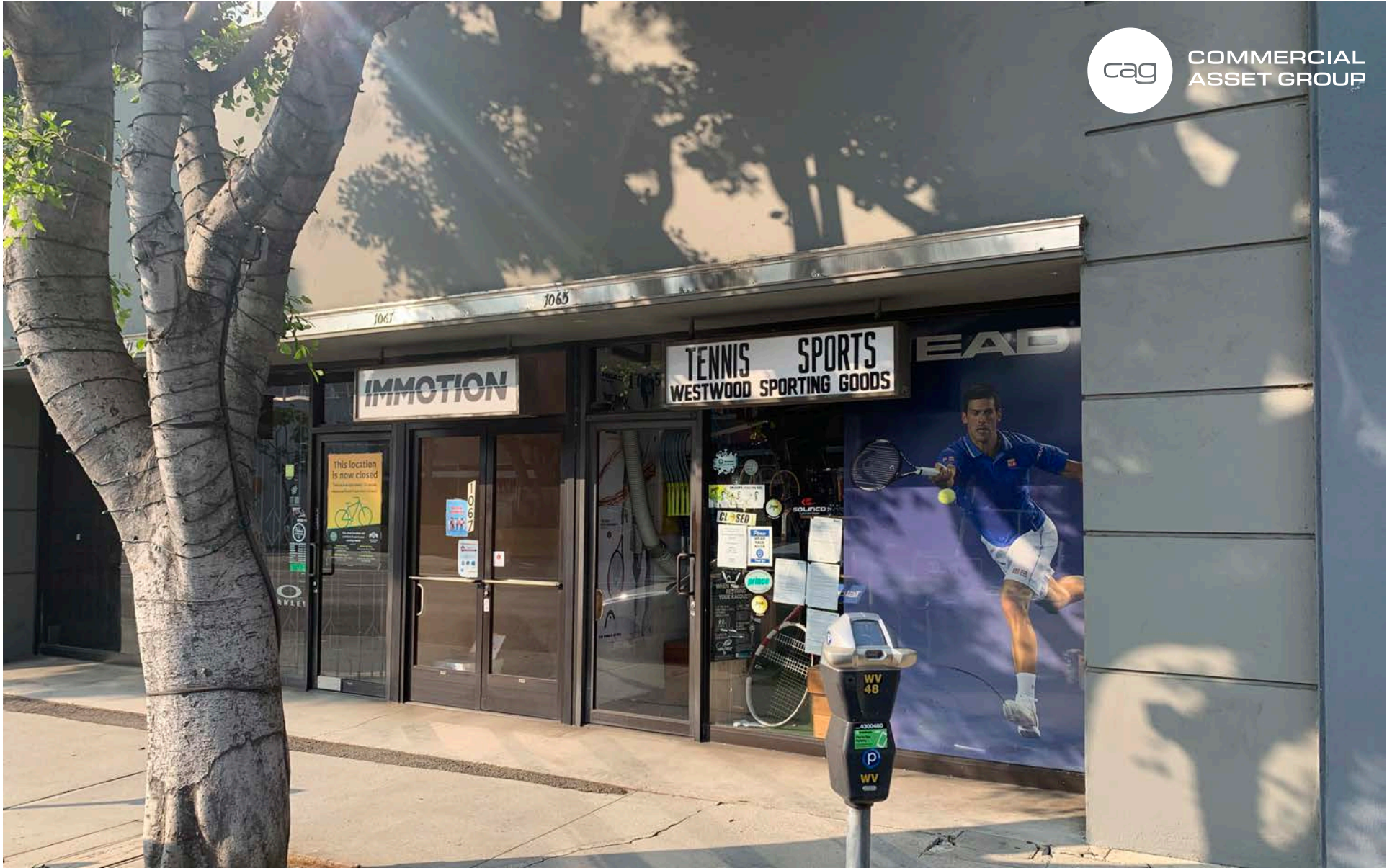
SPACE PHOTOS



MAP



AERIAL



COMMERCIAL
ASSET GROUP

DAVID ASCHKENASY
EXECUTIVE VICE PRESIDENT
P 310.272.7381
E DAVIDA@CAG-RE.COM
LIC. 01714442

JEREMY WINTNER
DIRECTOR
P 310.272.7390
E JEREMY@CAG-RE.COM
LIC. 02062054

COMMERCIAL ASSET GROUP
1801 CENTURY PARK EAST, STE 1550
LOS ANGELES, CA 90067
P 310.275.8222 F 818.385.1470
WWW.CAG-RE.COM LIC. 01876070