

COLLINS BUSINESS PARK



FOR LEASE 3929 Calle Fortunada Suite A

3821, 3853, & 3929 Calle Fortunada & 3878 & 3940 Ruffin Road | San Diego, CA

COLLINS BUSINESS PARK is one of the highest quality R&D parks in Central San Diego County. Conveniently located on the I-15 corridor of Kearny Mesa, the project offers unsurpassed freeway access along with a corporate identity. Some of the features include:

- Approximately 5,795 SF
- 30% Improved (Perimeter Offices & Bullpen)
- Efficient Single Story Design
- Corporate Neighbors, Retail, and Amenities Nearby
- Quality Image
- Outstanding Freeway Access
- Column Spacing: 48'x24'
- Convenient Public Transportation
- Major Fiber Corridor (XO, Verizon, CenturyLink, AT&T)
- Separately metered 277/480 3-Phase Power
- Two (2) 10'x10' Grade Level Doors
- Multiple Internet Providers Available
- 4% Fee to Outside Agent
- Lease Rate - \$1.55 NNN PSF/Mo

RANDY LACHANCE, SIOR, Senior Vice President

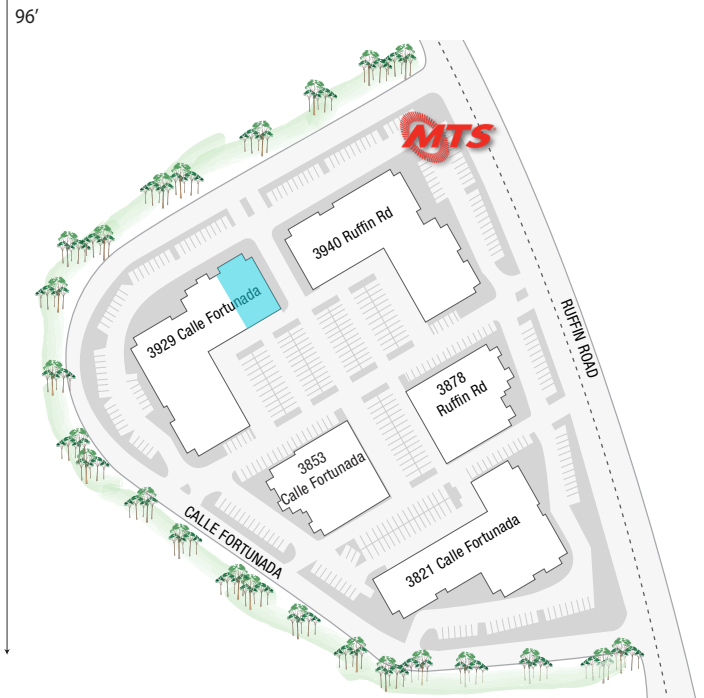
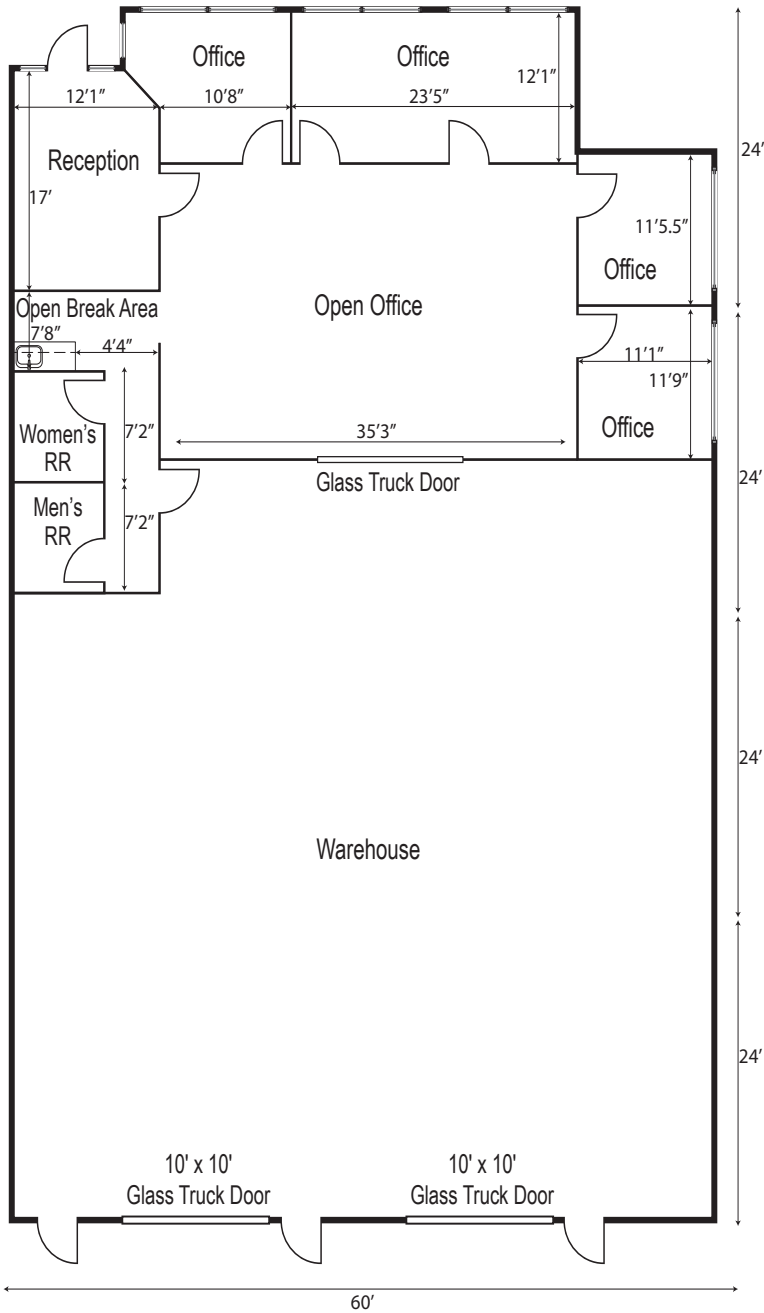
RYAN BRACKER, Vice President

4180 La Jolla Village Drive, Suite 100, La Jolla, CA 92037 | 858.453.0505 | Lic #01991785 | www.voitco.com

Voit
REAL ESTATE SERVICES

COLLINS BUSINESS PARK

3929 Calle Fortunada
Suite A



RANDY LACHANCE, SIOR, Senior Vice President

RYAN BRACKER, Vice President

4180 La Jolla Village Drive, Suite 100, La Jolla, CA 92037 | 858.453.0505 | Lic #01991785 | www.voitco.com

Voit
REAL ESTATE SERVICES

COLLINS BUSINESS PARK

3929 Calle Fortunada
Suite A



COLLINS BUSINESS PARK

# of Buildings:	5
Total Project Size:	119,345 SF
Zoning:	IL-2-1 Light Industrial
Parking Ratio:	3.5/1,000

RANDY LACHANCE, SIOR, Senior Vice President

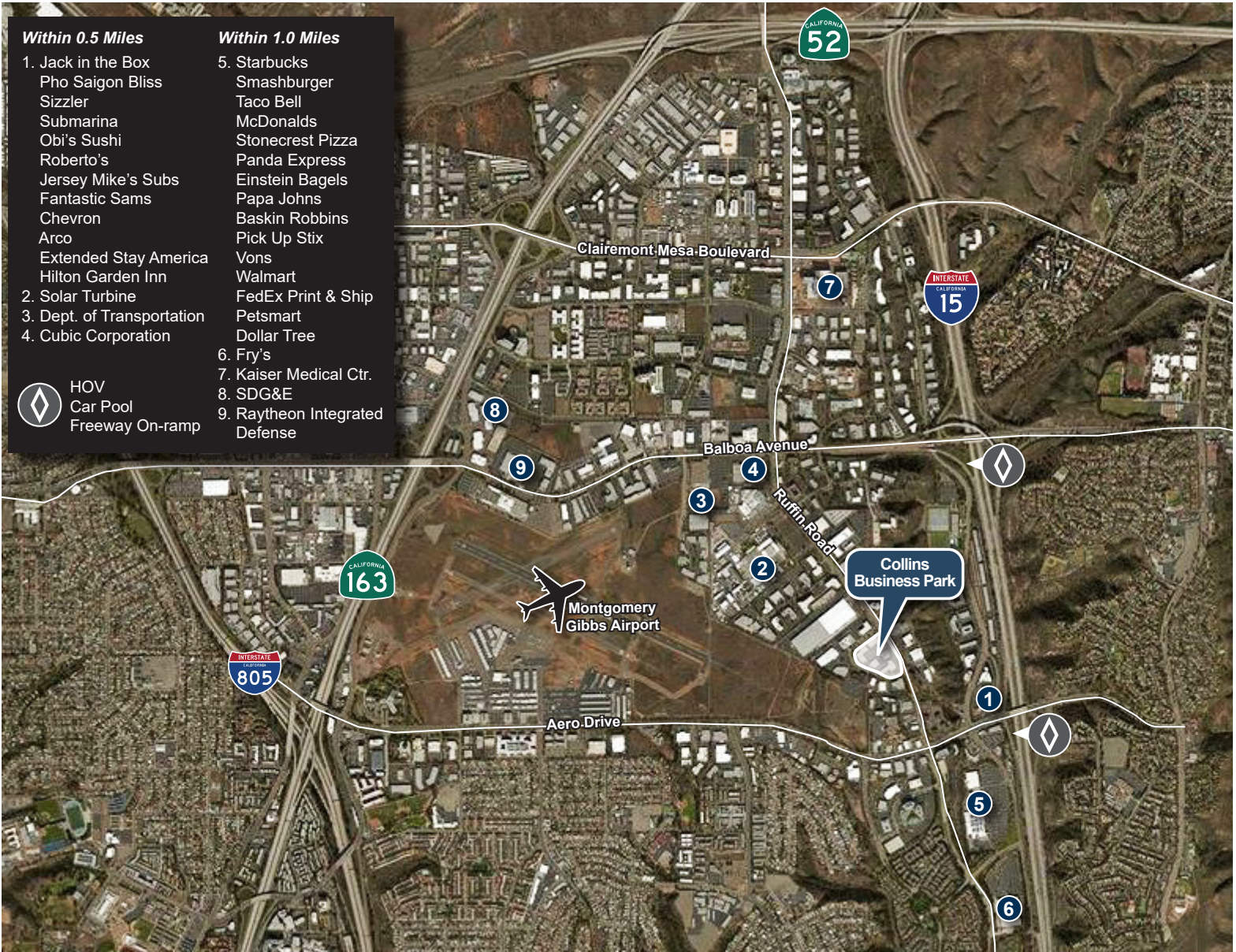
RYAN BRACKER, Vice President

4180 La Jolla Village Drive, Suite 100, La Jolla, CA 92037 | 858.453.0505 | Lic #01991785 | www.voitco.com

Voit
REAL ESTATE SERVICES

COLLINS BUSINESS PARK

3929 Calle Fortunada
Suite A



RANDY LACHANCE, SIOR, Senior Vice President
858.458.3374
rlachance@voitco.com
License: 00969674

RYAN BRACKER, Vice President
858.458.3355
rbracker@voitco.com
License: 01353870